

INSTALLATION INSTRUCTIONS

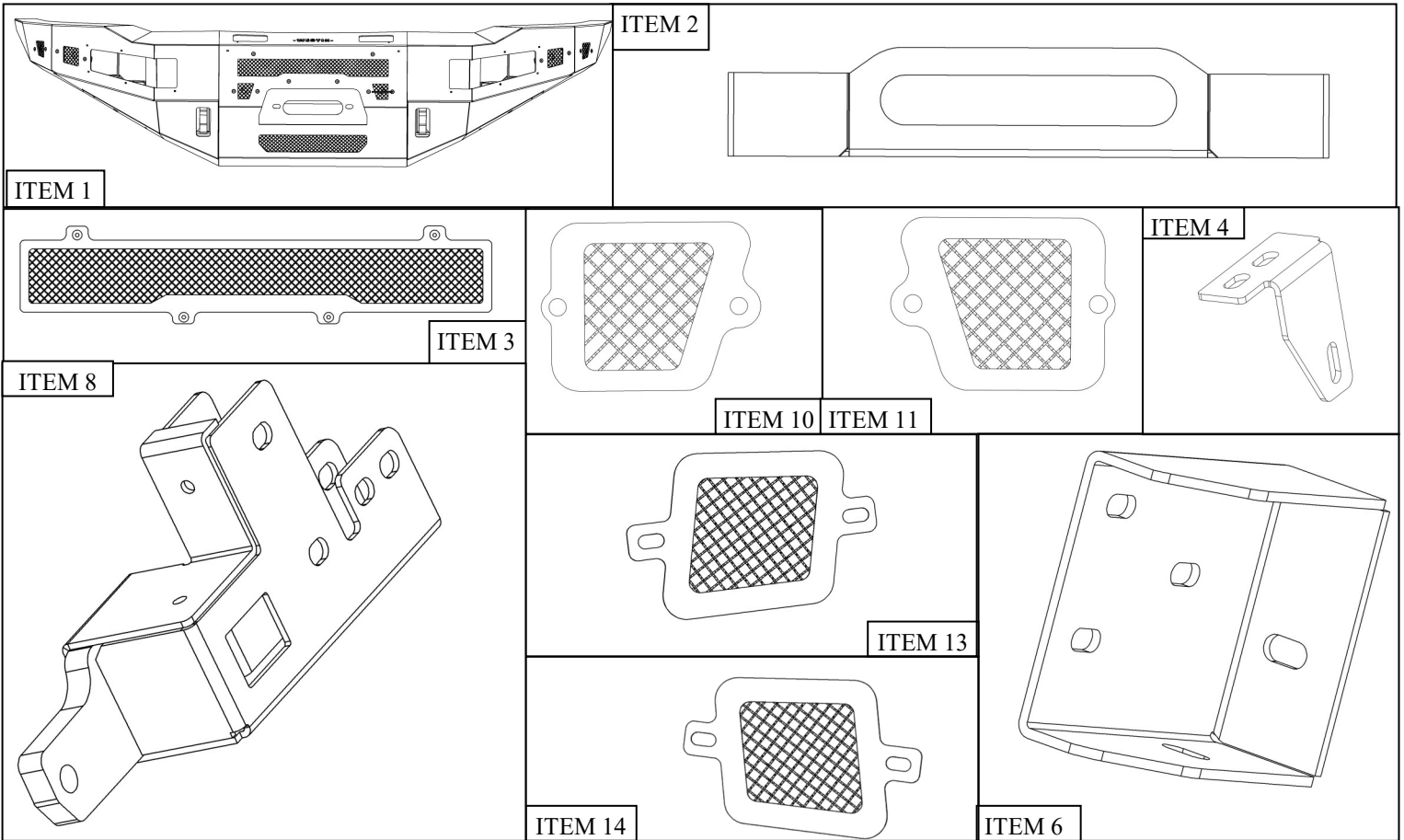
PRO-SERIES FRONT BUMPER



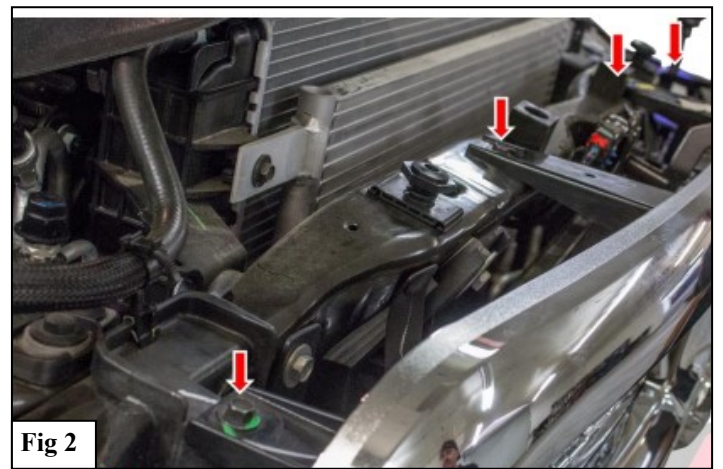
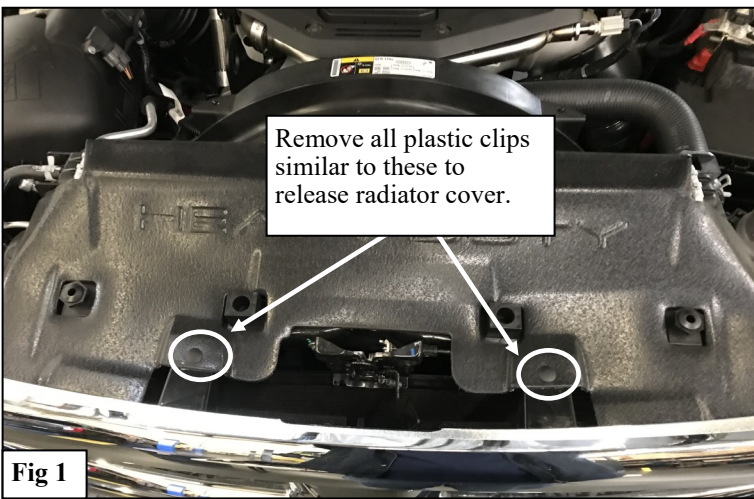
APPLICATION:
2010–2018 Dodge Ram 2500/3500
PART NUMBER:
58-411195

CONTENT			
TEM	QUANTITY	DESCRIPTION	TOOLS NEEDED
1	1	PRO-SERIES FRONT BUMPER	10MM SOCKET
2	1	WINCH TRAY	10MM WRENCH
3	1	LED COVER	17MM SOCKET
4	1	LED DRIVER BRACKET	17MM WRENCH
5	1	LED PASSENGER BRACKET	19MM SOCKET
6	1	BUMPER DRIVER BRACKET	19MM WRENCH
7	1	BUMPER PASSENGER BRACKET	RATCHET
8	1	TRAY DRIVER BRACKET	TORQUE WRENCH
9	1	TRAY PASSENGER BRACKET	TAPE MEASURE
10	2	SENSOR PLATE/ MESH PLATE A	ALLEN
11	2	SENSOR PLATE/ MESH PLATE B	
12	4	SENSOR WIRING HARNESS	
13	1	SENSOR PLATE / MESH COVER C	
14	1	SENSOR PLATE/ MESH COVER D	
15	4	M10 HEX BOLT	
16	4	M10 SERRATED FLANGE NUTS	
17	4	M10 FLAT WASHER	
18	6	M12 SERRATED FLANGE NUT	
19	14	M12 HEX BOLT	
20	8	M12 SPLIT LOCK WASHER	
21	14	M12 FLAT WASHER	
22	4	M6 HEX HEAD BOLT	
23	4	M6 FLAT WASHER	
24	20	M6 SERRATED FLANGE NUT	
25	16	M6 COUNTERSUNK BOLT	
26	6	SENSOR TAB	
ANTI-SEIZE LUBRICANT MUST BE USED ON ALL STAINLESS STEEL FASTENERS TO PREVENT THREAD DAMAGE AND GALLING			
PROCEDURE			
<p>1. Remove contents from box, verify if all parts listed are present and free from damage. Carefully read and understand all instructions before attempting installation. Failure to identify damage before installation could lead to a rejection of any claim.</p>			

27	6	M6 CARRIAGE BOLTS (BLACK)	
28	6	M6 SPLIT LOCK WASHER (BLACK)	
29	6	M6 HEX NUT (BLACK)	
30	6	M6 FLAT WASHER (BLACK)	



2. Unplug any wire connections to the OEM Bumper.
3. Open the hood and temporarily remove the top plastic cover between the radiator and the grille. See **Figure 1**.
4. Also remove the grille for easier access to top bumper bracket bolts by removing the 4 M6 bolts on the top of the radiator. See **Figure 2**. Remove the grill by carefully pulling on the grille near the attachment points. *Note: Using a pry tool to assist in releasing the clips may help.*



5. Release the clips attaching the lower splash guard to the back of the front bumper, (if equipped). Locate the factory bumper nuts attaching the outer bumper to the inner brackets and remove them. See **Figures 3 & 4**.
6. With assistance, remove the bumper assembly. Next, remove the (2) tow hooks. *Note: Tow hooks may not be re-used.*



Fig 3

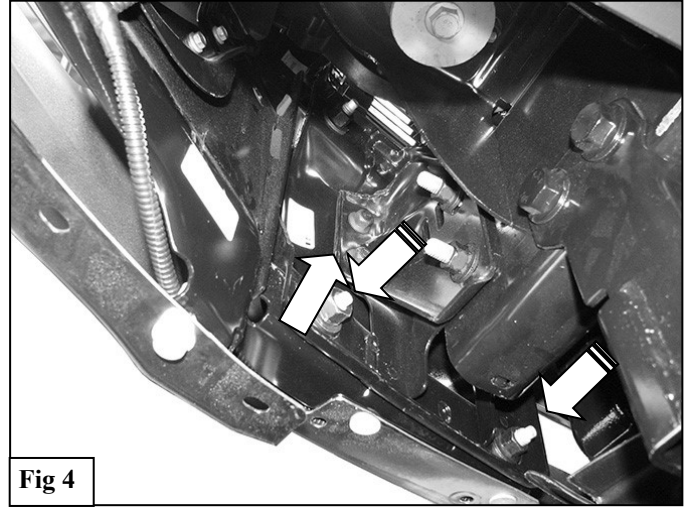


Fig 4

7. Remove the driver side inner bumper bracket and lower frame extension brackets from the ends of the frame. See **Figure 5**. **NOTE:** Lower frame extension brackets cannot be reinstalled. **IMPORTANT:** On models equipped with a diesel engine, the intercooler will need to be moved out of the way to remove the frame extension bracket. This is done by loosening the hose clamps & unbolting the intercooler brackets from the frame. Assistance is highly recommended to avoid damaging the intercooler.

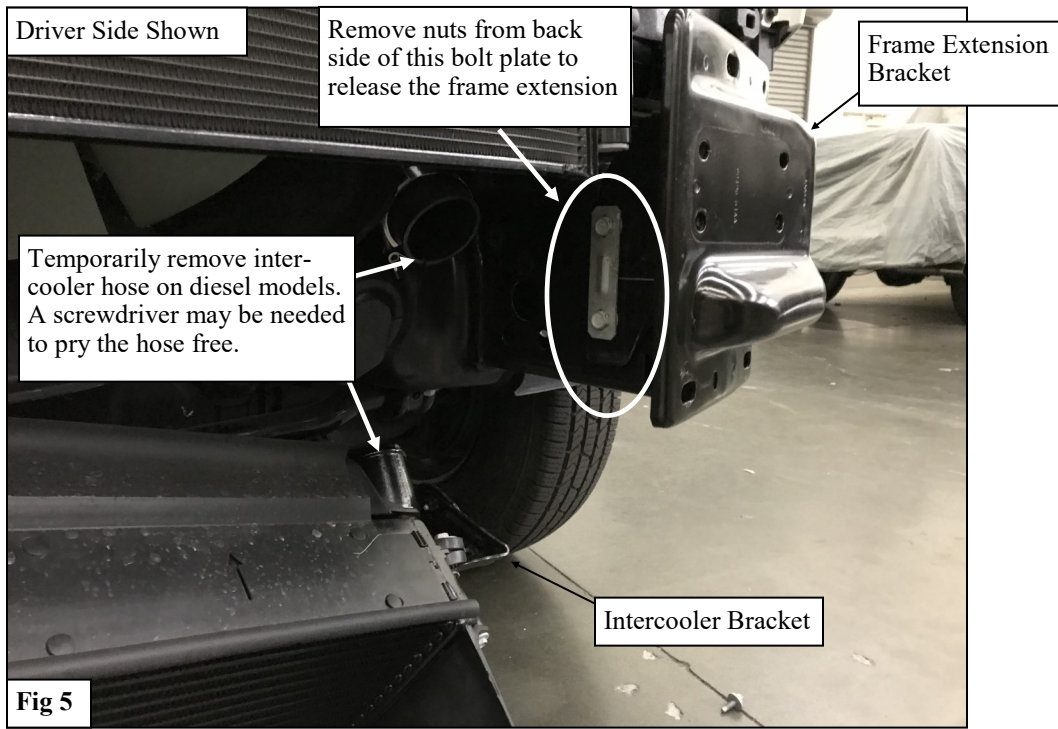
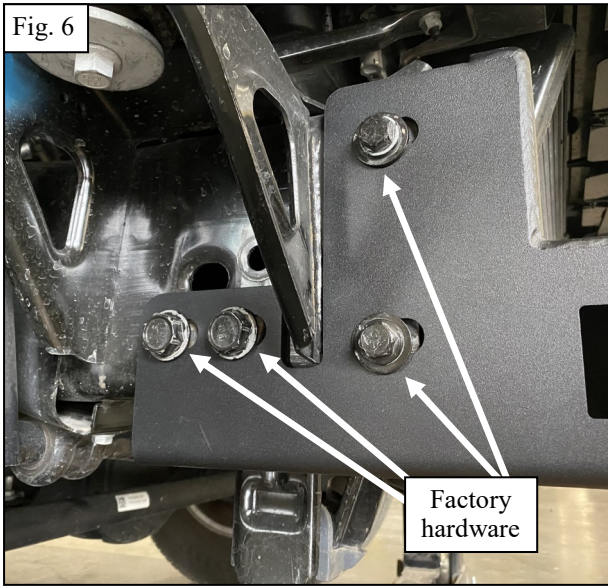
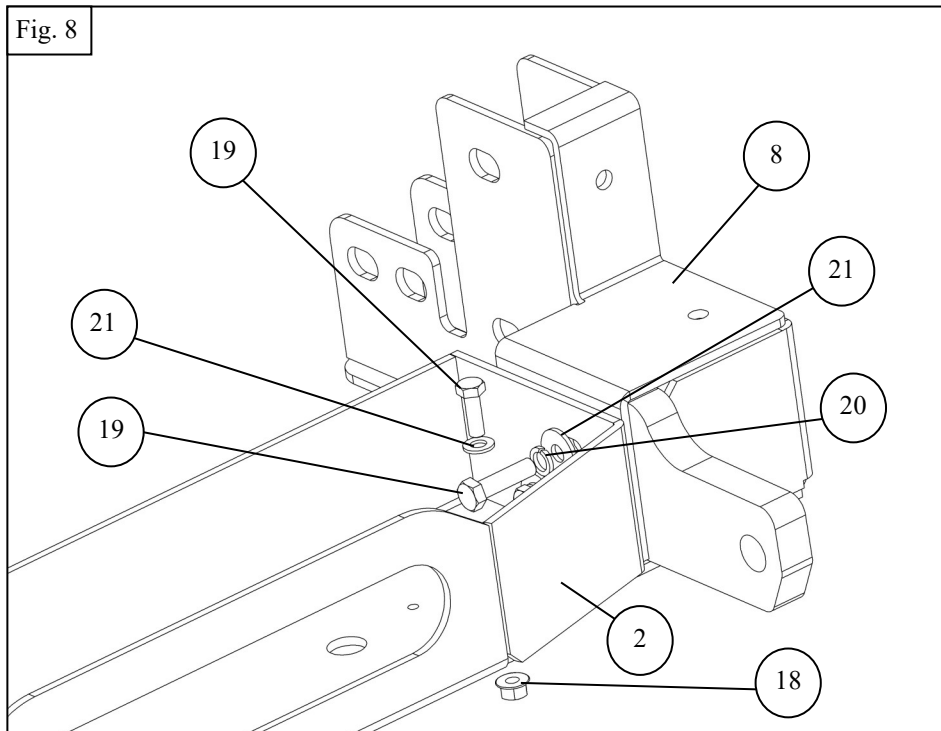


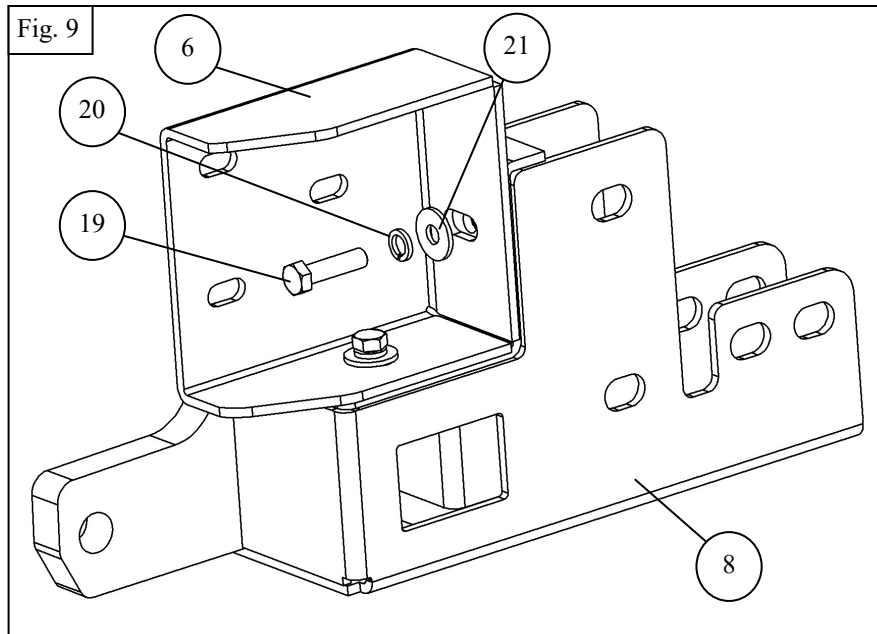
Fig 5

8. Locate the tray brackets. Re-using Factory hardware, loosely install the tray brackets to the frame. See Figures 6-7



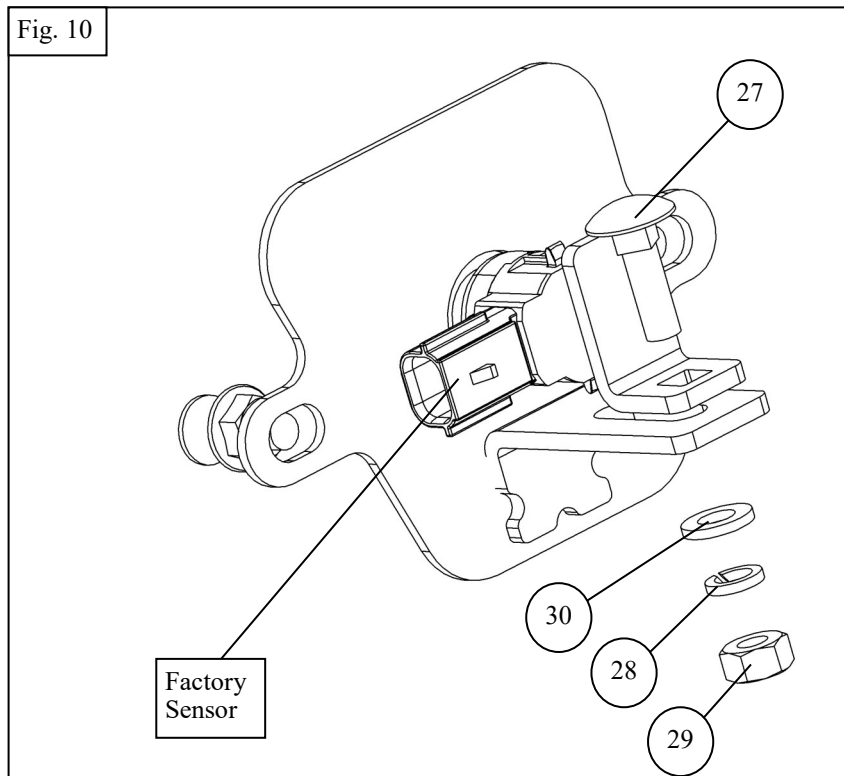
9. Using supplied M12 hardware, loosely assemble the winch tray to the tray brackets. See Figure 8
10. Using supplied M12 hardware, loosely assemble the main mounting brackets to the winch tray brackets. See Figure 9
11. Mount your Winch at this time following manufacturer's instructions.

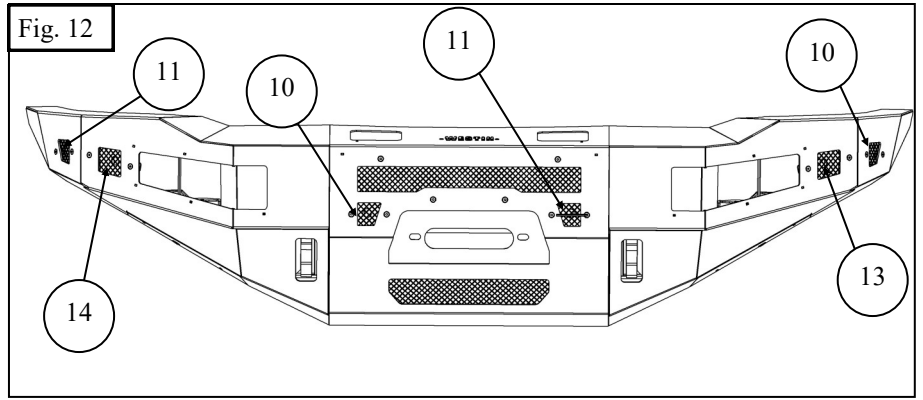
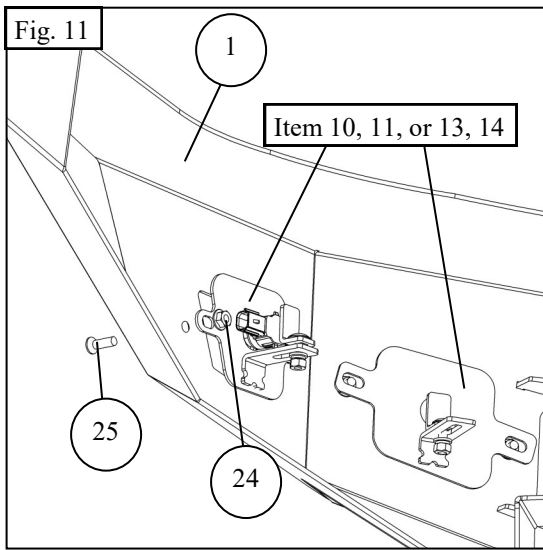




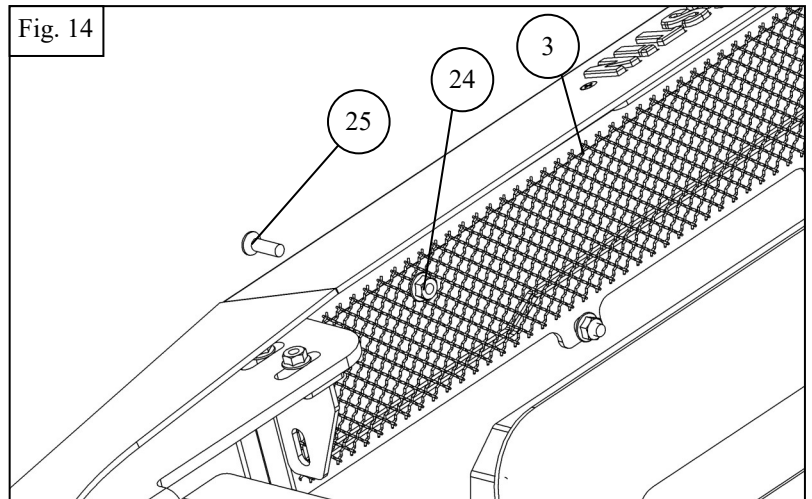
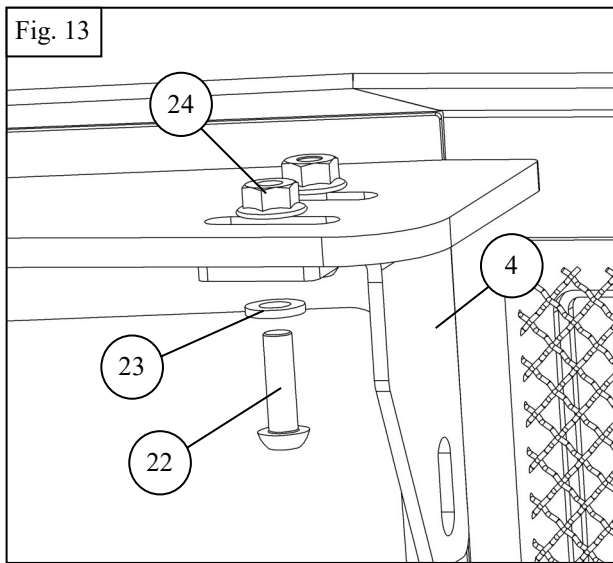
PARKING SENSOR INSTALLATION

12. If using sensors, install the optional sensor plates where the corner mesh covers are. (M6 hardware)
13. Remove the sensors and retainers from the stock bumper. Using the provided wire extension harness, install the factory sensor retainer into each of the sensor plates **from the front**. **Note: Ensure to install sensors in the same orientation you removed them. See Figure 10-12**
14. Use the Sensor Tab (26) along with the supplied M6 Hardware (27-30) to install the sensors as shown in **Figure 10**.

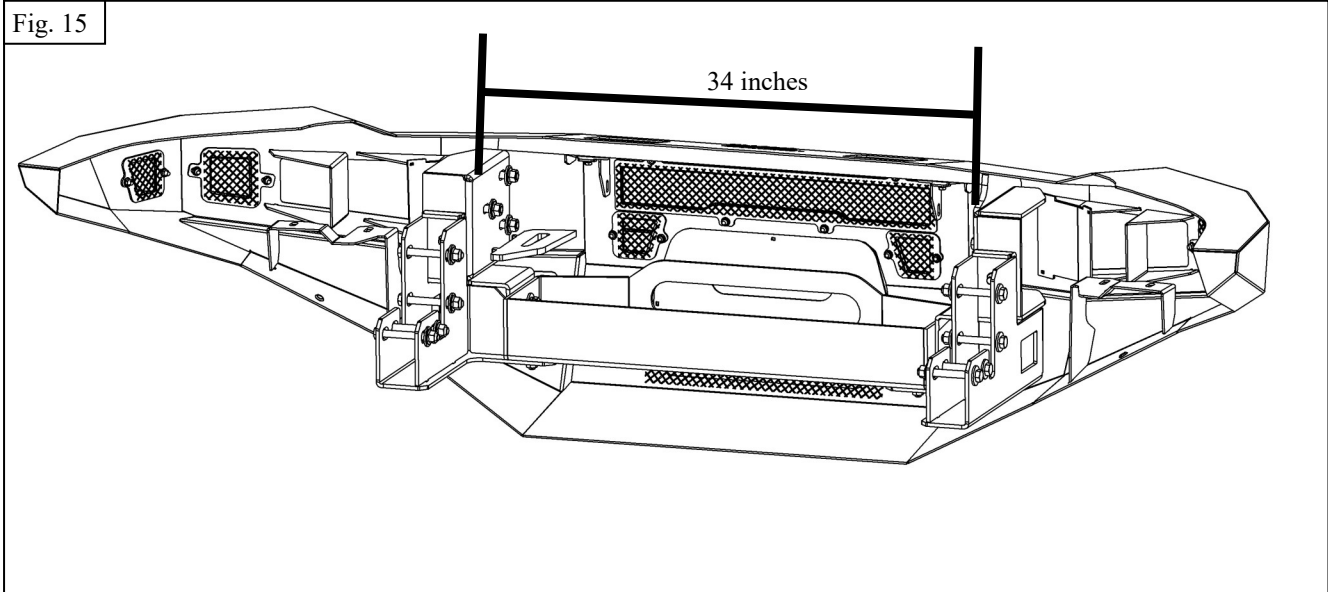




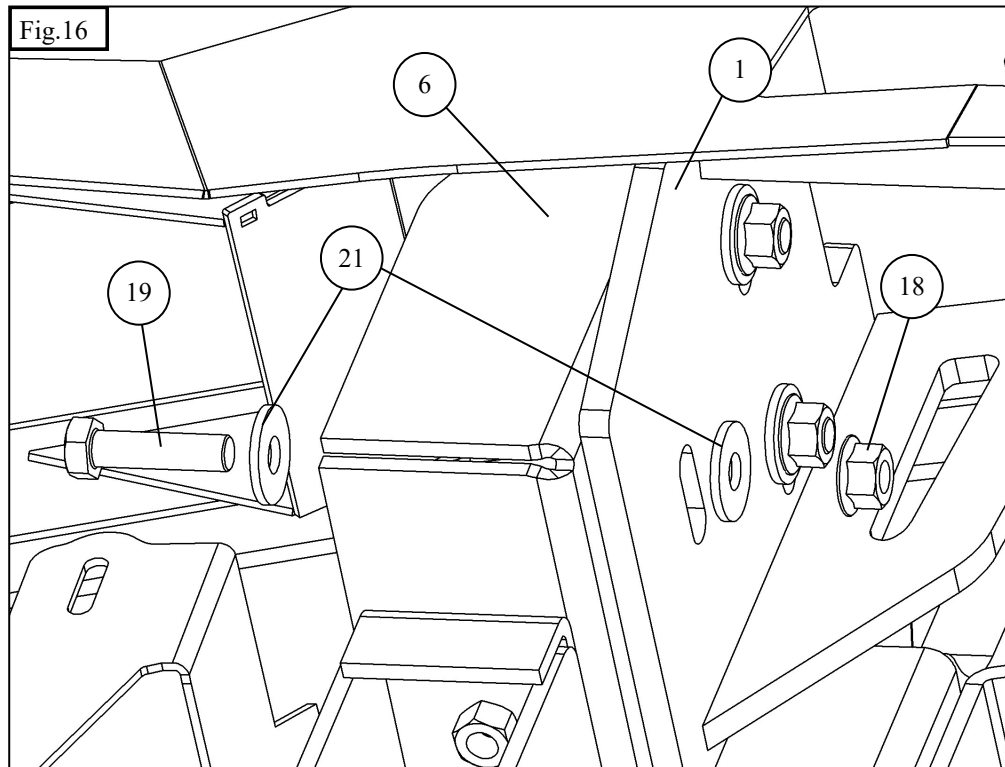
15. Install the led light mesh cover using supplied M6 hardware. **See Figure 13**
16. If installing a light bar, install using the supplied LED light brackets and supplied M6 hardware, if applicable. Install light per manufacturers recommendation. **See Figure 14**
17. If using light pods, install at this time.



18. Measure the inner distance of the main mounting brackets. Make sure the distance matches the outer distance on the bumper mounting locations. (about 34 inches) See Figure 15



19. With help, mount the bumper to the mounting brackets using supplied M12 hardware. See Figure 16
20. Adjust as needed and torque all hardware as specified: M6 to 7 ft. lbs, M12 to 55-60 ft-lbs.
21. Trim the front of the inner fender liner as needed.



INSTALLATION COMPLETE



CARE INSTRUCTIONS

- REGULAR WAXING IS RECOMMENDED. DO NOT USE ANY TYPE OF POLISH OR WAX THAT MAY CONTAIN ABRASIVES.
- STAINLESS STEEL PRODUCTS CAN BE CLEANED WITH MILD SOAP AND WATER. STAINLESS STEEL POLISH SHOULD BE USED TO POLISH SMALL SCRATCHES.
- GLOSS BLACK FINISHES SHOULD BE CLEANED WITH MILD SOAP AND WATER.

WESTIN Westin Automotive Products, Inc.
320 W. Covina Blvd
San Dimas, Ca. 91773

P.N.: 75-58411195-RevA

ECO #: W20-0117

8

Thank you for choosing Westin products
for additional installation assistance please call
Customer Service (800) 793-7846
www.westinautomotive.com

DATE: 04/14/2021



WARNING



Failure to follow these instructions could lead to death, personal injury, and / or property damage.

Failure to follow these instructions could lead to death, personal injury, and / or property damage.

FASTENERS:

All Westin supplied fasteners must be utilized and installed in accordance with the installation instructions and apply torque to the specifications as defined. **DOUBLE CHECK ALL FASTENERS BEFORE INITIAL USE, AND PERIODICALLY IN THE FUTURE TO ENSURE PROPER FUNCTION AND SAFETY.**

DRILLING:

Most Westin products do not require drilling for installation. If drilling is defined as required, use caution when drilling a vehicle. **FAILURE TO REVIEW AN AREA TO BE DRILLED MAY RESULT IN PERSONAL INJURY AND/OR INJURY TO OTHERS AS WELL AS VEHICLE DAMAGE.**

EYE PROTECTION:

ALWAYS WEAR SAFETY GLASSES OR GOGGLES DURING THE INSTALLATION PROCESS TO AVOID PERSONAL INJURY.

MAXIMUM TOWING/CARRYING CAPACITY: (if applicable)

The Westin Receiver Hitches will have a visible tow rating label affixed directly on the product. User should never exceed the vehicle manufacturers maximum tow and weight rating regardless of the capacity of the hitch. **FAILURE TO FOLLOW THESE GUIDELINES WILL VOID THE WESTIN WARRANTY AND MAY RESULT IN PERSONAL INJURY AND/OR INJURY TO OTHERS AS WELL AS VEHICLE DAMAGE.**

FOR CALIFORNIA RESIDENTS ONLY-PROP 65 WARNING:

Some products may contain chemicals such as DEHP, which can cause cancer, birth defects or other reproductive harm. For more info go to www.p65warnings.ca.gov



Westin Automotive Products, Inc.
320 W. Covina Blvd
San Dimas, Ca. 91773