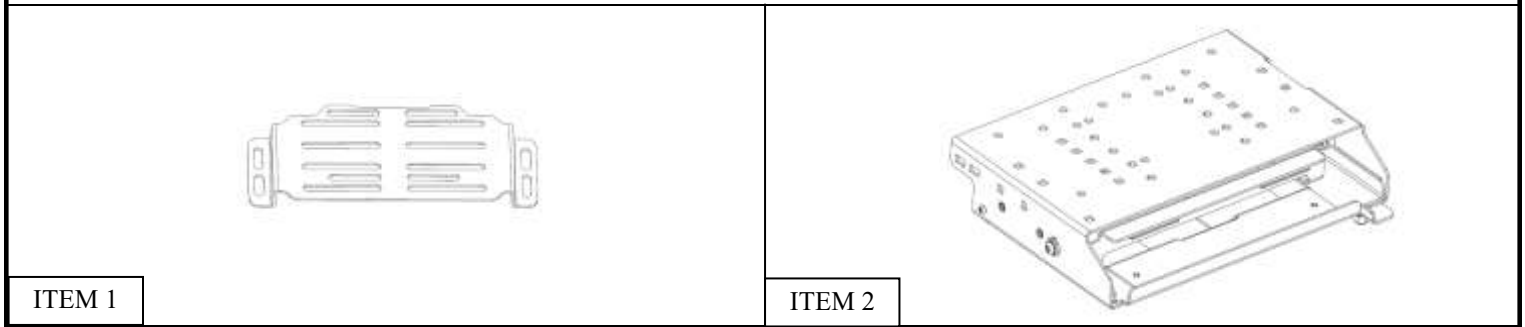


INSTALLATION INSTRUCTIONS



**LAPTOP PRINTER MOUNT
APPLICATION:
UNDER LAPTOP PRINTER TRAY W/SLIDE OUT DRAWER
FOR BROTHER POCKET JET & PRINTEK i80.
INCLUDES LAPTOP MOUNT SPACER BRACKET W/ VESA & 3"x3" BOLT PATTERN.
PART NUMBER:
500-0238**

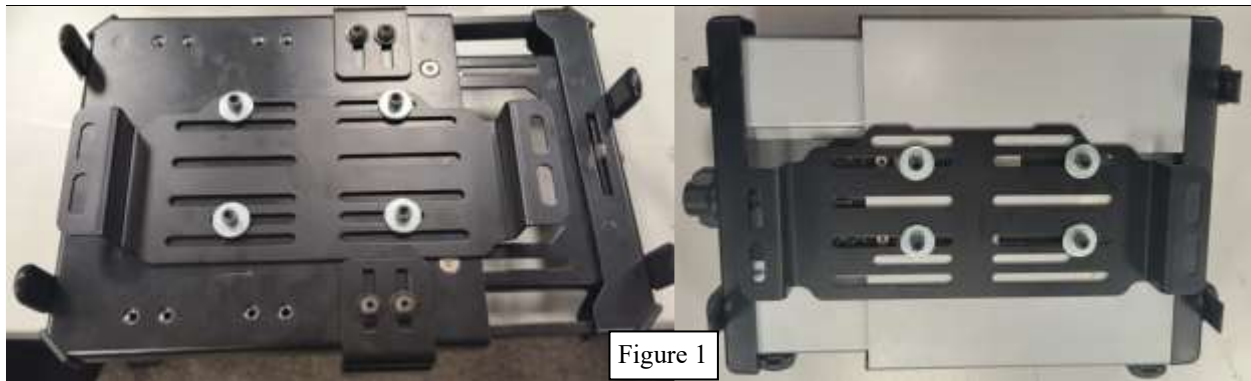
CONTENT			
ITEM	QUANTITY	DESCRIPTION	TOOLS NEEDED
1	1	Mount Bracket Spacer	7/16 Wrench
2	1	Printer Mount	5/16 Socket
3	4	1/4 Square Neck Bolts	Ratchet
4	4	1/4 Washer	
5	4	1/4 Lock Washer	
6	4	1/4 A-Corn Nut	



PROCEDURE

- Remove contents from box, verify if all parts listed are present and free from damage. Carefully read and understand all instructions before attempting installation.
Failure to identify damage before installation could lead to a rejection of any claim.

- Position the Mount Bracket Spacer (1) onto your preferred laptop mount (not supplied) align to the slots that better suits your needs, and use the screws supplied by the laptop mount to tighten and hold the printer in place. Image 1.



3. Pres the lever down and slide out printer mount door. (Figure 2)
4. Use the provided 1/4 hardware to install the spacer bracket mount (1) with the laptop mount on the printer mount (2) Figures 2-4. Figure 3 shows mounting hole locations. Adjust and tighten hardware.
5. Locate and loose 5/16 nuts on printer bracket holder per Figure 5 to install the printer. Adjust and tighten hardware.

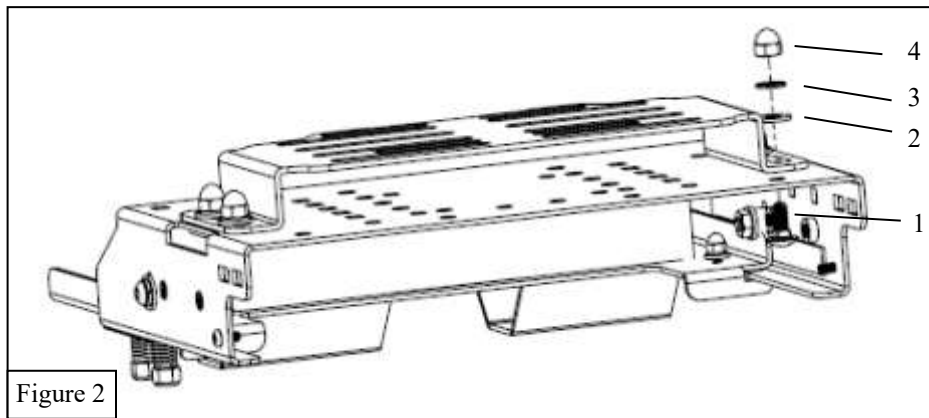


Figure 2

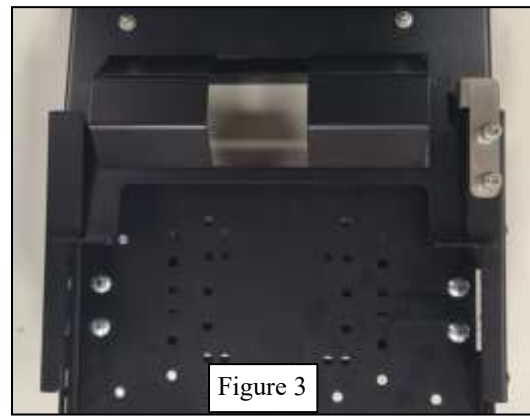


Figure 3



Figure 4

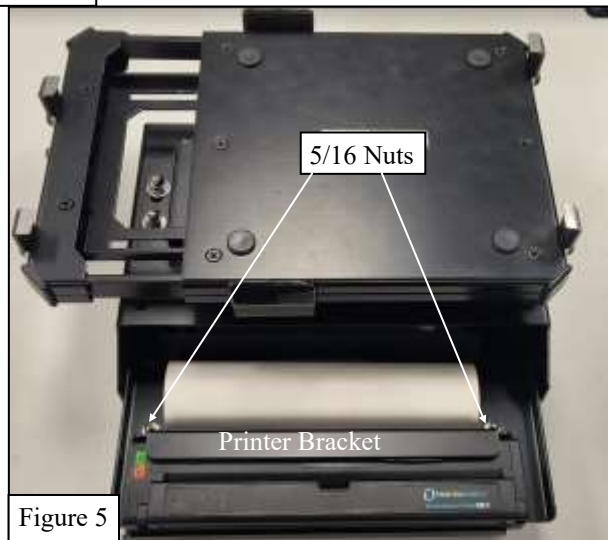


Figure 5

INSTALLATION COMPLETE





WARNING



Failure to follow these instructions could lead to death, personal injury, and / or property damage.

Failure to follow these instructions could lead to death, personal injury, and / or property damage.

FASTENERS:

All Westin supplied fasteners must be utilized and installed in accordance with the installation instructions and apply torque to the specifications as defined. **DOUBLE CHECK ALL FASTENERS BEFORE INITIAL USE, AND PERIODICALLY IN THE FUTURE TO ENSURE PROPER FUNCTION AND SAFETY.**

DRILLING:

Most Westin products do not require drilling for installation. If drilling is defined as required, use caution when drilling a vehicle. **FAILURE TO REVIEW AN AREA TO BE DRILLED MAY RESULT IN PERSONAL INJURY AND/OR INJURY TO OTHERS AS WELL AS VEHICLE DAMAGE.**

EYE PROTECTION:

ALWAYS WEAR SAFETY GLASSES OR GOGGLES DURING THE INSTALLATION PROCESS TO AVOID PERSONAL INJURY.

MAXIMUM TOWING/CARRYING CAPACITY: (if applicable)

The Westin Receiver Hitches will have a visible tow rating label affixed directly on the product. User should never exceed the vehicle manufacturers maximum tow and weight rating regardless of the capacity of the hitch. **FAILURE TO FOLLOW THESE GUIDELINES WILL VOID THE WESTIN WARRANTY AND MAY RESULT IN PERSONAL INJURY AND/OR INJURY TO OTHERS AS WELL AS VEHICLE DAMAGE.**

FOR CALIFORNIA RESIDENTS ONLY-PROP 65 WARNING:

Some products may contain chemicals such as DEHP, which can cause cancer, birth defects or other reproductive harm. For more info go to www.p65warnings.ca.gov



Westin Automotive Products, Inc.
320 W. Covina Blvd
San Dimas, Ca. 91773