

INSTALLATION INSTRUCTIONS

PIT BAR ELITE XD



APPLICATION:
2023-2024 SILVERADO PPV

PART NUMBER:
36-52135PB

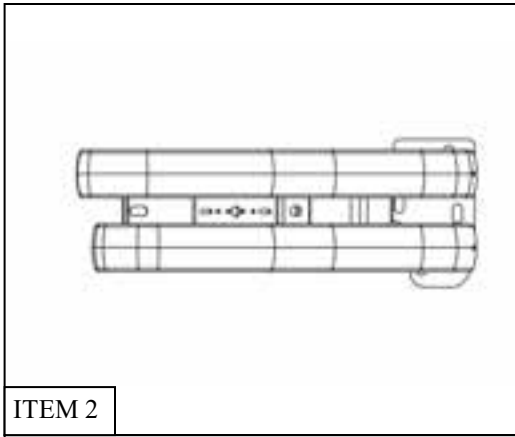
CONTENT			
ITEM	QUANTITY	DESCRIPTION	TOOLS NEEDED
1	1	DRIVER SIDE PIT BAR ASSEMBLY	
2	1	PASSENGER SIDE PIT BAR ASSEMBLY	
3	1	DRIVER SIDE BOTTOM BRACKET	
4	1	PASSENGER SIDE BOTTOM BRACKET	
5	1	DRIVER SIDE STRAP	
6	1	PASSENGER SIDE STRAP	
7	2	LONG SPACER 212mm	
8	2	SHORT SPACER 164mm	
9	2	OPTIONAL SPACER 12mm	
10	2	M12 BOLT PLATE	
11	2	M12 L BOLT PLATE	
12	6	PLASTIC POLY RETAINER	
13	1	M12 FISH WIRE BOLT LEADER	
14	1	DRIVER CUT TEMPLATE	
15	1	PASSENGER CUT TEMPLATE	
16	12	M12 BUTTON HEAD CAP SCREW (BLACK ZINC)	
17	8	M12 FLANGE HEX NUT (BLACK ZINC)	
18	12	M12 BELLVILLE WASHER (BLACK ZINC)	
19	2	M10 FLANGE HEX HEAD BOLT (YELLOW ZINC)	
20	2	M10 FLANGE HEX NUT (YELLOW ZINC)	
21	4	M12 HEX HEAD SCREW (YELLOW ZINC)	
22	4	M12 FLANGE HEX NUT (YELLOW ZINC)	

ANTI-SEIZE LUBRICANT MUST BE USED ON ALL STAINLESS STEEL FASTENERS TO PREVENT THREAD DAMAGE AND GALLING

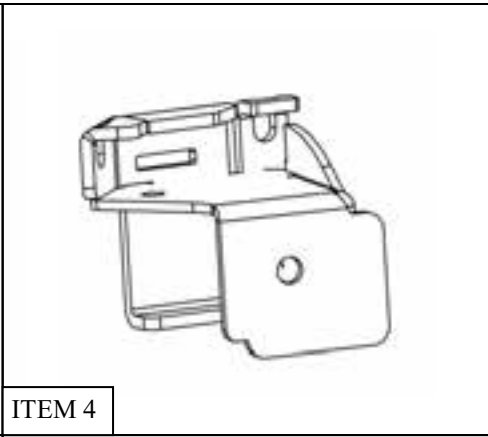
Pit Bar can only be installed if grille guard is installed as well.

Note:

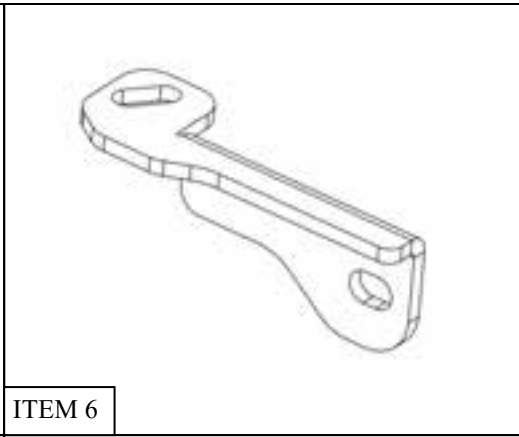
****Vehicles with the optional safety package have front sensors that can only be disabled by adding the (KGU) Universal Vehicle Module (UVM) from GM.****



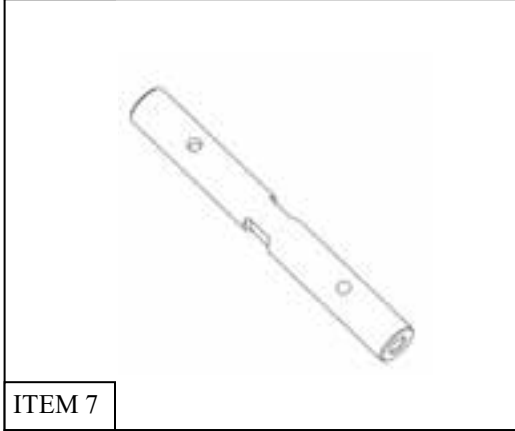
ITEM 2



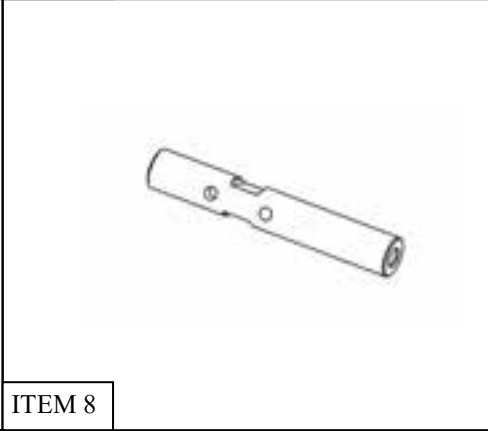
ITEM 4



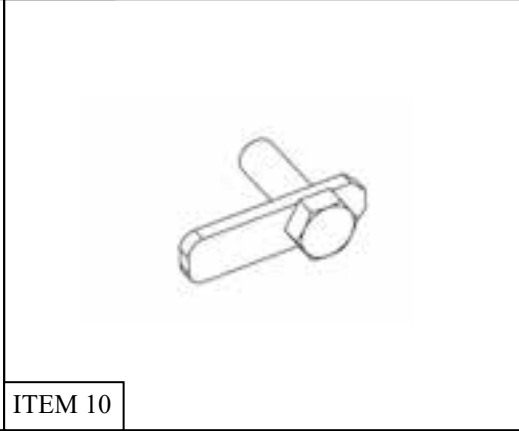
ITEM 6



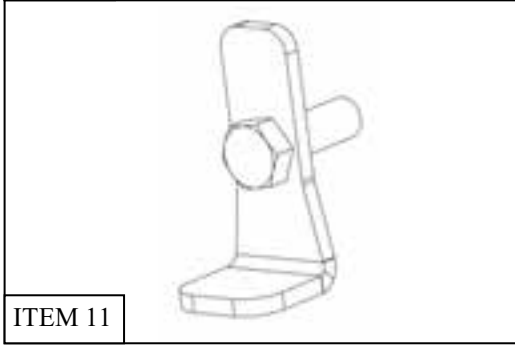
ITEM 7



ITEM 8



ITEM 10



ITEM 11

NOTE

- If Plastic Trim is along edges as seen in **Figure** below please remove it.



PROCEDURE

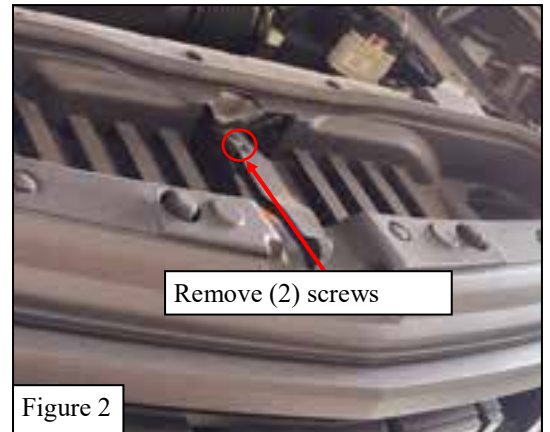
1. Remove contents from box, verify if all parts listed are present and free from damage. Carefully read and understand all instructions before attempting installation.
Failure to identify damage before installation could lead to a rejection of any claim.

NOTE:

This pit bar kit is to be installed with PN: 36-52135 at the same time.

If installing in a civilian vehicle, the product will not work with factory parking sensors. (See note on page 1)

2. Begin by removing all plastic fasteners. See **Figure 1**.
3. Remove the two screws as seen in **Figure 2** using the Torx Wrench T10 screwdriver, once removed pull the lever towards you to remove. Remove plastic by pulling up.



4. Remove the plastic fasteners holding the grille in place and detach the clips of the wings of the grille, as seen in **Figures 3 & 4**.



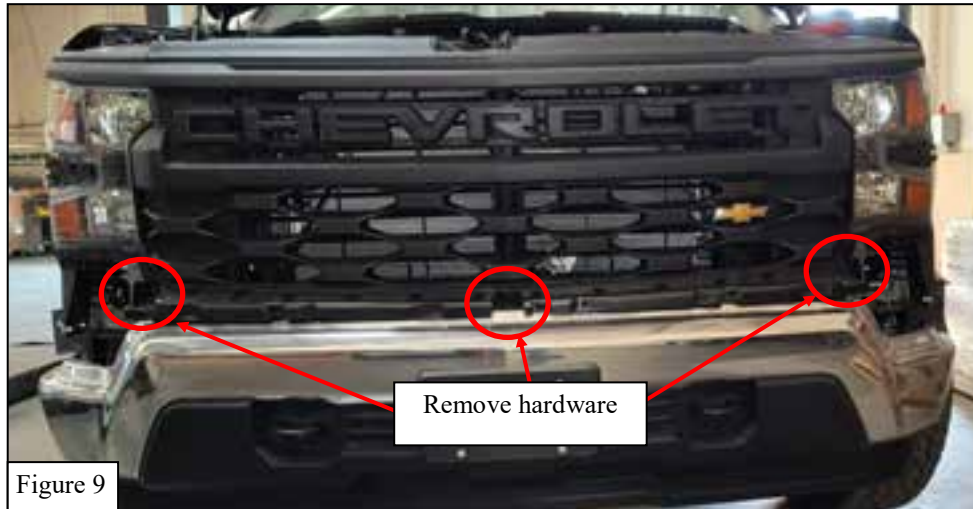
5. Remove the fasteners retaining the panel above the bumper from the inside of the wheel wells as seen in **Figure 5**.
6. Remove the trim panel from the clips near the headlights. Use a pry tool if necessary. See **Figure 6**.



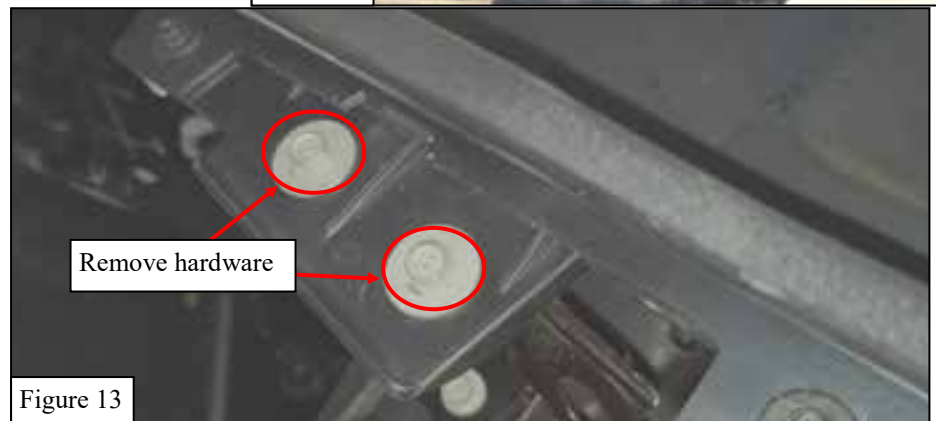
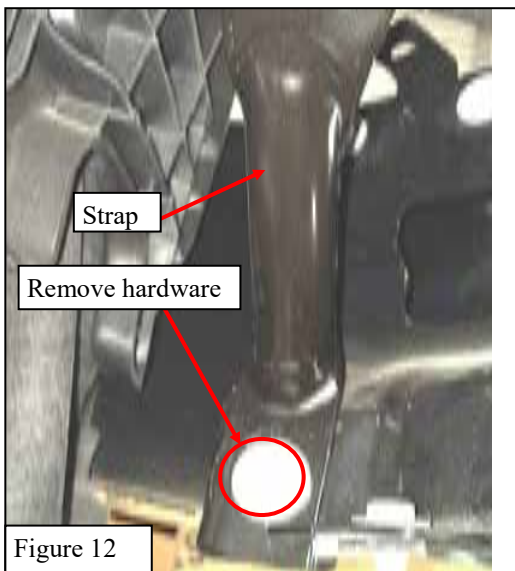
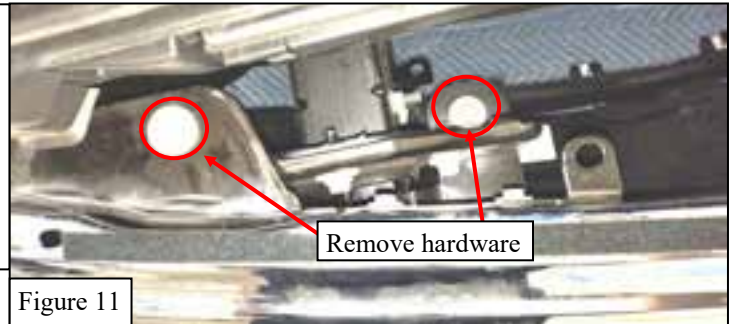
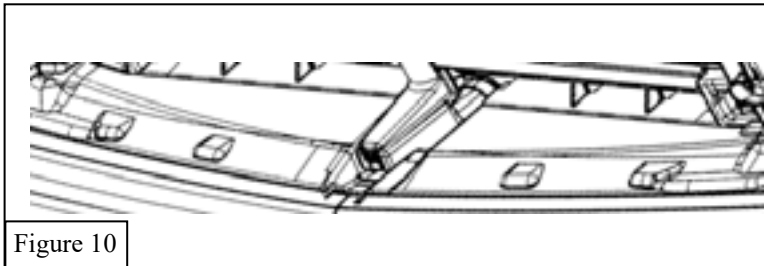
7. On both sides of the vehicle, use a pry tool to remove the trim panel from the clips shown below. See **Figures 7-8**.
8. Remove the trim panel above the bumper.
9. Remove the fasteners retaining the grille.
10. Remove the grille from the clips above the headlights.
11. Remove the grille by loosen the top area, then firmly pulling it away from the vehicle.



12. Remove the (3) bolts from the bumper of the vehicle using a M10 Socket, see **Figure 9** for locations.



13. After removing the grille pull the plastic cover as seen on **Figure 10** up to detach the fasteners and remove plastic cover.
14. Remove (4) O.E. hardware located underneath the plastic cover that was removed. See **Figures 11&12**.
15. Remove (4) O.E. hardware attached to the plastic skid plate. See **Figure 13**.
16. Remove Bumper by carefully pulling it out.

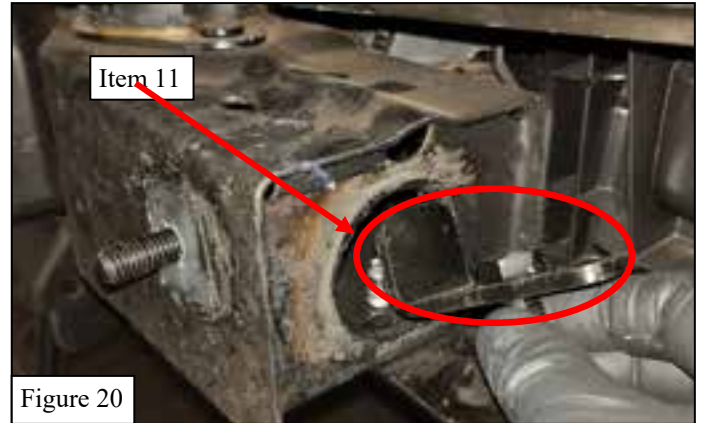


17. With the fascia removed, align the cutting templates (Items 14 & 15) to the bottom of the trim and the wheel well and follow the templates instructions. See **Figure 14-18** and follow them. Drill hole size 1.5in then cut down to the edge. See **Figure 18**.

Note: Before making the hole, make a small hole locating the center of the hole.



18. Start the installation of the mounting brackets by first using the M12 fish wire (Item 13) to guide the M12 bolt plate (Item 10) into the frame extension. See **Figure 19**. Then use a plastic polymer retainer (item 12) on bolt. See **Figure 20**
19. Insert the M12 L Bolt Plate (Item 11) as seen in **Figure 20 & 21**



20. Install the Bottom bracket (Items 3 & 4) using the M12 L bolt plate previously installed and M12 Flange hex nut (Item 22). Tighten nuts to 50-65 ft-lb. See **Figure 22**.
- Note:* Make sure the Bottom bracket is pushed up as much as possible with the frame extension **Figure 23**, while still having the M12 L bolt plate in.



21. Mount the Side strap (Items 5 & 6) onto the frame extension using the previously installed M12 Bolt plate and M12 flange hex nut (Item 22). (Once step x is completed tighten M12 Nut to 50-65 ft-lb.)
22. Connect the Side Strap and bottom bracket together by using the M10 Flange hex head bolt (Item 19) and M10 flange hex nut (Item 20). See **Figure 23**. (Tighten M10 flange hex nut to 30-40 ft-lb.)



Figure 23

23. Insert (2) M12 hex head screw (Item 21) into the Bottom Bracket (Item 3&4) and cover it using the Plastic poly retainer (Item 12). See **Figures 24 and 27**.



Figure 24

24. Screw on both the long and short spacer (items 8 &9) onto the M12 Hex head screw (Item 21). See **Figure 25 –27**

Note: There should be a long spacer on both the passenger and drivers side.



Figure 25



Figure 26

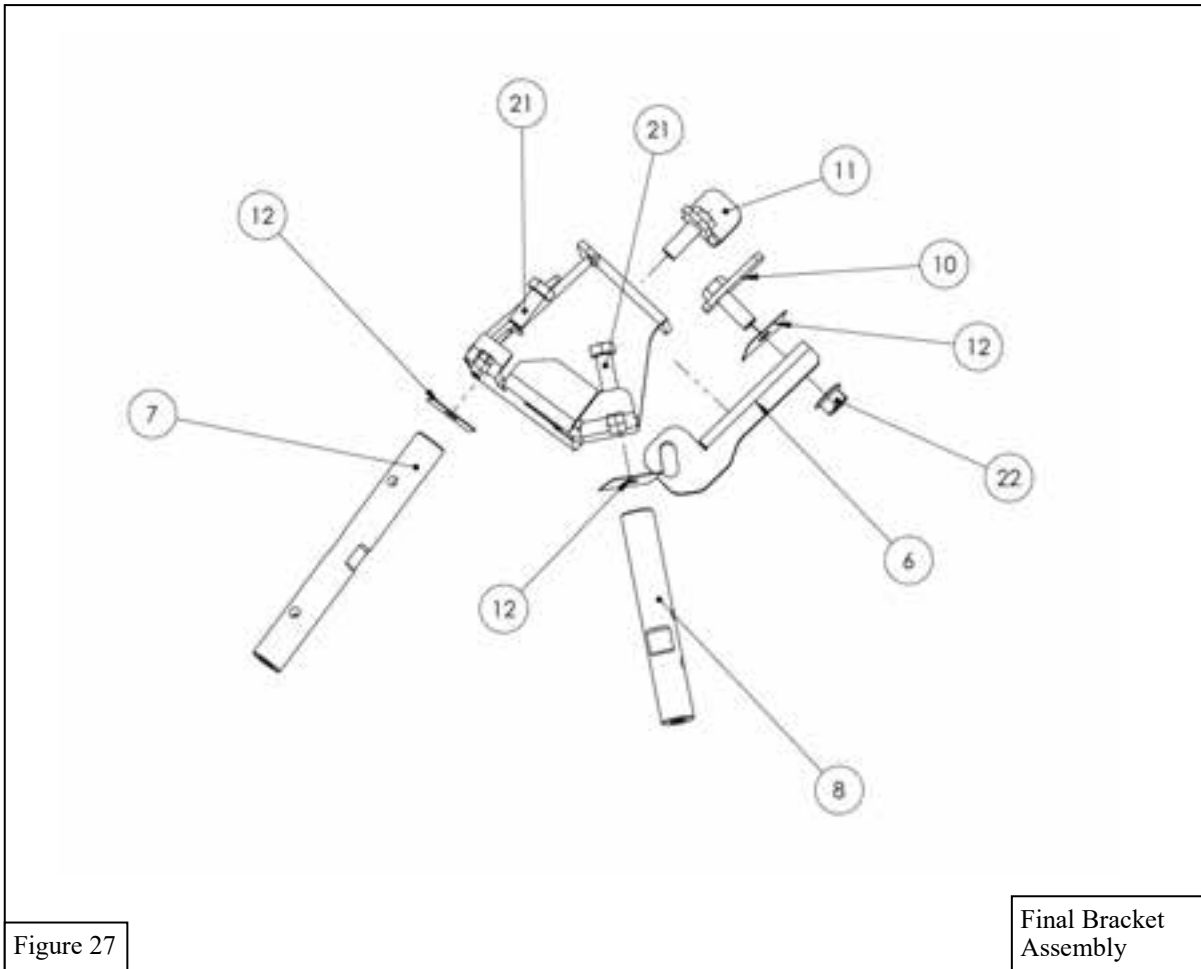


Figure 27

Final Bracket Assembly

25. Make sure the instructions for the Westin Grille Guard are aligned and reinstall bumper.
26. Install Trim. See **Figure 28**



Figure 28

Note: The Grille Guard should be installed prior to step 27

27. Mount Pit bar assembly (Item 1 & 2) onto spacer using the M12 Button Head Cap Screw and M12 Bellville Washer (Items 16 & 18). See **Figure 30-31**

Optional Step

- If Optional Spacer (Item 9) is needed for the Short Spacer (Item 8) (bracket in front of vehicle) install it when mounting the pit bar onto vehicle. See **Figure 29**

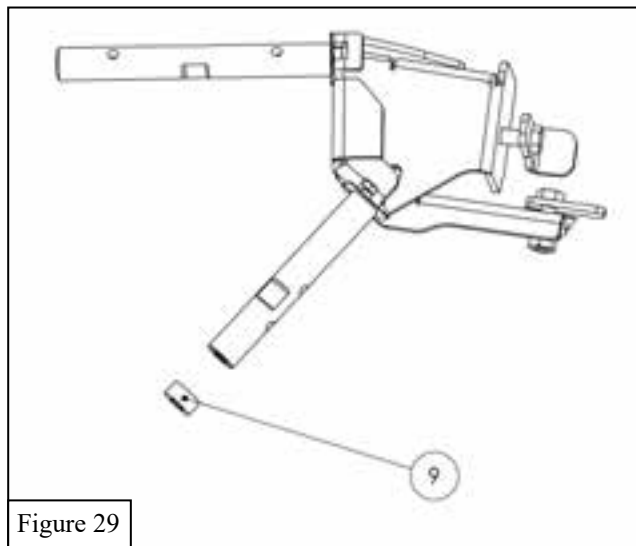
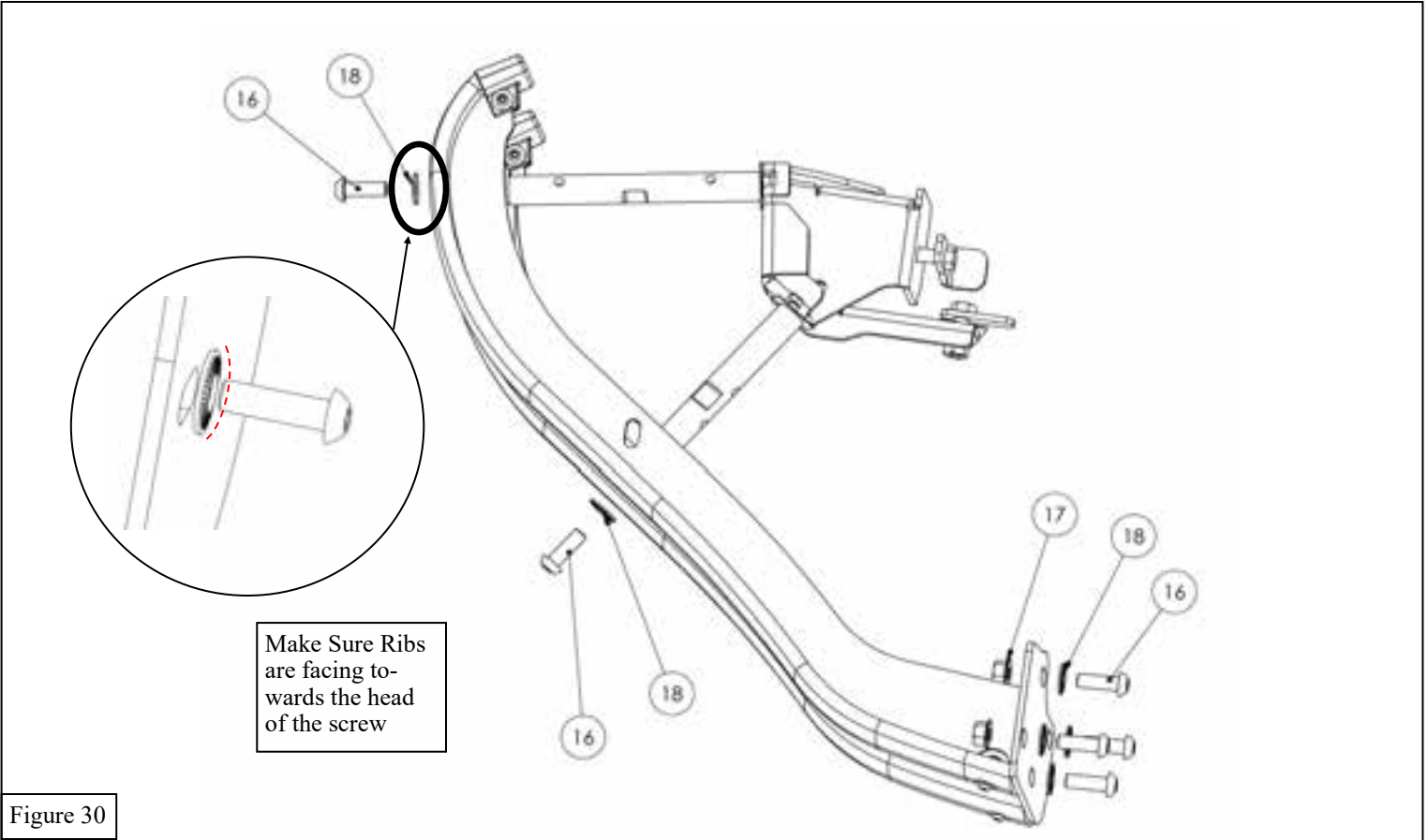


Figure 29

28. Connect Pit Bar Assembly onto the grille guard using the M12 Button head cap screw hardware (Items 16-18). See Figures 30-31.



29. Tighten all button head hardware to 50-65 ft-lb.

INSTALLATION COMPLETE



CARE INSTRUCTIONS

- REGULAR WAXING IS RECOMMENDED. DO NOT USE ANY TYPE OF POLISH OR WAX THAT MAY CONTAIN ABRASIVES.
- STAINLESS STEEL PRODUCTS CAN BE CLEANED WITH MILD SOAP AND WATER. STAINLESS STEEL POLISH SHOULD BE USED TO POLISH SMALL SCRATCHES.
- GLOSS BLACK FINISHES SHOULD BE CLEANED WITH MILD SOAP AND WATER.

WESTIN Westin Automotive Products, Inc.
320 W. Covina Blvd
San Dimas, Ca. 91773

Thank you for choosing Westin products
for additional installation assistance please call
Customer Service (800) 793-7846
www.westinautomotive.com



WARNING



Failure to follow these instructions could lead to death, personal injury, and / or property damage.

Failure to follow these instructions could lead to death, personal injury, and / or property damage.

FASTENERS:

All Westin supplied fasteners must be utilized and installed in accordance with the installation instructions and apply torque to the specifications as defined. **DOUBLE CHECK ALL FASTENERS BEFORE INITIAL USE, AND PERIODICALLY IN THE FUTURE TO ENSURE PROPER FUNCTION AND SAFETY.**

DRILLING:

Most Westin products do not require drilling for installation. If drilling is defined as required, use caution when drilling a vehicle. **FAILURE TO REVIEW AN AREA TO BE DRILLED MAY RESULT IN PERSONAL INJURY AND/OR INJURY TO OTHERS AS WELL AS VEHICLE DAMAGE.**

EYE PROTECTION:

ALWAYS WEAR SAFETY GLASSES OR GOGGLES DURING THE INSTALLATION PROCESS TO AVOID PERSONAL INJURY.

MAXIMUM TOWING/CARRYING CAPACITY: (if applicable)

The Westin Receiver Hitches will have a visible tow rating label affixed directly on the product. User should never exceed the vehicle manufacturers maximum tow and weight rating regardless of the capacity of the hitch. **FAILURE TO FOLLOW THESE GUIDELINES WILL VOID THE WESTIN WARRANTY AND MAY RESULT IN PERSONAL INJURY AND/OR INJURY TO OTHERS AS WELL AS VEHICLE DAMAGE.**

FOR CALIFORNIA RESIDENTS ONLY-PROP 65 WARNING:

Some products may contain chemicals such as DEHP, which can cause cancer, birth defects or other reproductive harm. For more info go to www.p65warnings.ca.gov



Westin Automotive Products, Inc.
320 W. Covina Blvd
San Dimas, Ca. 91773