

# INSTALLATION INSTRUCTIONS

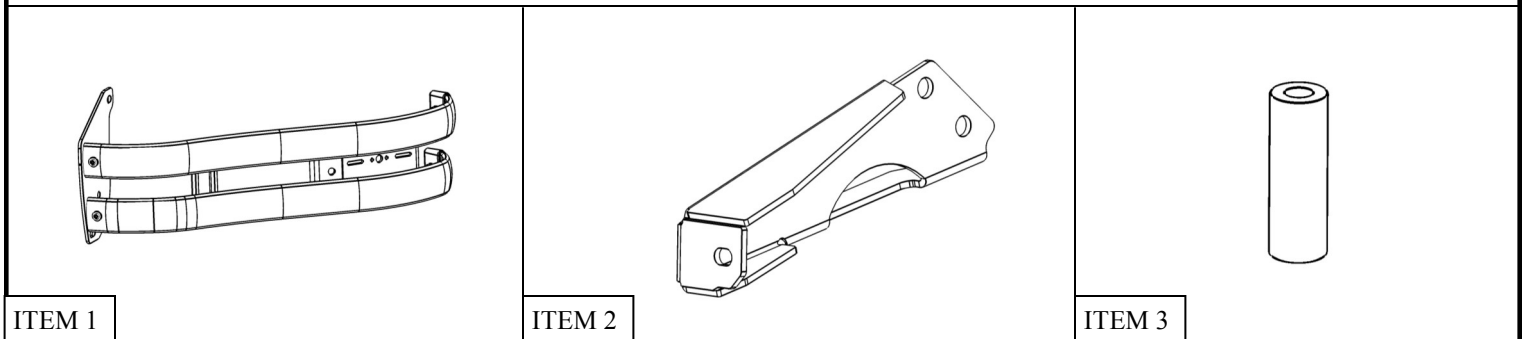
## PIT BAR ELITE XD



**APPLICATION:**  
2018-2019 Ford F-150 Police Responder  
**PART NUMBER:**  
36-52065PB

CONTENT			
ITEM	QUANTITY	DESCRIPTION	TOOLS NEEDED
1	2	PIT BAR ASSEMBLY (1 DRIVER, 1 PASSENGER)	16MM SOCKET
2	2	MOUNTING BRACKET (1 DRIVER, 1 PASSENGER)	16MM WRENCH
3	2	SPACER	18MM SOCKET
4	2	DRILLING TEMPLATE (1 DRIVER, 1 PASSENGER)	18MM WRENCH
5	6	M12 SERRATED FLANGE NUT	19MM SOCKET
6	2	M12 SOCKET HEAD CAP SCREW	19MM WRENCH
7	2	M12 FLAT WASHER	RATCHET
8	6	SHORT M10 BUTTON HEAD SCREW	TORQUE WRENCH
9	2	LONG M10 BUTTON HEAD SCREW	ALLEN WRENCH
10	8	M10 BELLVILLE WASHER	
11	8	M10 SERRATED FLANGE NUT	

**ANTI-SEIZE LUBRICANT MUST BE USED ON ALL STAINLESS STEEL FASTENERS TO PREVENT THREAD DAMAGE AND GALLING**

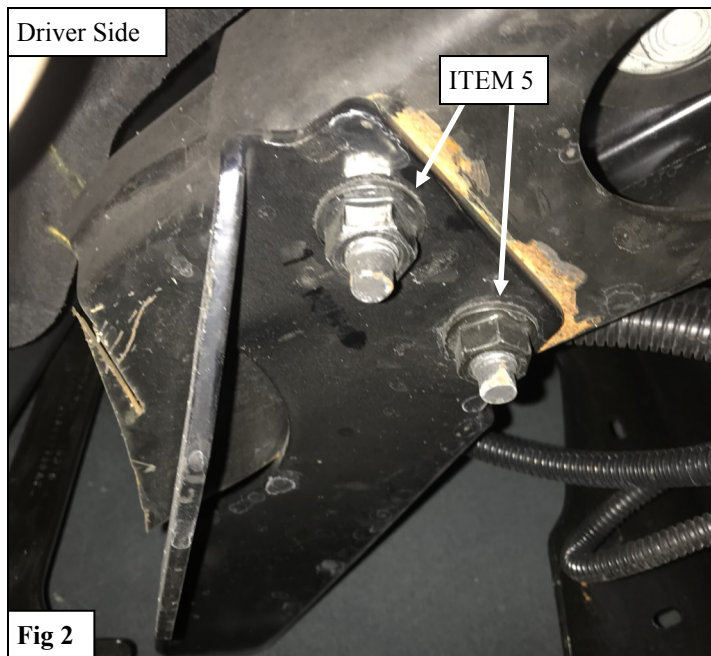
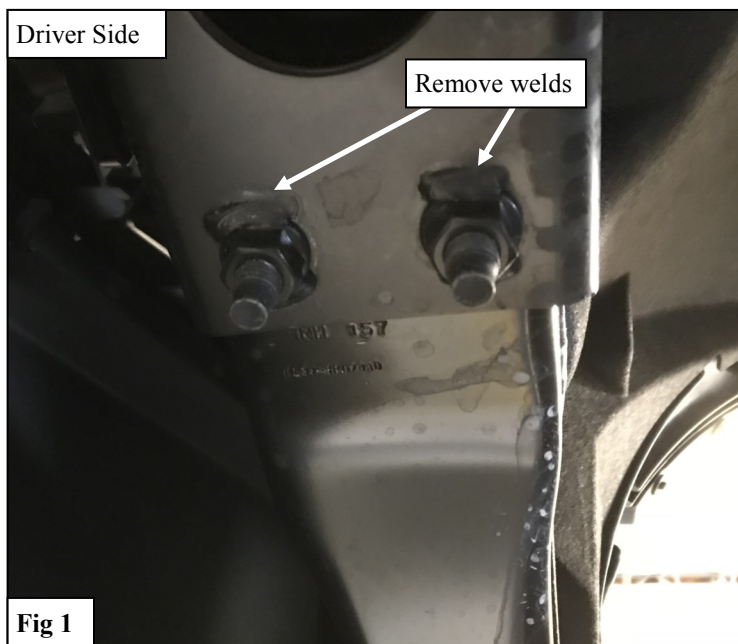


DRIVER SIDE ITEMS SHOWN, PASSENGER SIDE OPPOSITE

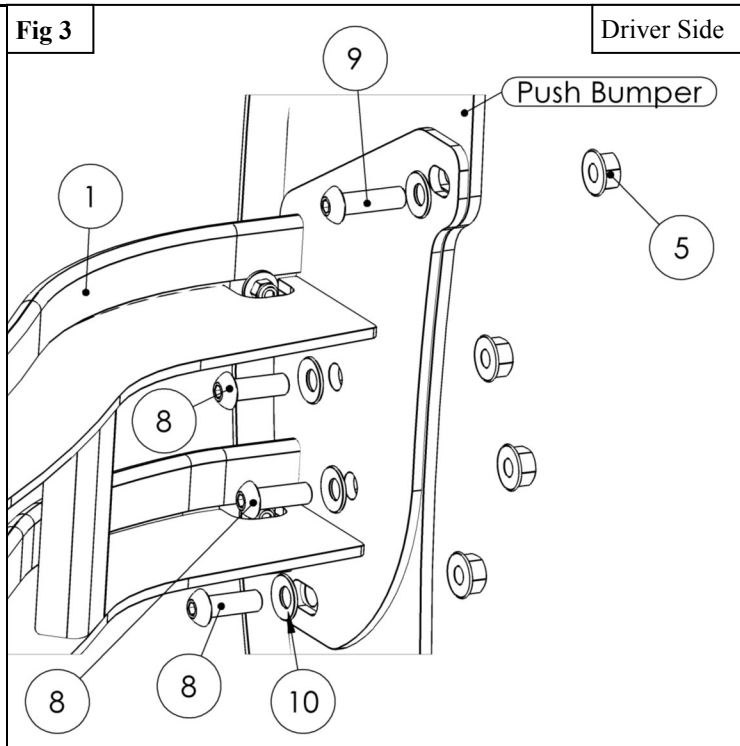
### PROCEDURE

1. Remove contents from box, verify if all parts listed are present and free from damage.  
Carefully read and understand all instructions before attempting installation.  
**Failure to identify damage before installation could lead to a rejection of any claim.**

2. Starting on the frame just behind the bumper, remove the two welded nuts shown in **Figure 1**. Do so by carefully grinding away the weld until a breaker bar can be used to loosen the nuts. **Note: Do not damage the threads on the bolts, they will be used to install the Mounting Brackets (2).**
3. Loosely install the Mounting Bracket (2) to the 2 factory bolts using the supplied M12 Flange Nut (5) as shown in **Figure 2**.



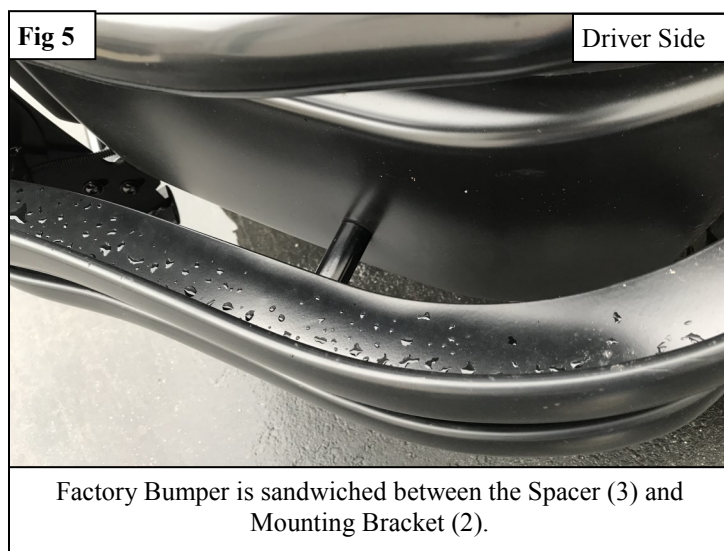
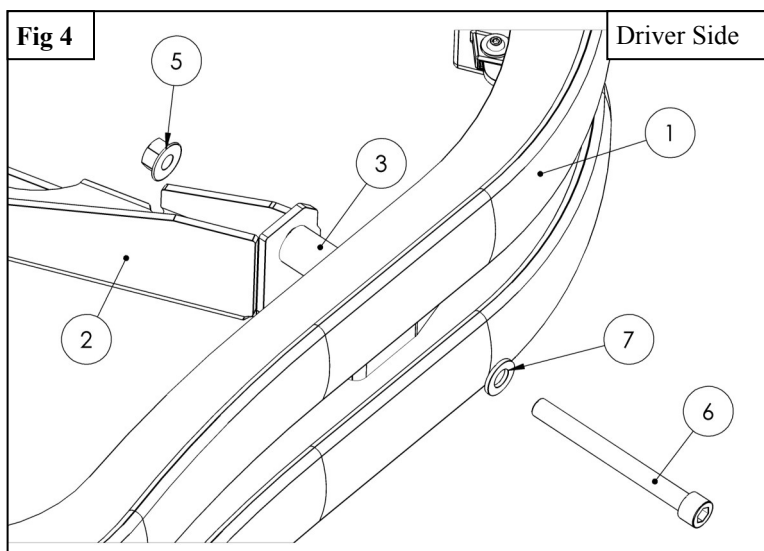
4. Use the supplied Template (4) to determine where to drill a **1/2"** hole in the vehicle's bumper. Follow the instructions on the template, then mark and drill the **1/2"** hole needed to install the Pit Bar Assembly (1).
5. Loosely install the Pit Bar Assembly (1) to your push bumper (sold separately) using the supplied M10 Hardware. See **Figure 3**.



**WESTIN**

Westin Automotive Products, Inc.  
320 W. Covina Blvd  
San Dimas, Ca. 91773

6. Use the supplied M12 Hardware and Spacer (3) to secure the Pit Bar (1) to the Mounting Bracket (2). See **Figures 4 & 5**.



7. Align and adjust the Push Bumper and Pit Bar then torque all hardware as follows: M10 Hardware to 35 ft-lb, M12 Hardware to 60 ft-lb.
8. *Optional Step: the provided holes on the Pit Bar can be used to mount an emergency light.* See **Figures 6 & 7**.





INSTALLATION COMPLETE



Push Bumper and lights sold separately

CARE INSTRUCTIONS

- REGULAR WAXING IS RECOMMENDED. DO NOT USE ANY TYPE OF POLISH OR WAX THAT MAY CONTAIN ABRASIVES
- STAINLESS STEEL PRODUCTS CAN BE CLEANED WITH MILD SOAP AND WATER. STAINLESS STEEL POLISH SHOULD BE USED TO POLISH SMALL SCRATCHES.
- GLOSS BLACK FINISHES SHOULD BE CLEANED WITH MILD SOAP AND WATER

**WESTIN**

Westin Automotive Products, Inc.  
320 W. Covina Blvd  
San Dimas, Ca. 91773

Thank you for choosing Westin products  
for additional installation assistance please call  
Customer Service (800) 793-7846

[www.westinautomotive.com](http://www.westinautomotive.com)

DATE: 12/05/18



## WARNING



Failure to follow these instructions could lead to death, personal injury, and / or property damage.

Failure to follow these instructions could lead to death, personal injury, and / or property damage.

### FASTENERS:

All Westin supplied fasteners must be utilized and installed in accordance with the installation instructions and apply torque to the specifications as defined. **DOUBLE CHECK ALL FASTENERS BEFORE INITIAL USE, AND PERIODICALLY IN THE FUTURE TO ENSURE PROPER FUNCTION AND SAFETY.**

### DRILLING:

Most Westin products do not require drilling for installation. If drilling is defined as required, use caution when drilling a vehicle. **FAILURE TO REVIEW AN AREA TO BE DRILLED MAY RESULT IN PERSONAL INJURY AND/OR INJURY TO OTHERS AS WELL AS VEHICLE DAMAGE.**

### EYE PROTECTION:

**ALWAYS WEAR SAFETY GLASSES OR GOGGLES DURING THE INSTALLATION PROCESS TO AVOID PERSONAL INJURY.**

### MAXIMUM TOWING/CARRYING CAPACITY: (if applicable)

The Westin Receiver Hitches will have a visible tow rating label affixed directly on the product. User should never exceed the vehicle manufacturers maximum tow and weight rating regardless of the capacity of the hitch. **FAILURE TO FOLLOW THESE GUIDELINES WILL VOID THE WESTIN WARRANTY AND MAY RESULT IN PERSONAL INJURY AND/OR INJURY TO OTHERS AS WELL AS VEHICLE DAMAGE.**

### FOR CALIFORNIA RESIDENTS ONLY-PROP 65 WARNING:

Some products may contain chemicals such as DEHP, which can cause cancer, birth defects or other reproductive harm. For more info go to [www.p65warnings.ca.gov](http://www.p65warnings.ca.gov)



Westin Automotive Products, Inc.  
320 W. Covina Blvd  
San Dimas, Ca. 91773