



# INSTALLATION INSTRUCTIONS

## DEFENDER SINGLE CELL PARTITION

### APPLICATION:

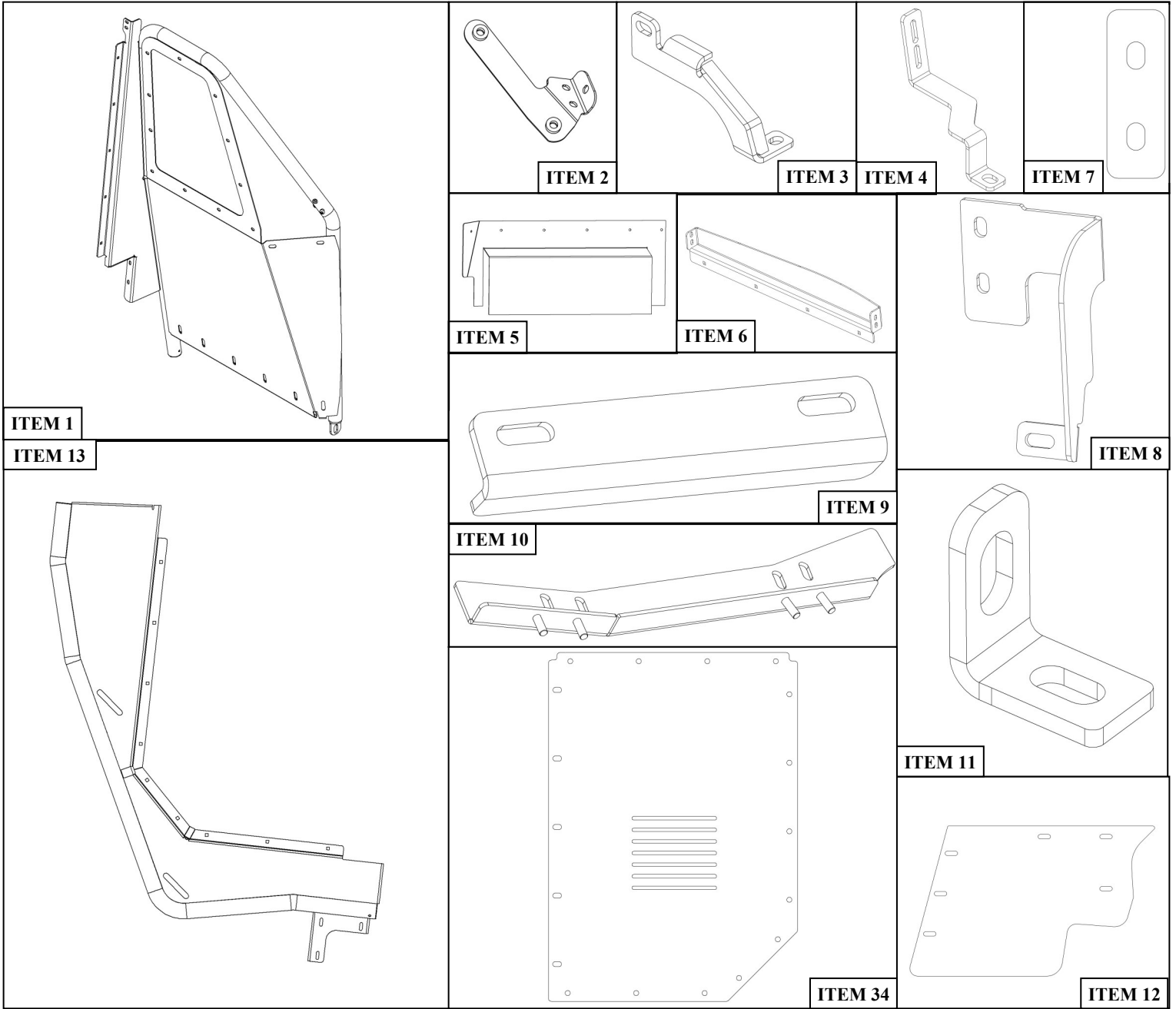
Ford Police Interceptor Utility 2020-2022

### PART NUMBER:

35-220455

ITEM	QUANTITY	DESCRIPTION	TOOLS NEEDED
1	1	SINGLE CELL PARTITION FRONT	14MM SOCKET
2	1	UPPER PASSENGER MOUNTING BRACKET	15MM SOCKET
3	1	PASSENGER MOUNTING BRACKET	18MM SOCKET
4	1	MOUNTING STRAP	UTILITY KNIFE
5	1	FOOT POCKET	PRY TOOL
6	1	UPPER CROSS FRAME	ALLEN WRENCH
7	1	UPPER REAR MOUNTING PLATE	SOCKET EXT.
8	1	UPPER REAR MOUNTING BRACKET	RATCHET
9	1	MIDDLE REAR MOUNTING BRACKET	TORQUE WRENCH
10	1	UPPER INNER M8 MOUNTING BRACKET	7/16" SOCKET
11	2	BOTTOM INNER MOUNTING BRACKET	7/16" WRENCH
12	1	FILLER PLATE	10MM SOCKET
13	1	SINGLE CELL PARTITION SIDE	10MM WRENCH
14	9	M6 FLAT WASHER	1/4" DRILL BIT
15	8	M6 SERRATED FLANGE NUT	
16	1	SHORT M6 BUTTON HEAD BOLT	
17	2	LONG M6 BUTTON HEAD BOLT	
18	2	M6 WIDE FLAT WASHER	
19	3	M6 LOCK WASHER	
20	10	M8 BUTTON HEAD BOLT	
21	3	M8 WIDE FLAT WASHER	
22	7	M8 FLAT WASHER	
23	10	M8 LOCK WASHER	
24	4	M8 SERRATED FLANGE NUT	
25	1	M10 SERRATED FLANGE NUT	
26	1	M10 SERRATED FLANGE BOLT	
27	30	1/4-20 ACORN NUT	
28	12	1/4-20 x 0.625" CARRIAGE BOLT	
29	18	1/4-20 x 0.75" CARRIAGE BOLT	
30	2	1/4-20 x 1" CARRIAGE BOLT	
31	30	1/4" FLAT WASHER	
32	30	1/4" LOCK WASHER	
33	2	1/4" SERRATED FLANGE HEX NUT	
34	1	SIDE WINDOW	

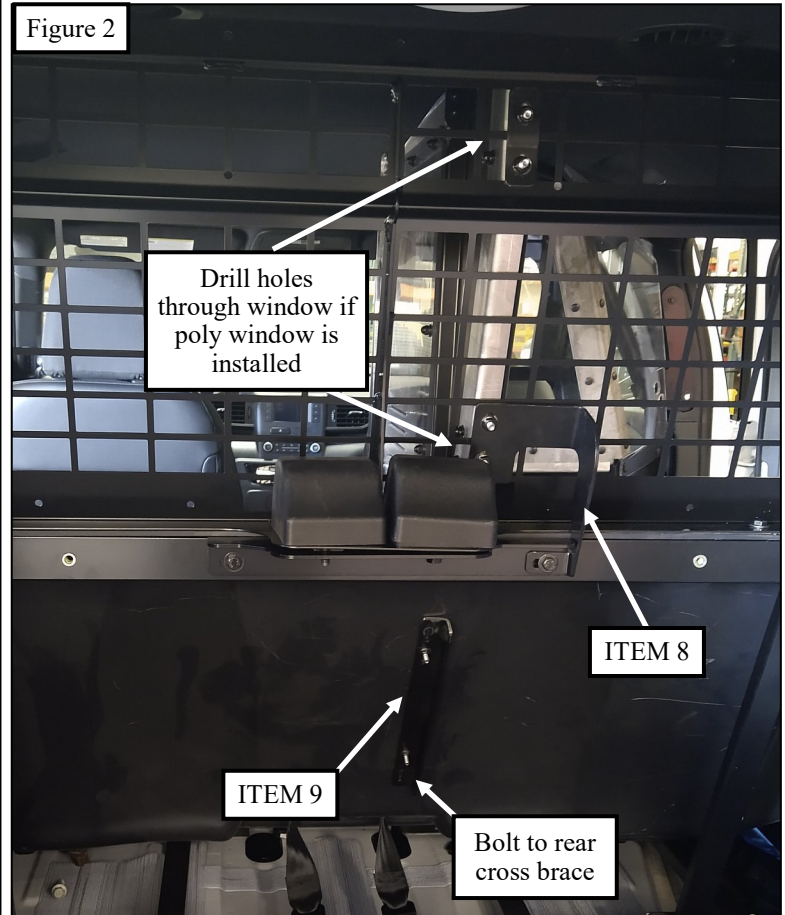
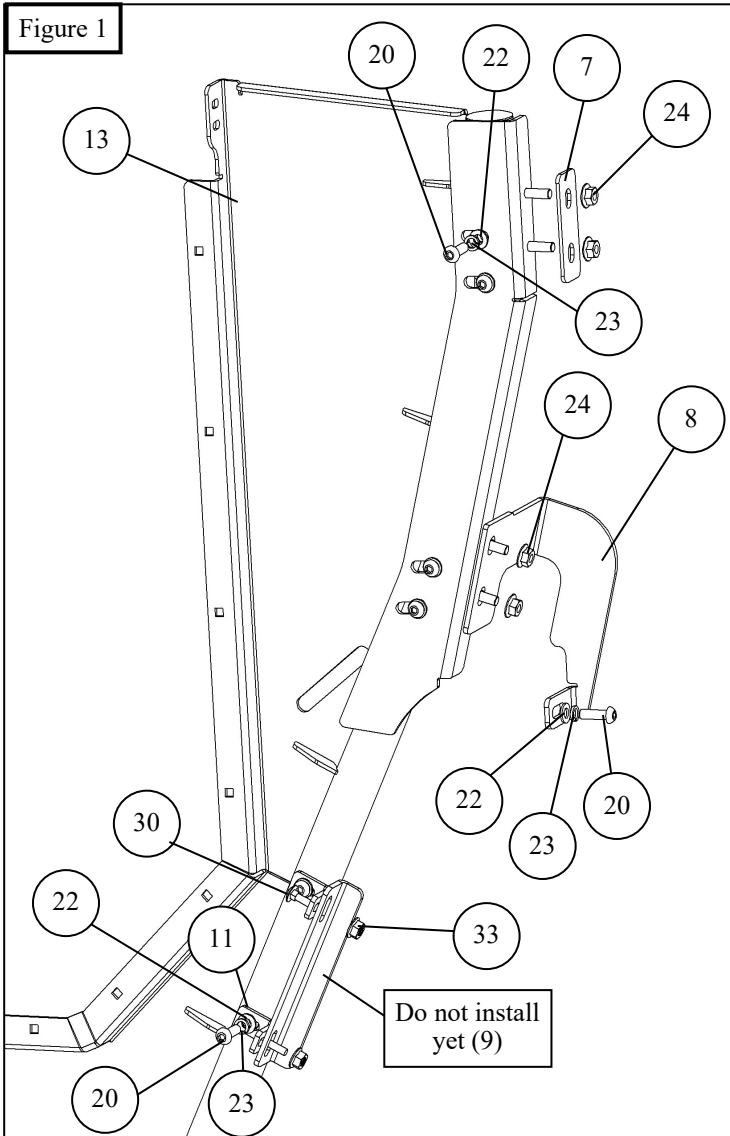
**ANTI-SEIZE LUBRICANT MUST BE USED ON ALL STAINLESS STEEL FASTENERS TO PREVENT THREAD DAMAGE AND GALLING**



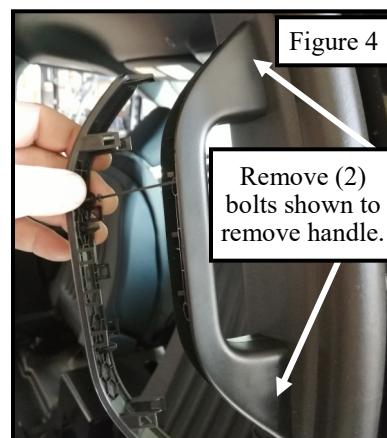
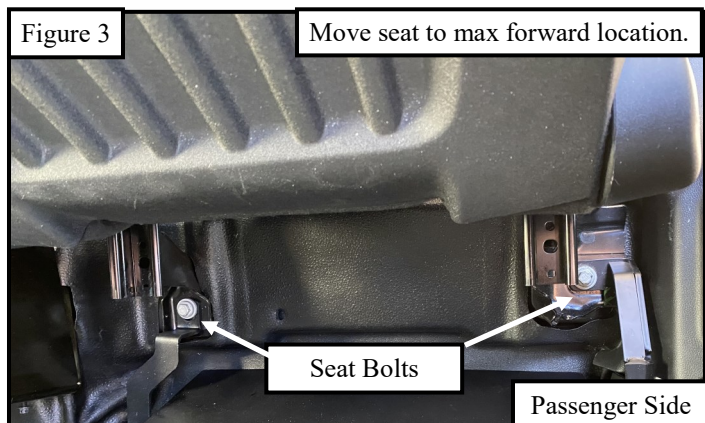
## PROCEDURE

1. Remove contents from box, verify if all parts listed are present and free from damage. Carefully read and understand all instructions before attempting installation.  
**Failure to identify damage before installation could lead to a rejection of any claim.**

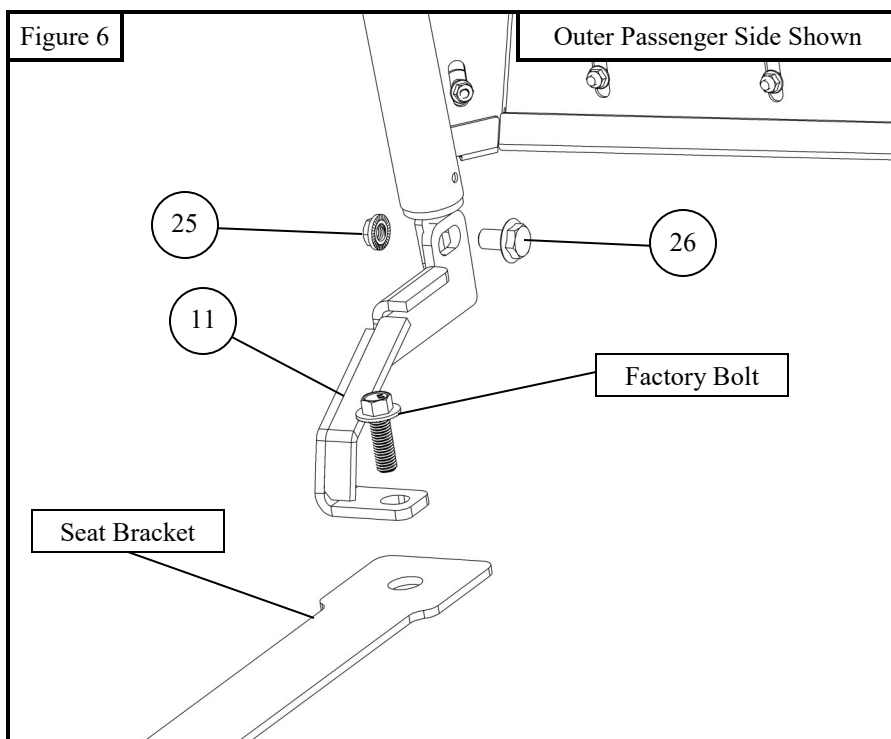
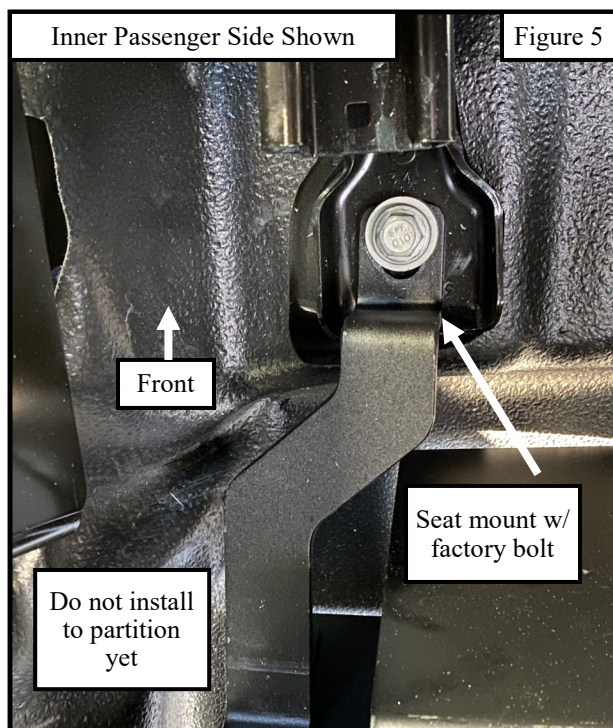
2. Locate the side assembly, upper rear mounting bracket, and upper rear mounting plate. Using supplied M8 hardware, loosely assemble the partition side to the upper part of the rear partition frame. **Note: If the poly window is installed, drill holes through the window to bolt up the brackets. See Figure 1-2**



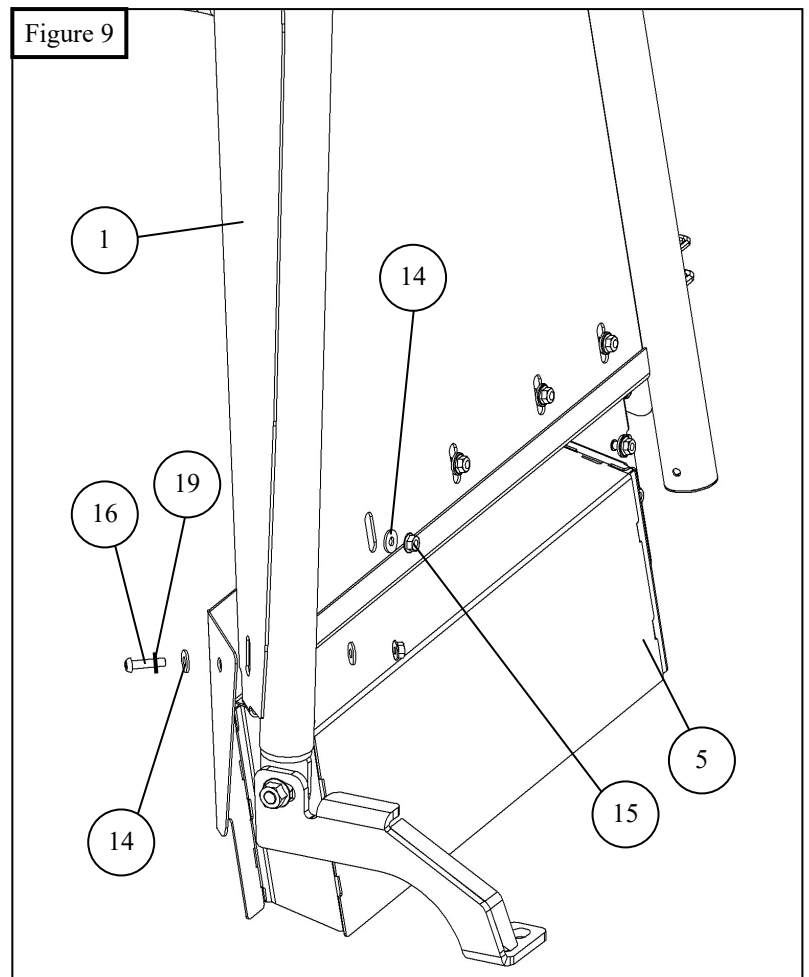
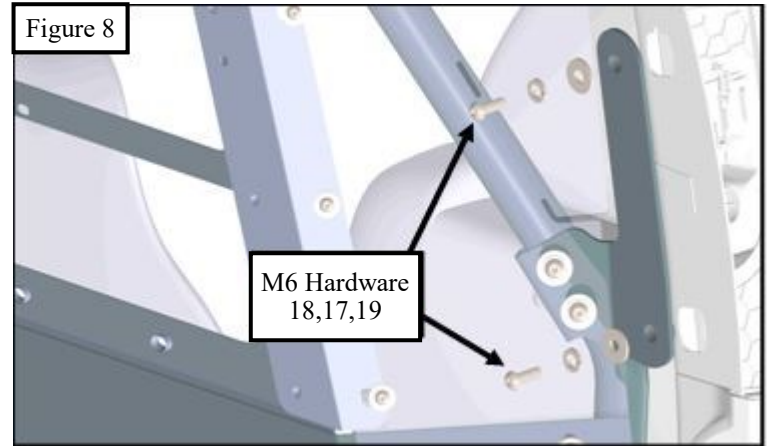
3. Move both front seats to their furthest front location to expose rear seat bolts. See **Figure 3**.
4. Remove rear passenger handle by removing the (2) bolts. See **Figure 4**.



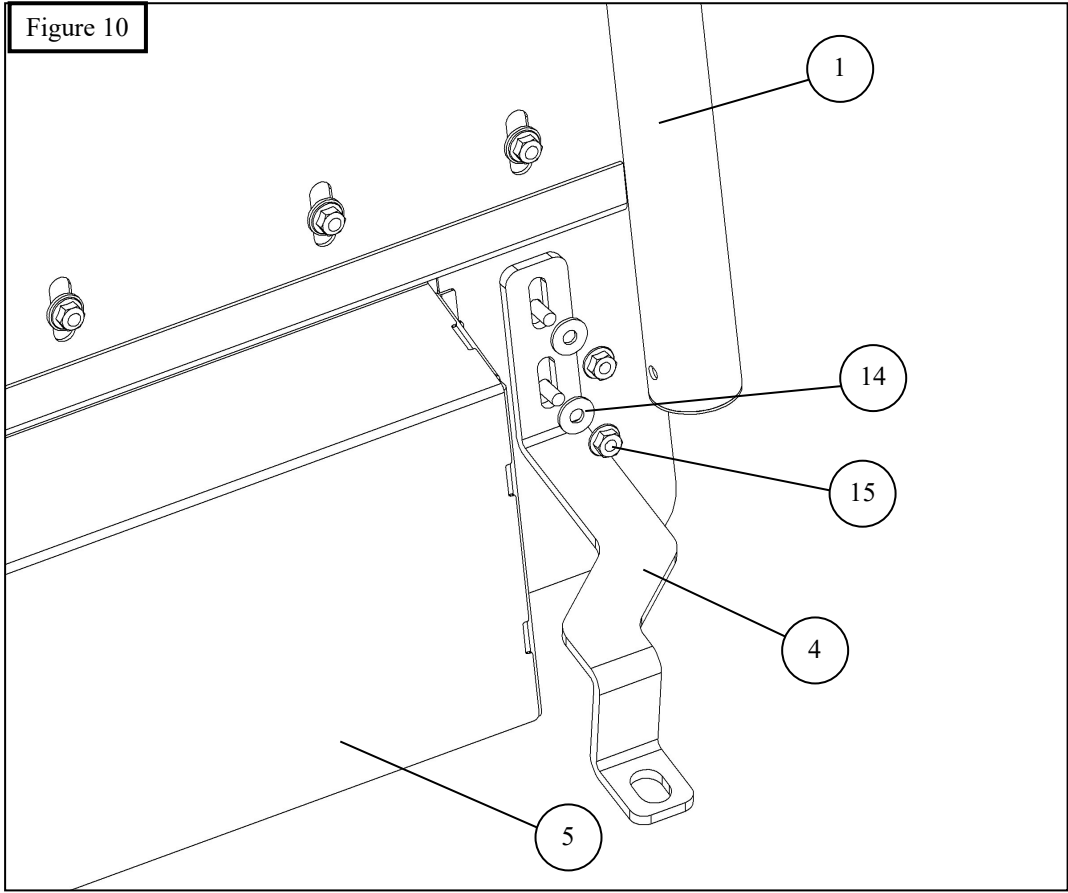
5. Starting on either side, locate (1) inner mounting bracket and (1) outer mount bracket . Loosely secure onto the seat mount underneath the seat re-using the factory seat bolt. See **Figures 5 and 6**. Repeat for other side.
6. Locate partition assembly (Item 1) and with assistance carefully insert into vehicle. Loosely secure onto the previously installed outer mount bracket using the provided M10 hex head serrated flange bolt . See **Figure 6**



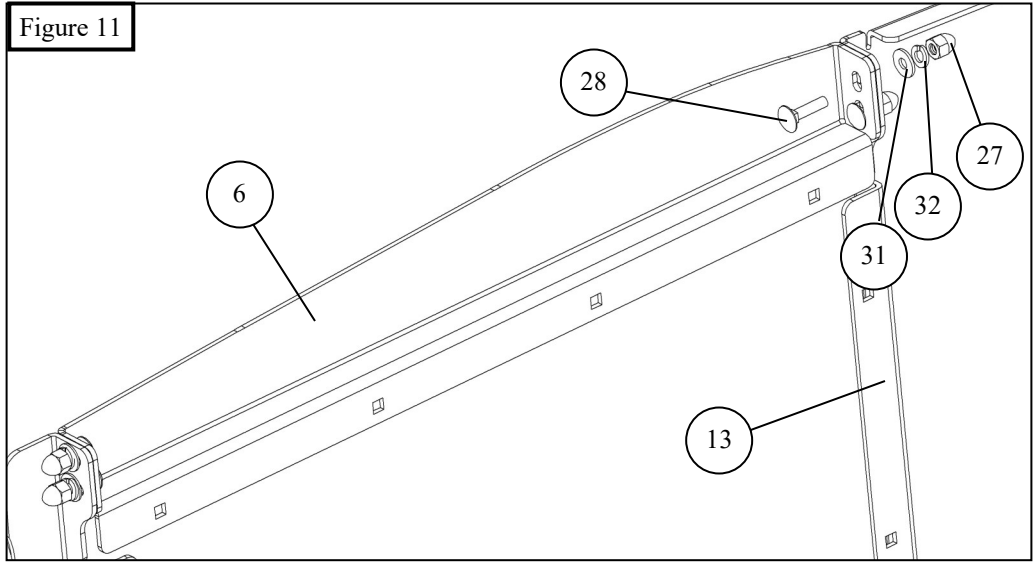
6. Loosen air bag side relief plastics and attach upper mount brackets using hardware 15-17. Between frame and air bag side relief plastics. See figure 7 and 8. Leave them loose at this time.
7. Loosely secure the upper mount brackets (Item 2) onto the vehicle where the handles were removed using the provided M6 hardware. See **Figure 7-8**.
8. Tighten the hardware near the upper mount bracket (Item 2) on the partition assembly (Item 1). Tighten the hardware near the upper mount bracket, air bag relief plastic, and air bag relief bracket onto the partition assembly. See **Figure 7-8**.
9. Locate the foot pocket (Item 5). Using supplied M6 hardware, loosely assemble the foot pocket to the partition. See **Figure 9**.



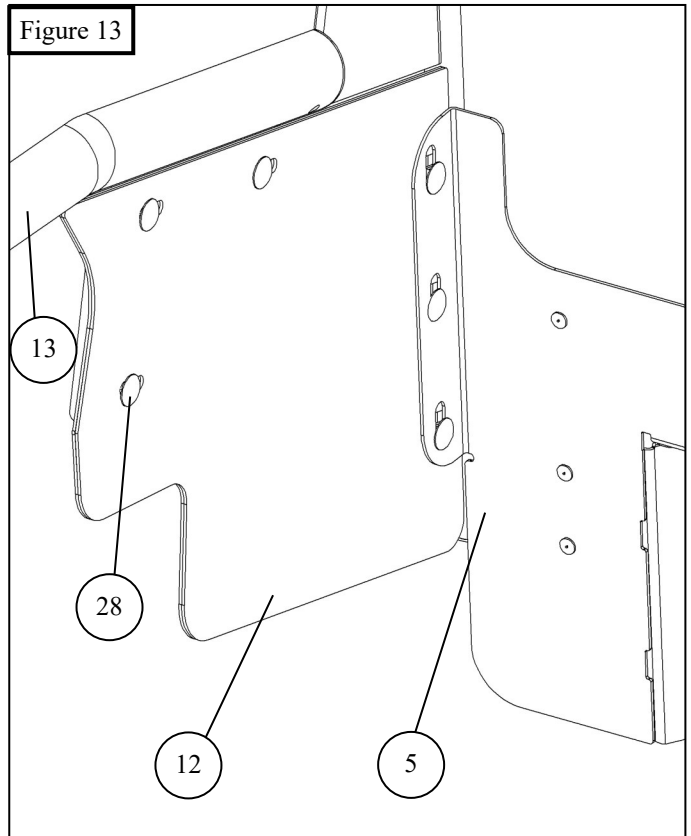
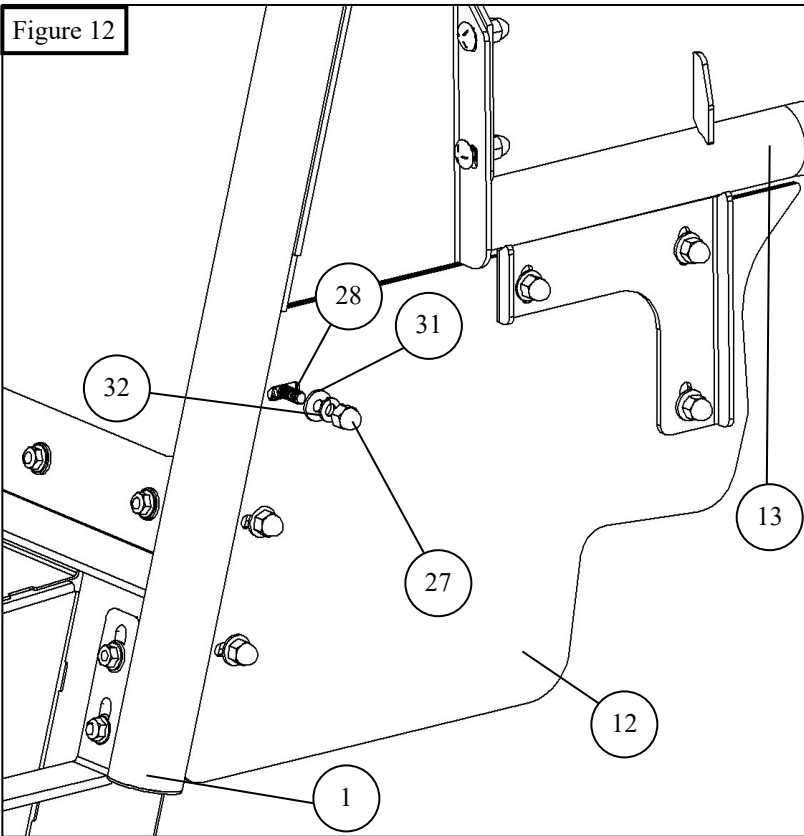
10. Using supplied M8 hardware, loosely assemble the mounting strap (Item 4) to the foot pocket. See Figure 10.



11. Locate the upper cross frame. Using supplied 1/4" hardware, loosely assemble the upper cross brace to the partition assembly. See Figure 11

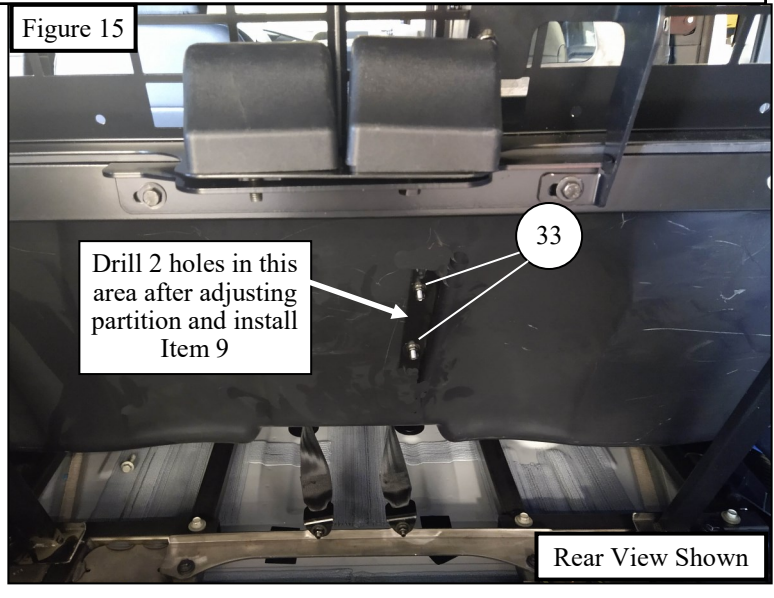
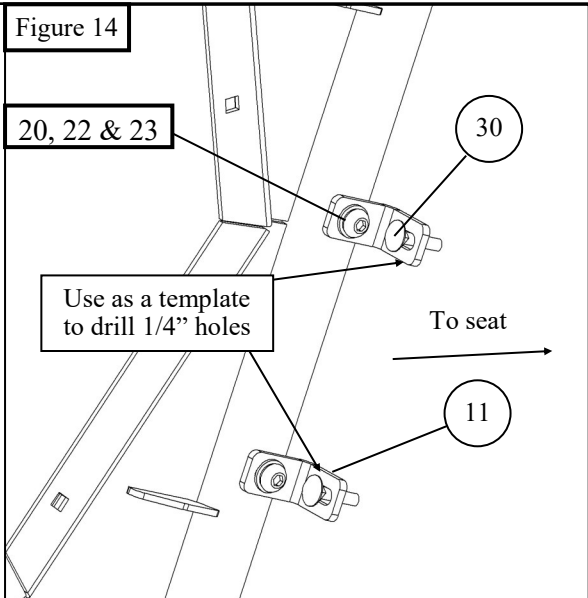


12. Locate the filler plate (Item 12). Using supplied 1/4" hardware, loosely assemble the filler plate to the front partition and side partition assembly. See Figure 12-13



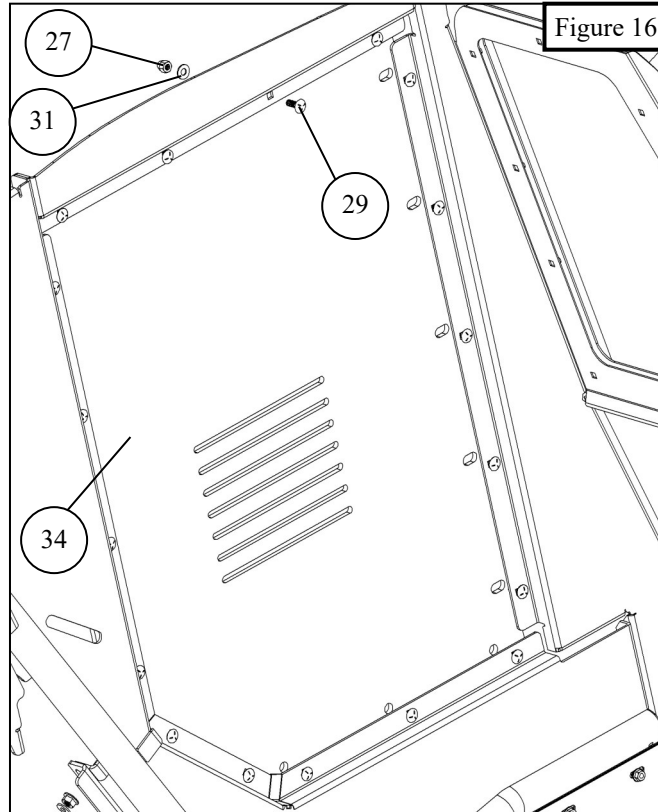
13. Adjust the partition assembly as needed. Snug the hardware just enough to hold. Install the bottom inner mounting brackets (11) using M8 hardware (20, 22 & 23) to 13, then use them as templates to drill two holes into the prisoner seat. See Figure 14-15

- 14. Using supplied 1/4" (30 & 33) hardware, assemble the middle rear mounting bracket (Item 9) on the back side of the prisoner seat as shown in Figures 1-2 and 15
- 15. Align and adjust the partition assembly and then tighten hardware to: M8 hardware to 15-18 ft-lbs, M6 hardware to 5-7 ft-lbs, and M10 hardware to 30-35 ft-lbs.



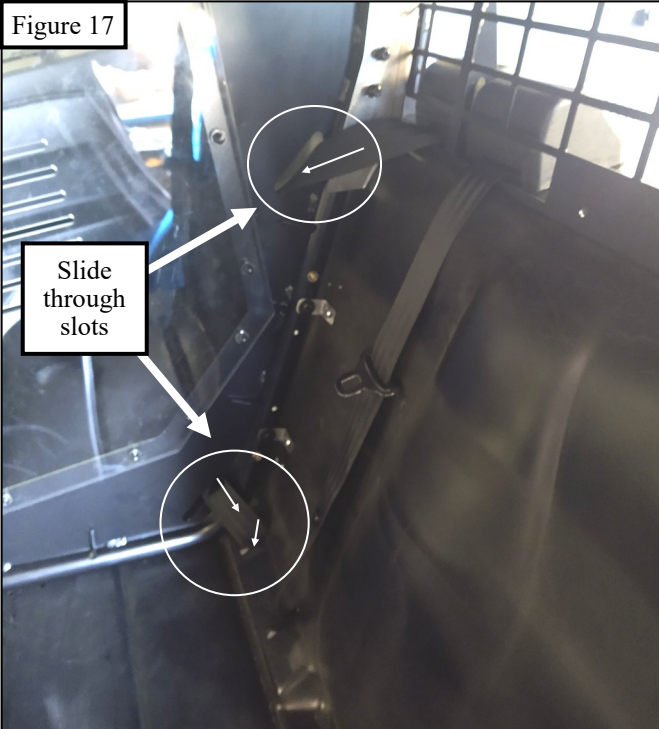
16. Locate the side window. Using supplied 1/4" hardware, install the side window (Item 34) to the side partition assembly. See **Figure 16**.

17. Torque 1/4" hardware to 5-6 ft-lbs.



18. Route the passenger seatbelt through the upper and lower slots as shown in **Figures 17 & 18**

19. Route the seatbelt end plate into the prisoner seat slot and install it per prisoner seat instructions.





INSTALLATION COMPLETE



#### CARE INSTRUCTIONS

- REGULAR WAXING IS RECOMMENDED. DO NOT USE ANY TYPE OF POLISH OR WAX THAT MAY CONTAIN ABRASIVES.
- STAINLESS STEEL PRODUCTS CAN BE CLEANED WITH MILD SOAP AND WATER. STAINLESS STEEL POLISH SHOULD BE USED TO POLISH SMALL SCRATCHES.
- GLOSS BLACK FINISHES SHOULD BE CLEANED WITH MILD SOAP AND WATER.

**WESTIN** Westin Automotive Products, Inc.  
320 W. Covina Blvd  
San Dimas, Ca. 91773

P.N.: 75-35220455-RevB

ECO #: W22-0007

9

Thank you for choosing Westin products  
for additional installation assistance please call  
Customer Service (800) 793-7846

[www.westinautomotive.com](http://www.westinautomotive.com)

DATE: 01/25/2022



## WARNING



Failure to follow these instructions could lead to death, personal injury, and / or property damage.

Failure to follow these instructions could lead to death, personal injury, and / or property damage.

### FASTENERS:

All Westin supplied fasteners must be utilized and installed in accordance with the installation instructions and apply torque to the specifications as defined. **DOUBLE CHECK ALL FASTENERS BEFORE INITIAL USE, AND PERIODICALLY IN THE FUTURE TO ENSURE PROPER FUNCTION AND SAFETY.**

### DRILLING:

Most Westin products do not require drilling for installation. If drilling is defined as required, use caution when drilling a vehicle. **FAILURE TO REVIEW AN AREA TO BE DRILLED MAY RESULT IN PERSONAL INJURY AND/OR INJURY TO OTHERS AS WELL AS VEHICLE DAMAGE.**

### EYE PROTECTION:

**ALWAYS WEAR SAFETY GLASSES OR GOGGLES DURING THE INSTALLATION PROCESS TO AVOID PERSONAL INJURY.**

### MAXIMUM TOWING/CARRYING CAPACITY: (if applicable)

The Westin Receiver Hitches will have a visible tow rating label affixed directly on the product. User should never exceed the vehicle manufacturers maximum tow and weight rating regardless of the capacity of the hitch. **FAILURE TO FOLLOW THESE GUIDELINES WILL VOID THE WESTIN WARRANTY AND MAY RESULT IN PERSONAL INJURY AND/OR INJURY TO OTHERS AS WELL AS VEHICLE DAMAGE.**

### FOR CALIFORNIA RESIDENTS ONLY-PROP 65 WARNING:

Some products may contain chemicals such as DEHP, which can cause cancer, birth defects or other reproductive harm. For more info go to [www.p65warnings.ca.gov](http://www.p65warnings.ca.gov)



Westin Automotive Products, Inc.  
320 W. Covina Blvd  
San Dimas, Ca. 91773