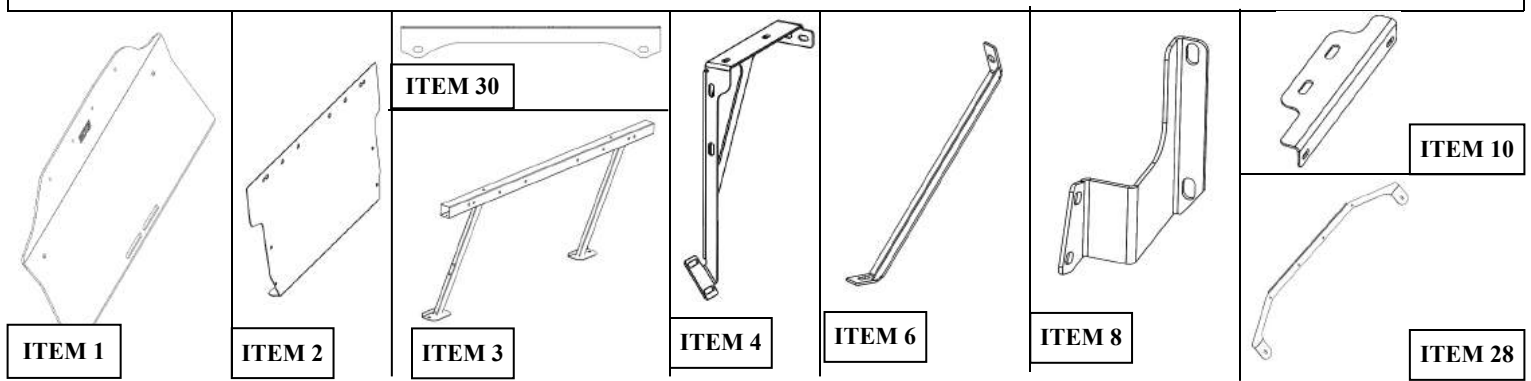


## INSTALLATION INSTRUCTIONS

DEFENDER POLY REAR PARTITION  
 APPLICATION: 2020-2021 FORD POLICE INTERCEPTOR UTILITY  
 PART NUMBER: 35-220452

ITEM	QUANTITY	DESCRIPTION	TOOLS NEEDED
1	1	REAR GUARD WINDOW	10MM SOCKET
2	1	FILLER PANEL	13MM SOCKET
3	1	FRAME	15MM SOCKET
4,5	2	SUPPORT BRACKET, DRIVER (4) AND PASSENGER (5)	13MM WRENCH
6, 7	2	SUPPORT STRAP DRIVER (6) AND PASSENGER (7)	4MM ALLEN WRENCH
8, 9	2	INNER SUPPORT BRACKET DRIVER (8) AND PASSENGER (9)	5MM ALLEN WRENCH
10	1	SEAT BELTS SUPPORT BRACKET	DRILL BIT
11	8	M6 HEX HEAD BOLT	MOTOR DRILL
12	12	M6 WASHER	CUTTING TOOL
13	8	M6 LOCK WASHER	SOCKET EXT.
14	4	M6 HEX NUT	RATCHET
15,16	19,2	SHORT(19), LONG(2) M8 HEX HEAD BOLT,	TORQUE WRENCH
17	2	M8 BUTTON HEAD BOLT	
18	4	M8 SERRATED FLANGE HEX NUT	
19	22	M8 FLAT WASHER	
20	22	M8 LOCK WASHER	
21	4	M10 HEX HEAD BOLT	
22	4	M10 FLAT WASHER	
23	4	M10 LOCK WASHER	
24	1	RIV-NUT INSTALL TOOL	
25	1	M8 HEX HEAD BOLT—FOR RIV-NUT INSTALLATION	
26	1	START WASHER —FOR RIV-NUT INSTALLATION	
27	4	M6 U-CLIP	
28	1	SUPPORT CROSS BAR	
29	4	M8 RIVCERTS	
30	1	LOWER CROSS BAR	

**ANTI-SEIZE LUBRICANT MUST BE USED ON ALL STAINLESS STEEL FASTENERS TO PREVENT THREAD DAMAGE AND GALLING**



## PROCEDURE

1. Remove contents from box, verify if all parts listed are present and free from damage. Carefully read and understand all instructions before attempting installation.  
**Failure to identify damage before installation could lead to a rejection of any claim.**

2. Remove floor covers in the cargo area.
3. Remove the screws that holds the foam blocks. Save them for re-installation (Figure 1) and remove the far rear foam blocks. Save them they will be placed back later.
4. Remove the plastic plugs that hold the plate and the electronic connections to the foam block and pull up the foam block from the back. See Figure 2 and 3



5. Then remove the block from the vehicle
6. Trim the foam block 3 3/4" as shown in Figure 4.



7. If installing the rear partition with the factory seats, remove 2 bolts behind the rear seats. Figure 5.
8. If installing with our prisoner seat 35-14045 remove the 12 bolts that hold the seats and save them, disconnect sensors and carefully remove all the rear seats. Figures 6 & 7. Each factory belt after removed from the oem seat must be plugged back in the same exact seating location where the belt came out from, you can not mix the locations up. Do one belt removal from the oem seat at a time and plug back into it's original location, failure to do so will continue to alert the dash that a sensor is unhooked.

Figure 5

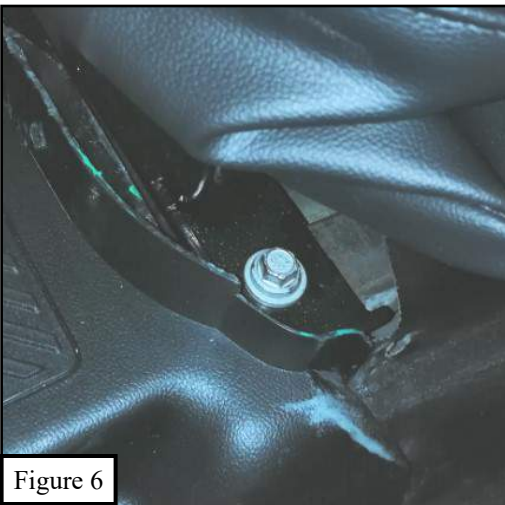


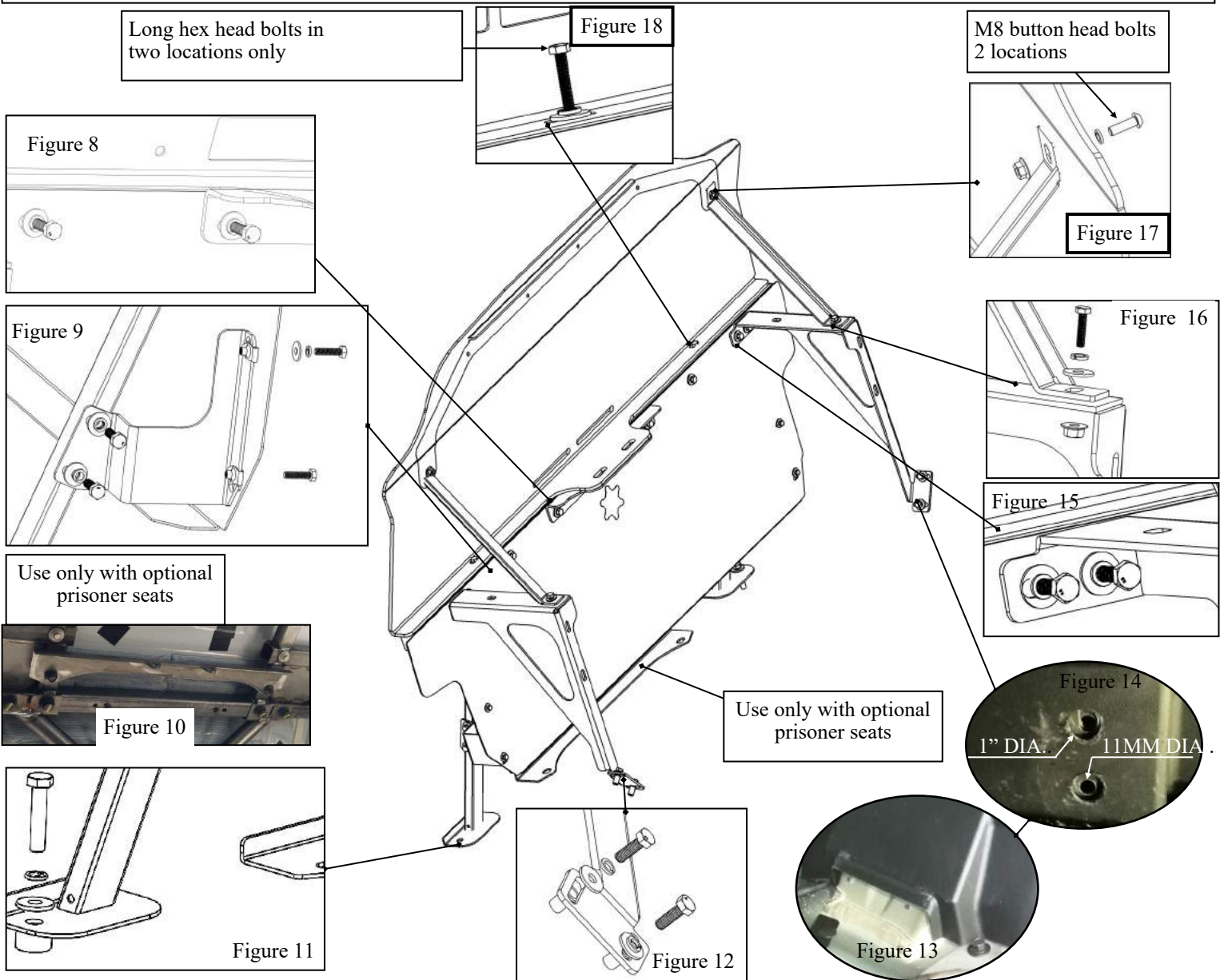
Figure 6



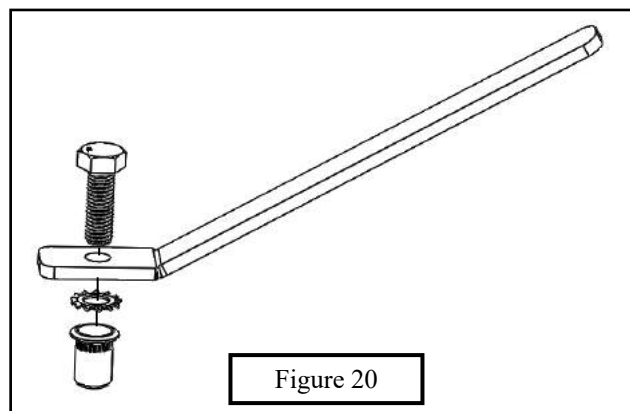
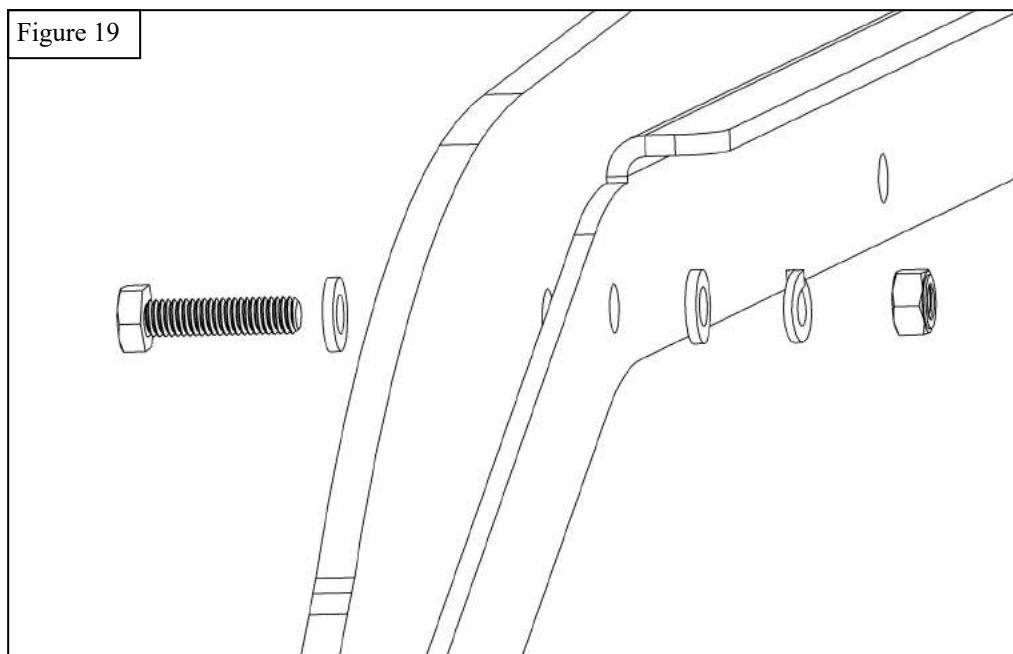
Figure 7

9. Using 4 M10 flange bolts (20) install the frame (3) at the same location where rear seat bolts were removed (Figure 10) Leave them loose for now.
10. Reinstall the foam blocks that were removed and trimmed at steps 3, 4.
11. Install inner support brackets to the frame using M8 hardware (15, 19, and 20). Figure 9. Leave them loose for now. Place M6 u-clips on slots. Figure 9.

12. Install Filler panel (2) and Seat Belt Bracket (10) using M8 hardware (15,19, 20). Figure 8. Use M6 hardware (11, 12, 13) to hold the filler panel into inner support bracket (8 & 9) and into the M6 U-clips (26) Figure 9.
13. Install support brackets (4 & 5) using M8 hardware, to the frame and filler panel. Figure 15.
14. Use a marker to mark where two holes are going to be needed at the bottom flange with slots on the Support brackets (4 & 5) and on top of the plastic panels to tighten brackets down on both sides. Figures 12, 13, and 14. **Look under the plastic panel and make sure that it is marked in top of the metal (Figures 13 & 14). 1st use 1 inch hole saw to drill the plastic panel only (Figure 14).** Then carefully drill 11mm holes in the metal. **Note: Be sure to drill to 2 layers deep of metal only**
15. Install the Riv-nuts using the Riv-nut install tool , M8 hex head bolt and the M8 start washer **Figure 20 in page 5.** Then use M8 hardware to hold the brackets down. Figure 12.
16. Install upper support cross bar (28) to the rear window guard (1) using M6 hardware 11, 12, 13, and 14. **Figure 19 Page 5.**
17. **If the prisoner seat 35-14045 will be installed, use M8 hardware 16, 19, 20 Proceeded to the install sheet for the seat 35-14045. Install the supplied lower cross bar (30) using the manufacturing bolts. Figure 10.** Attach seat belts strap plates to the lower cross bar. If prisoner seats are not being installed, discard the lower cross bar.



19. Install Rear guard Window (1) in top of prisoner seat using M8 hardware 16, 19, and 20. Figure 17.
20. Install the support straps (6 & 7) using M8 hardware (17, 18, 19, and 20) at the top area Figure 16. Use M8 hardware (15, 18, 19 & 20) at the support brackets (4 & 5) area. Figure 15.
21. Align and adjust as necessary then tighten hardware, M8 hardware to 15-18 ft-lbs., M6 hardware to 5-7 ft-lbs, and M10 hardware to 30-35 ft-lbs.



Installation Complete

Images show rear partition installed with Defender Electrical Panel 35-120451, Defender Poly Window 35-120452 and Defender Prisoner Seat 35-14045.



CARE INSTRUCTIONS

- REGULAR WAXING IS RECOMMENDED. DO NOT USE ANY TYPE OF POLISH OR WAX THAT MAY CONTAIN ABRASIVES.
- STAINLESS STEEL PRODUCTS CAN BE CLEANED WITH MILD SOAP AND WATER. STAINLESS STEEL POLISH SHOULD BE USED TO POLISH SMALL SCRATCHES.
- GLOSS BLACK FINISHES SHOULD BE CLEANED WITH MILD SOAP AND WATER.

**WESTIN** Westin Automotive Products, Inc.  
320 W. Covina Blvd  
San Dimas, Ca. 91773

Thank you for choosing Westin products  
for additional installation assistance please call  
Customer Service (800) 793-7846  
[www.westinautomotive.com](http://www.westinautomotive.com)



## WARNING



Failure to follow these instructions could lead to death, personal injury, and / or property damage.

Failure to follow these instructions could lead to death, personal injury, and / or property damage.

### FASTENERS:

All Westin supplied fasteners must be utilized and installed in accordance with the installation instructions and apply torque to the specifications as defined. **DOUBLE CHECK ALL FASTENERS BEFORE INITIAL USE, AND PERIODICALLY IN THE FUTURE TO ENSURE PROPER FUNCTION AND SAFETY.**

### DRILLING:

Most Westin products do not require drilling for installation. If drilling is defined as required, use caution when drilling a vehicle. **FAILURE TO REVIEW AN AREA TO BE DRILLED MAY RESULT IN PERSONAL INJURY AND/OR INJURY TO OTHERS AS WELL AS VEHICLE DAMAGE.**

### EYE PROTECTION:

**ALWAYS WEAR SAFETY GLASSES OR GOGGLES DURING THE INSTALLATION PROCESS TO AVOID PERSONAL INJURY.**

### MAXIMUM TOWING/CARRYING CAPACITY: (if applicable)

The Westin Receiver Hitches will have a visible tow rating label affixed directly on the product. User should never exceed the vehicle manufacturers maximum tow and weight rating regardless of the capacity of the hitch. **FAILURE TO FOLLOW THESE GUIDELINES WILL VOID THE WESTIN WARRANTY AND MAY RESULT IN PERSONAL INJURY AND/OR INJURY TO OTHERS AS WELL AS VEHICLE DAMAGE.**

### FOR CALIFORNIA RESIDENTS ONLY-PROP 65 WARNING:

Some products may contain chemicals such as DEHP, which can cause cancer, birth defects or other reproductive harm. For more info go to [www.p65warnings.ca.gov](http://www.p65warnings.ca.gov)