



INSTALLATION INSTRUCTIONS

DEFENDER REAR PARTITION

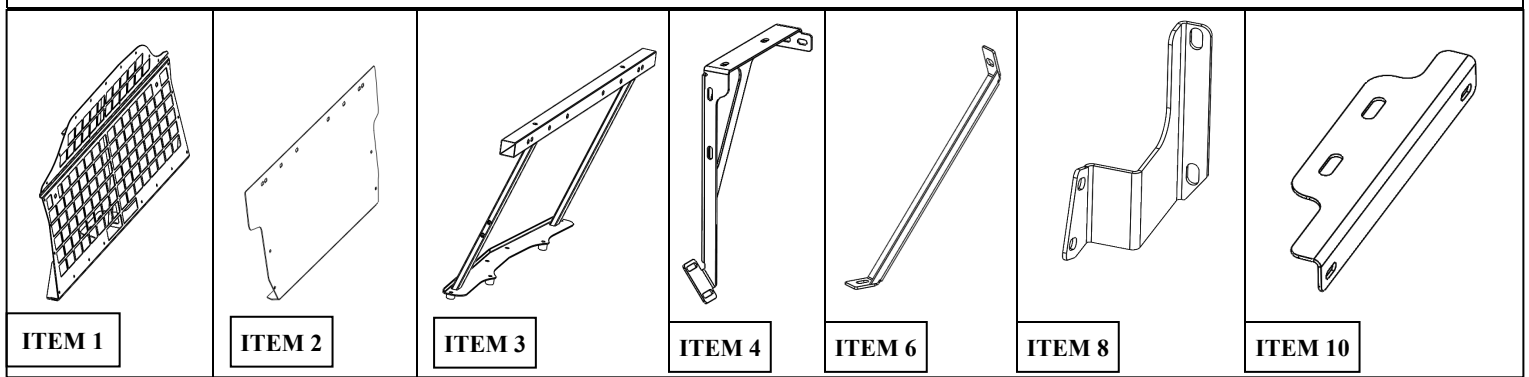
APPLICATION:

FORD 2020 POLICE INTERCEPTOR UTILITY

PART NUMBER: 35-12045

ITEM	QUANTITY	DESCRIPTION	TOOLS NEEDED
1	1	REAR GUARD SCREEN	13MM SOCKET
2	1	FILLER PANEL	15MM SOCKET
3	1	FRAME	13MM WRENCH
4,5	2	SUPPORT BRACKET, DRIVER (4) AND PASSENGER (5)	4MM ALLEN WRENCH
6, 7	2	SUPPORT STRAP DRIVER (6) AND PASSENGER (7)	5MM ALLEN WRENCH
8, 9	2	INNER SUPPORT BRACKET DRIVER (8) AND PASSENGER (9)	DRILL BIT
10	1	SEAT BELTS SUPPORT BRACKET	MOTOR DRILL
11	4	M6 HEX HEAD BOLT	CUTTING TOOL
12	4	M6 WASHER	SOCKET EXT.
13	4	M6 LOCK WASHER	RATCHET
14	18	SHORT M8 HEX HEAD BOLT	TORQUE WRENCH
15	2	LONG M8 HEX HEAD BOLT	
16	22	M8 FLAT WASHER	
17	22	M8 LOCK WASHER	
18	4	M10 HEX HEAD BOLT	
19	4	M10 LOCK WASHER	
20	4	M8 SERRATED FLANGE NUT	
21	2	M8 BUTTON HEAD BOLTS	
22	4	M8 RIV-NUT	
23	1	RIV-NUT INSTALL TOOL	
24	1	M8 HEX HEAD BOLT—FOR RIV-NUT INSTALLATION	
25	1	START WASHER —FOR RIV-NUT INSTALLATION	
26	4	M6 U CLIP	
27	4	M10 FLAT WASHER	

ANTI-SEIZE LUBRICANT MUST BE USED ON ALL STAINLESS STEEL FASTENERS TO PREVENT THREAD DAMAGE AND GALLING



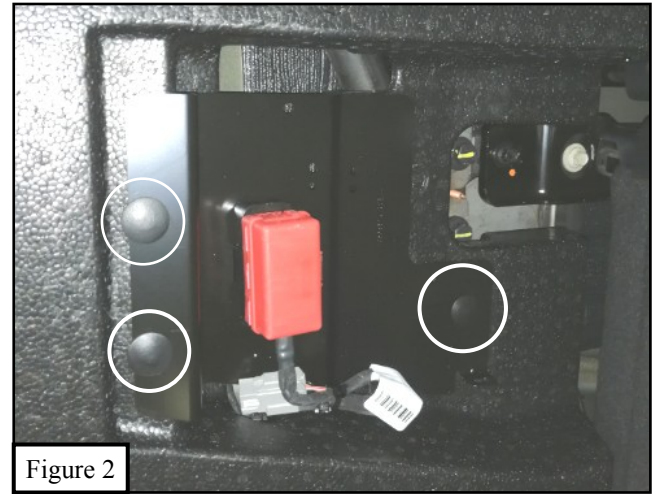
WESTIN Westin Automotive Products, Inc.
320 W. Covina Blvd
San Dimas, Ca. 91773

Thank you for choosing Westin products
for additional installation assistance please call
Customer Service (800) 793-7846

PROCEDURE

1. Remove contents from box, verify if all parts listed are present and free from damage. Carefully read and understand all instructions before attempting installation.
Failure to identify damage before installation could lead to a rejection of any claim.

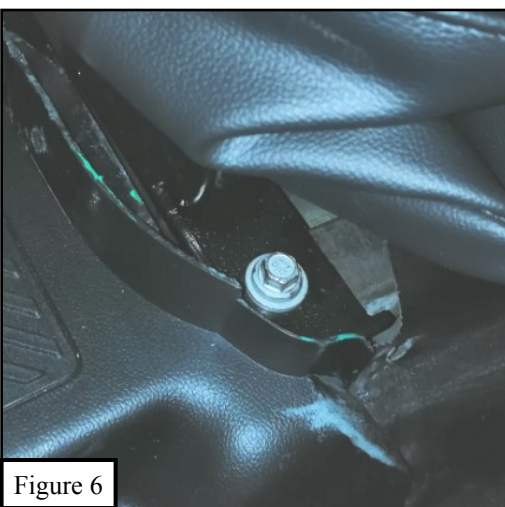
2. Remove floor covers in the cargo area.
3. Remove the screws that holds the foam blocks. Save them for re-installation (Figure 1) and remove the far rear foam blocks. Save them they will be placed back later.
4. Remove the plastic plugs that hold the plate and the electronic connections to the foam block and pull up the foam block from the back. See Figure 2 and 3



5. Then remove the block from the vehicle
6. Trim the foam block 3 3/4" as shown in Figure 4.

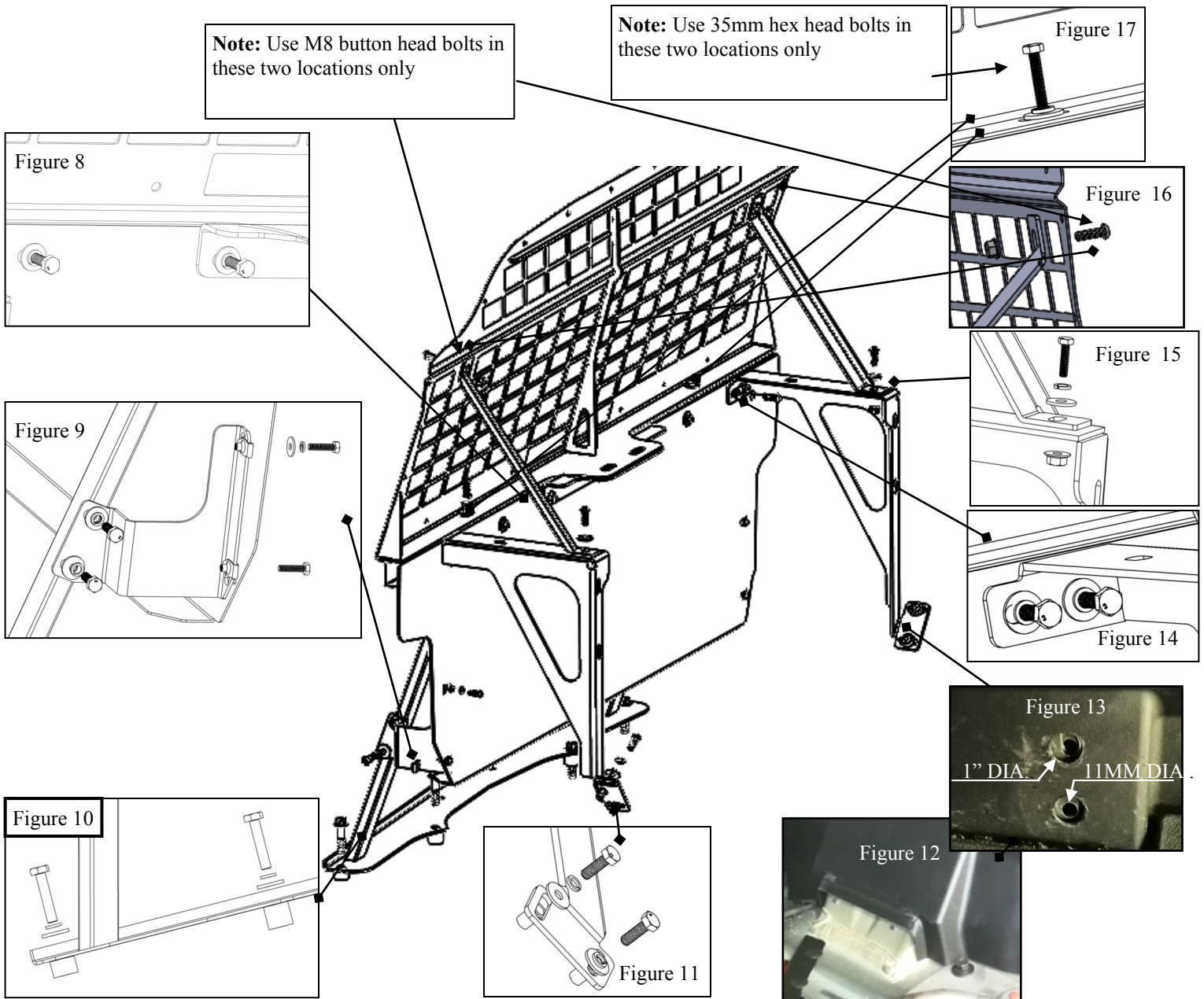


7. If installing the rear partition with the factory seats, remove the 6 bolts behind the rear seats. Figure 5.
8. If installing with our prisoner seat 35-14045 remove the 12 bolts that hold the seats, disconnect sensors and carefully remove all the rear seats. Figures 6 & 7. Each factory belt after removed from the oem seat must be plugged back in the same exact seating location where the belt came out from, you can not mix the locations up. Do one belt removal from the oem seat at a time and plug back into it's original location, failure to do so will continue to alert the dash that a sensor is unhooked.



9. Using M10 Hardware, install the frame (3) at the same location where rear seat bolts were removed (Figure 10) Leave them loose for now.
10. Reinstall the foam blocks that were removed and trimmed at steps 3, 4.
11. Install inner support brackets to the frame using M8 hardware (14, 16, and 17). Figure 9. Leave them loose for now. Place M6 u-clips on slots. Figure 9.

12. Install Filler panel (2) and Seat Belt Bracket (10) using M8 hardware (14, 16, and 17). Figure 8. Use M6 hardware (11, 12, 13) to hold the filler panel into inner support bracket (8 & 9) and into the M6 U-clips (26) Figure 9.
13. Install support brackets (4 & 5) using M8 hardware (14, 16, and 17), to the frame and filler panel. Figure 14.
14. Use a marker to mark where two holes are going to be needed at the bottom flange with slots on the Support brackets (4 & 5) and on top of the plastic panels to tighten brackets down on both sides. Figures 11, 12, and 13. **Look under the plastic panel and make sure that it is marked in top of the metal (Figures 12 & 13). 1st use 1 inch hole saw to drill the plastic panel only (Figure 13).** Then carefully drill 11mm holes in the metal. **Note: Be sure to drill to 2 layers deep of metal only**
15. Install the Riv-nuts (22) using the Riv-nut install tool (23), M8 hex head bolt (24) and the M8 start washer (25) **Figure 18 in page 5.** Then use M8 hardware (14, 16, and 17) to hold the brackets down. Figure 12
16. **If the prisoner seat 35-14045 will be installed, use M8 hardware 15, 16 & 17. Proceeded to the install sheet for the seat 35-14045.**



17. Install Rear guard screen using the support straps (6 & 7) and M8 hardware (14, 16, 17 & 20) Figure 16 and M8 hardware (16, 17, 20 & 21) Figure 17.
18. Align and adjust as necessary then tighten hardware, M8 hardware to 15-18 ft-lbs. , M6 hardware to 5-7 ft-lbs, and M10 hardware to 30-35 ft-lbs.

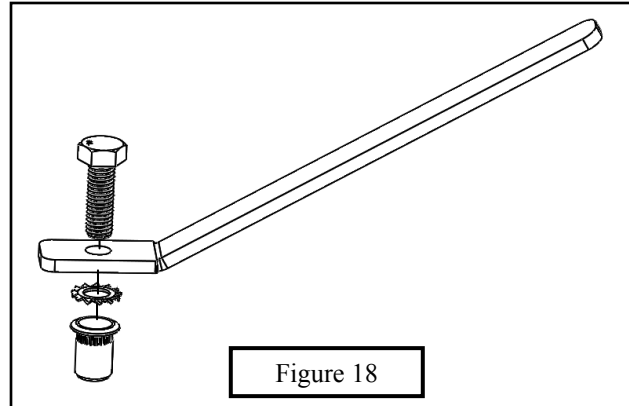


Figure 18

Installation Complete

Images show rear partition installed with Defender Electrical Panel 35-120451, Defender Poly Window 35-120452 and Defender Prisoner Seat 35-14045.



CARE INSTRUCTIONS

- REGULAR WAXING IS RECOMMENDED. DO NOT USE ANY TYPE OF POLISH OR WAX THAT MAY CONTAIN ABRASIVES.
- STAINLESS STEEL PRODUCTS CAN BE CLEANED WITH MILD SOAP AND WATER. STAINLESS STEEL POLISH SHOULD BE USED TO POLISH SMALL SCRATCHES.
- GLOSS BLACK FINISHES SHOULD BE CLEANED WITH MILD SOAP AND WATER.

WESTIN Westin Automotive Products, Inc.
320 W. Covina Blvd
San Dimas, Ca. 91773

Thank you for choosing Westin products
for additional installation assistance please call
Customer Service (800) 793-7846

www.westinautomotive.com

DATE: 04/29/2020



WARNING



Failure to follow these instructions could lead to death, personal injury, and / or property damage.

Failure to follow these instructions could lead to death, personal injury, and / or property damage.

FASTENERS:

All Westin supplied fasteners must be utilized and installed in accordance with the installation instructions and apply torque to the specifications as defined. **DOUBLE CHECK ALL FASTENERS BEFORE INITIAL USE, AND PERIODICALLY IN THE FUTURE TO ENSURE PROPER FUNCTION AND SAFETY.**

DRILLING:

Most Westin products do not require drilling for installation. If drilling is defined as required, use caution when drilling a vehicle. **FAILURE TO REVIEW AN AREA TO BE DRILLED MAY RESULT IN PERSONAL INJURY AND/OR INJURY TO OTHERS AS WELL AS VEHICLE DAMAGE.**

EYE PROTECTION:

ALWAYS WEAR SAFETY GLASSES OR GOGGLES DURING THE INSTALLATION PROCESS TO AVOID PERSONAL INJURY.

MAXIMUM TOWING/CARRYING CAPACITY: (if applicable)

The Westin Receiver Hitches will have a visible tow rating label affixed directly on the product. User should never exceed the vehicle manufacturers maximum tow and weight rating regardless of the capacity of the hitch. **FAILURE TO FOLLOW THESE GUIDELINES WILL VOID THE WESTIN WARRANTY AND MAY RESULT IN PERSONAL INJURY AND/OR INJURY TO OTHERS AS WELL AS VEHICLE DAMAGE.**

FOR CALIFORNIA RESIDENTS ONLY-PROP 65 WARNING:

Some products may contain chemicals such as DEHP, which can cause cancer, birth defects or other reproductive harm. For more info go to www.p65warnings.ca.gov