

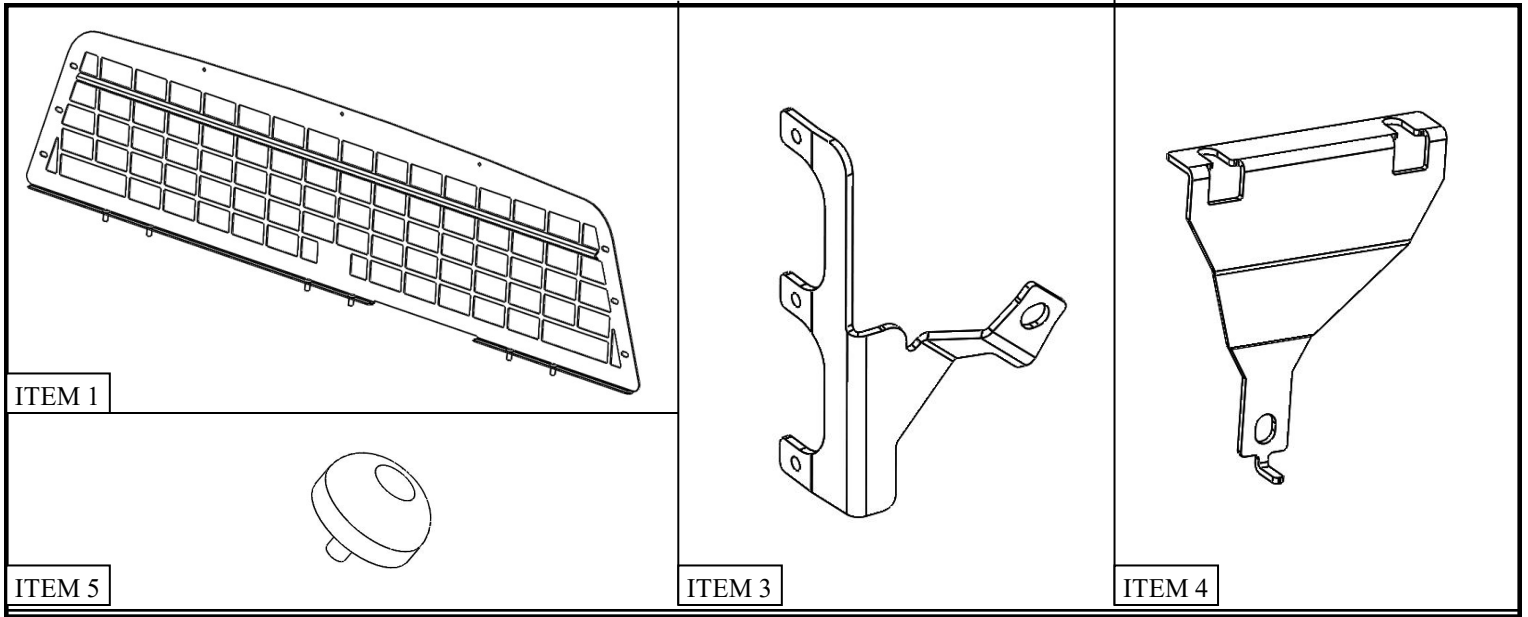
# INSTALLATION INSTRUCTIONS



**DEFENDER REAR WINDOW GUARD**  
**APPLICATION:**  
**FORD F150 POLICE RESPONDER 2018-2019**  
**PART NUMBER:**  
**35-12035**

CONTENT			
ITEM	QUANTITY	DESCRIPTION	TOOLS NEEDED
1	1	REAR WINDOW GUARD	15MM SOCKET
2	1	BRACKET DRIVER SIDE	18MM SOCKET
3	1	BRACKET PASSENGER SIDE	10MM SOCKET
4	3	BOTTOM BRACKET	15MM WRENCH
5	3	RUBBER BUMPER	18MM WRENCH
6	3	#10 A-CORN NUT	10MM WRENCH
7	6	M5 FLAT LARGE WASHER	5MM "ALLEN" WRENCH
8	3	M5 FLAT WASHER	RATCHET
9	6	M6 A-CORN NUT	TORQUE WRENCH
10	6	M6 FLAT WASHER	
11	6	M6 LOCK WASHER	
12	6	M6 FLANGE NUT	
13	3	M8 BUTTON HEAD BOLT	
14	3	M8 FLAT WASHER	
15	3	M8 LOCK WASHER	

**ANTI-SEIZE LUBRICANT MUST BE USED ON ALL STAINLESS STEEL FASTENERS TO PREVENT THREAD DAMAGE AND GALLING**

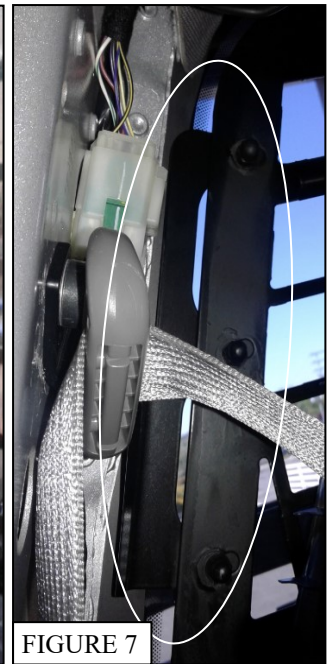
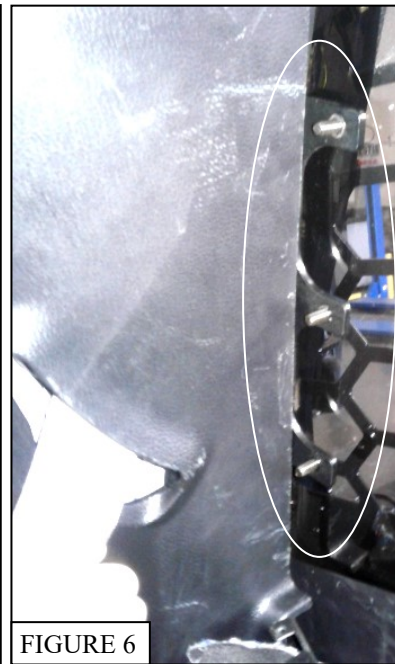
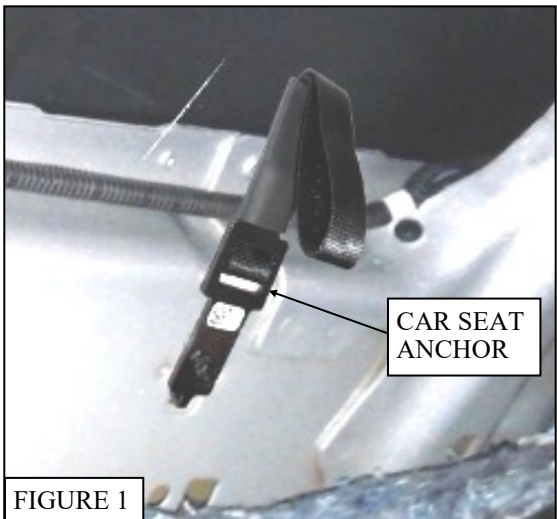


**WESTIN** Westin Automotive Products, Inc.  
 320 W. Covina Blvd  
 San Dimas, Ca. 91773

Thank you for choosing Westin products  
 for additional installation assistance please call  
 Customer Service (800) 793-7846  
 www.westinautomotive.com

## PROCEDURE

1. Remove contents from box, verify if all parts listed are present and free from damage. Carefully read and understand all instructions before attempting installation.  
**Failure to identify damage before installation could lead to a rejection of any claim.**
2. Fold the rear seats to uncover the rear part of the cabin.
3. Pull back the plastic cover and insulation to uncover 3 car seat anchors. See figure 1.
4. Remove the three anchors by removing the M8 bolts and discard them.
5. Install the 3 bottom brackets (4) by using M8 hardware (Supplied 13, 14 and 15) at the same locations where the anchors were installed. Figure 2, 3, 7 and 8. Leave them loose for now.
6. Remove the rear plastic corner panels to uncover the rear seat belts mount locations. Figure 3.
7. Loosen and remove the bolt holding the seat belt and save bolt spacer and washer for reinstallation. Don't remove the hardware from the seat belt. Figure 4.
8. Install side bracket as shown in figure 5. Be sure to clear the electronic parts, seat belt bracket will sit at an angle (figure 5), and align the bracket evenly with the rear window. Bracket should not touch the window. Figures 6 and 7.



**WESTIN**

Westin Automotive Products, Inc.  
320 W. Covina Blvd  
San Dimas, Ca. 91773

9. Install each bumper (5) in the rear window guard (1) using two large M5 washers (7) as spacers (washer spacers are used to add length to create contact between the bumper and the glass window. Use as needed) and one #10 Acorn (6) and one M5 washer (8) as shown in figures 8 and 9.
10. Install the window guard as shown in figures 7, 8 and 9. Use hardware per figure 8.
11. Adjust window where needed.
12. **WARNING: AVOID METAL PARTS TOUCHING THE WINDOW GLASS. NOT DOING THIS MAY CRACK WINDOW.**
13. Tighten and torque hardware to: M8 18-20 ft-lbs, M10 30-35 ft-lbs, M12 to 50-55 ft-lbs.
14. Carefully place back the rear plastic corner panels. Figure 3.

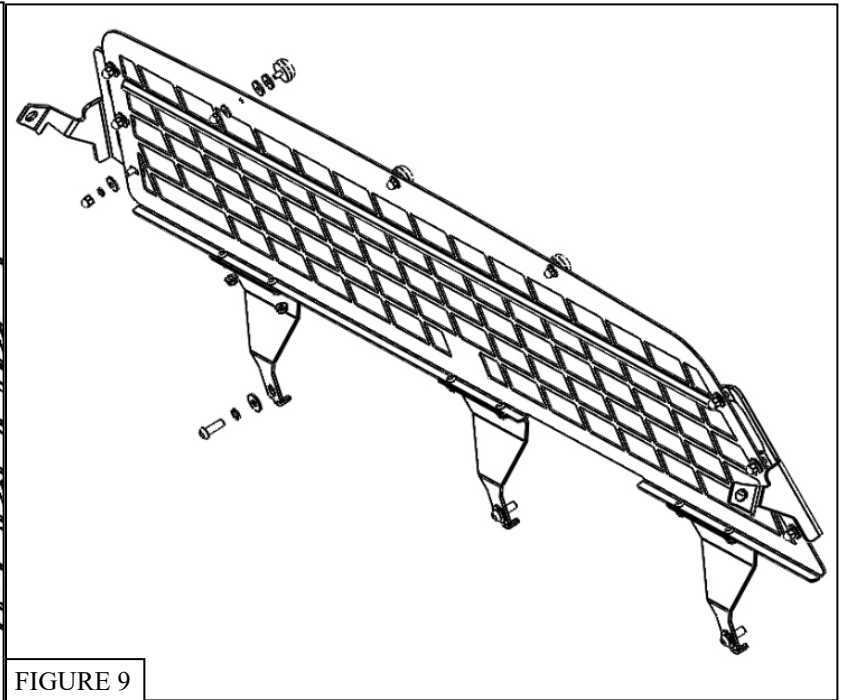
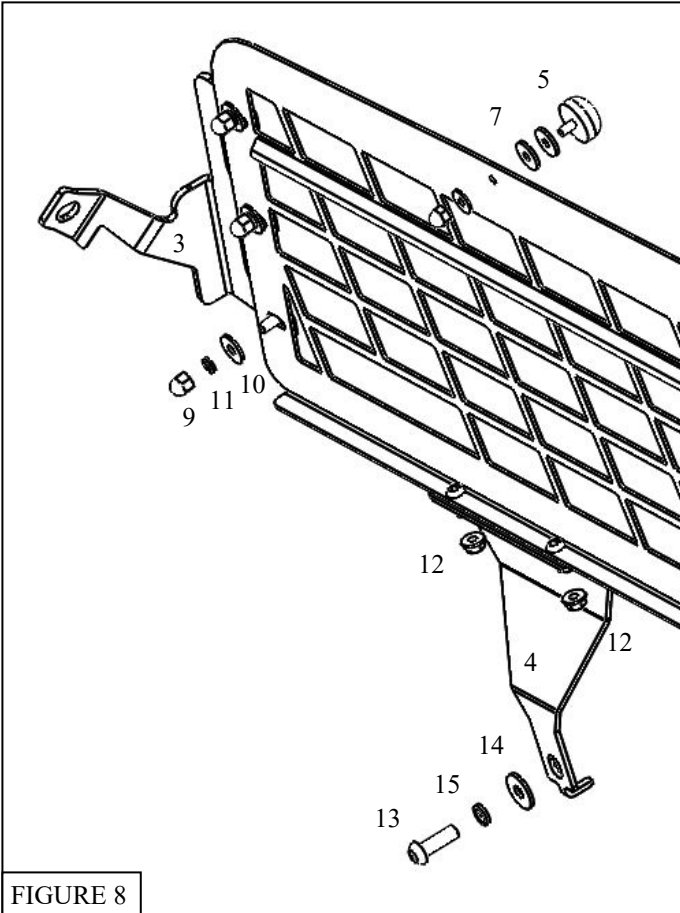


FIGURE 9

**INSTALLATION COMPLETED**



**CARE INSTRUCTIONS**

- REGULAR WAXING IS RECOMMENDED. DO NOT USE ANY TYPE OF POLISH OR WAX THAT MAY CONTAIN ABRASIVES.
- STAINLESS STEEL PRODUCTS CAN BE CLEANED WITH MILD SOAP AND WATER. STAINLESS STEEL POLISH SHOULD BE USED TO POLISH SMALL SCRATCHES.
- GLOSS BLACK FINISHES SHOULD BE CLEANED WITH MILD SOAP AND WATER.



## WARNING



Failure to follow these instructions could lead to death, personal injury, and / or property damage.

Failure to follow these instructions could lead to death, personal injury, and / or property damage.

### FASTENERS:

All Westin supplied fasteners must be utilized and installed in accordance with the installation instructions and apply torque to the specifications as defined. **DOUBLE CHECK ALL FASTENERS BEFORE INITIAL USE, AND PERIODICALLY IN THE FUTURE TO ENSURE PROPER FUNCTION AND SAFETY.**

### DRILLING:

Most Westin products do not require drilling for installation. If drilling is defined as required, use caution when drilling a vehicle. **FAILURE TO REVIEW AN AREA TO BE DRILLED MAY RESULT IN PERSONAL INJURY AND/OR INJURY TO OTHERS AS WELL AS VEHICLE DAMAGE.**

### EYE PROTECTION:

**ALWAYS WEAR SAFETY GLASSES OR GOGGLES DURING THE INSTALLATION PROCESS TO AVOID PERSONAL INJURY.**

### MAXIMUM TOWING/CARRYING CAPACITY: (if applicable)

The Westin Receiver Hitches will have a visible tow rating label affixed directly on the product. User should never exceed the vehicle manufacturers maximum tow and weight rating regardless of the capacity of the hitch. **FAILURE TO FOLLOW THESE GUIDELINES WILL VOID THE WESTIN WARRANTY AND MAY RESULT IN PERSONAL INJURY AND/OR INJURY TO OTHERS AS WELL AS VEHICLE DAMAGE.**

### FOR CALIFORNIA RESIDENTS ONLY-PROP 65 WARNING:

Some products may contain chemicals such as DEHP, which can cause cancer, birth defects or other reproductive harm. For more info go to [www.p65warnings.ca.gov](http://www.p65warnings.ca.gov)



Westin Automotive Products, Inc.  
320 W. Covina Blvd  
San Dimas, Ca. 91773