



# INSTALLATION INSTRUCTIONS

## DEFENDER REAR PARTITION

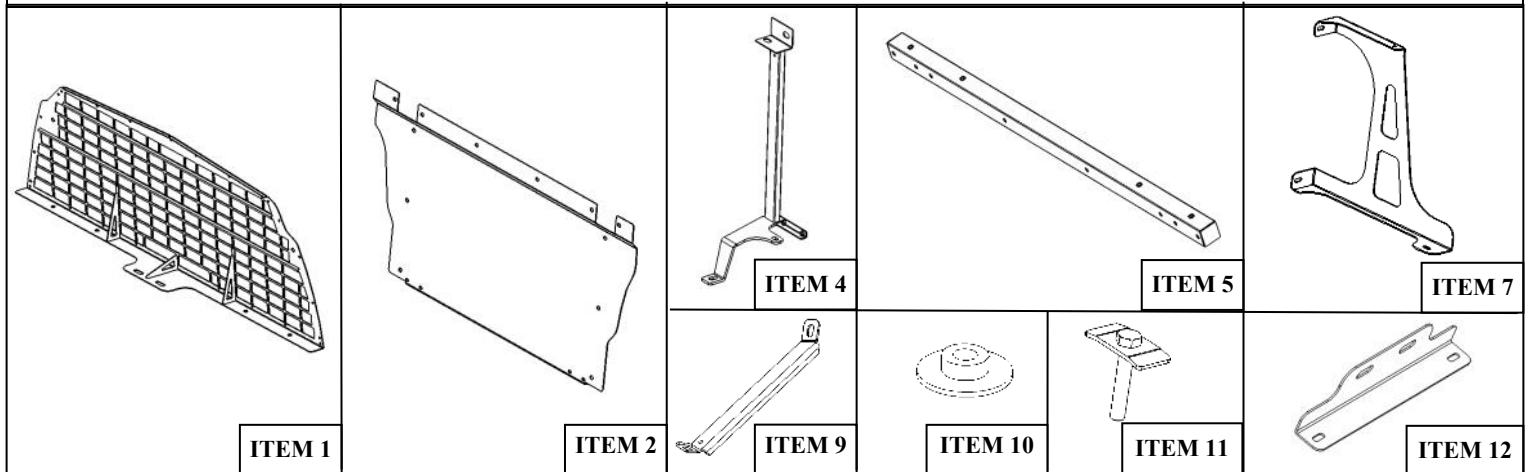
### APPLICATION:

2015-2018 CHEVROLET TAHOE PPV

PART NUMBER: 35-12025

ITEM	QUANTITY	DESCRIPTION	TOOLS NEEDED
1	1	SCREEN GUARD	14MM SOCKET
2	1	FILLER PANEL	15MM SOCKET
3, 4	2	FRAME UPRIGHT DRIVER AND PASSENGER	18MM SOCKET
5	1	FRAME BAR	13MM SOCKET
6, 7	2	UPRIGHT BRACKET DRIVER AND PASSENGER	4MM ALLEN
8, 9	2	STRAPS DRIVER AND PASSENGER	5MM ALLEN
10	4	STEP SPACER	6MM ALLEN
11	2	BOLT PLATE	UTILITY KNIFE
12	1	SEAT BELT BRACKET	
13	4	M6 BUTTON HEAD BOLT (BLACK ZINC)	PRY TOOL
14	4	M6 LOCK WASHER (BLACK ZINC)	SOCKET EXT.
15	4	M6 FLAT WASHER (BLACK ZINC)	RATCHET
16	24	M8 BUTTON HEAD BOLT (BLACK ZINC)	TORQUE WRENCH
17	20	M8 SPLIT LOCK WASHER (BLACK ZINC)	
18	28	M8 FLAT WASHER (BLACK ZINC)	
19	4	M8 FLANGE NUT (BLACK ZINC)	
20	2	M10 BUTTON HEAD BOLT (BLACK ZINC)	
21	4	M10 SPLIT LOCK WASHER (BLACK ZINC)	
22	4	M10 FLAT WASHER (BLACK ZINC)	
23	2	M10 HEX NUT (BLACK ZINC)	
24	1	FISH WIRE	

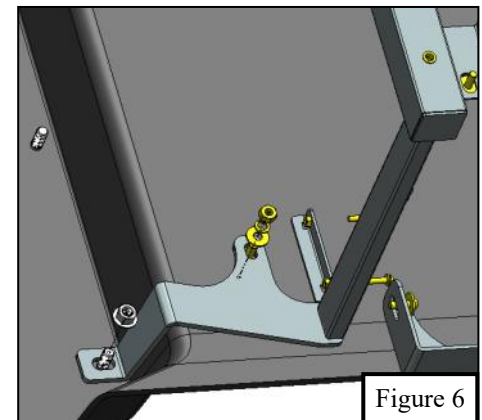
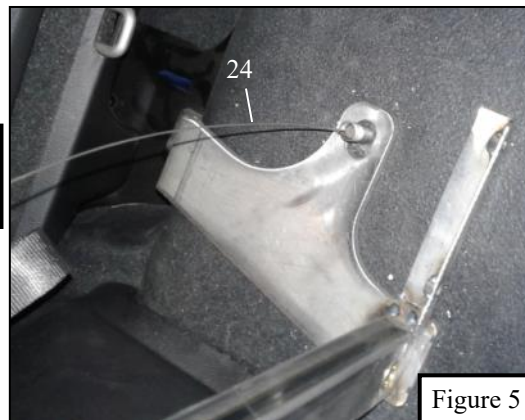
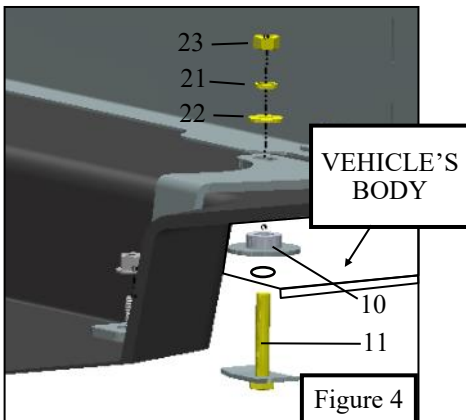
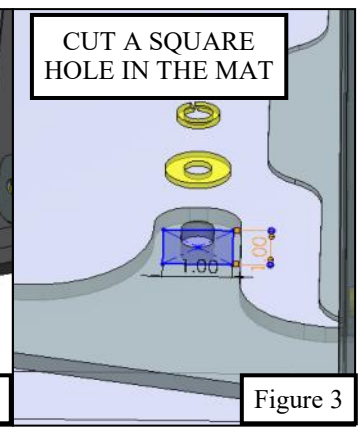
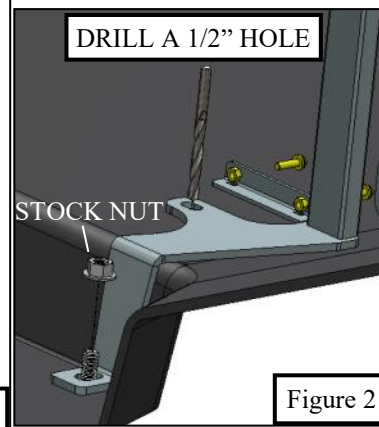
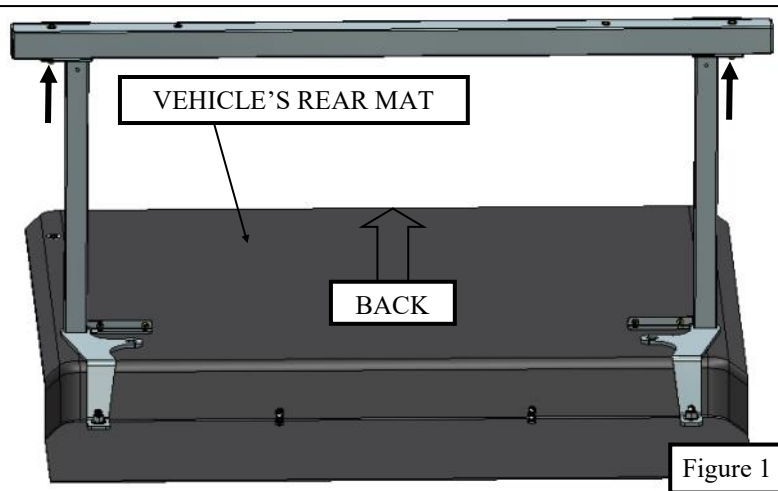
**ANTI-SEIZE LUBRICANT MUST BE USED ON ALL STAINLESS STEEL FASTENERS TO PREVENT THREAD DAMAGE AND GALLING**



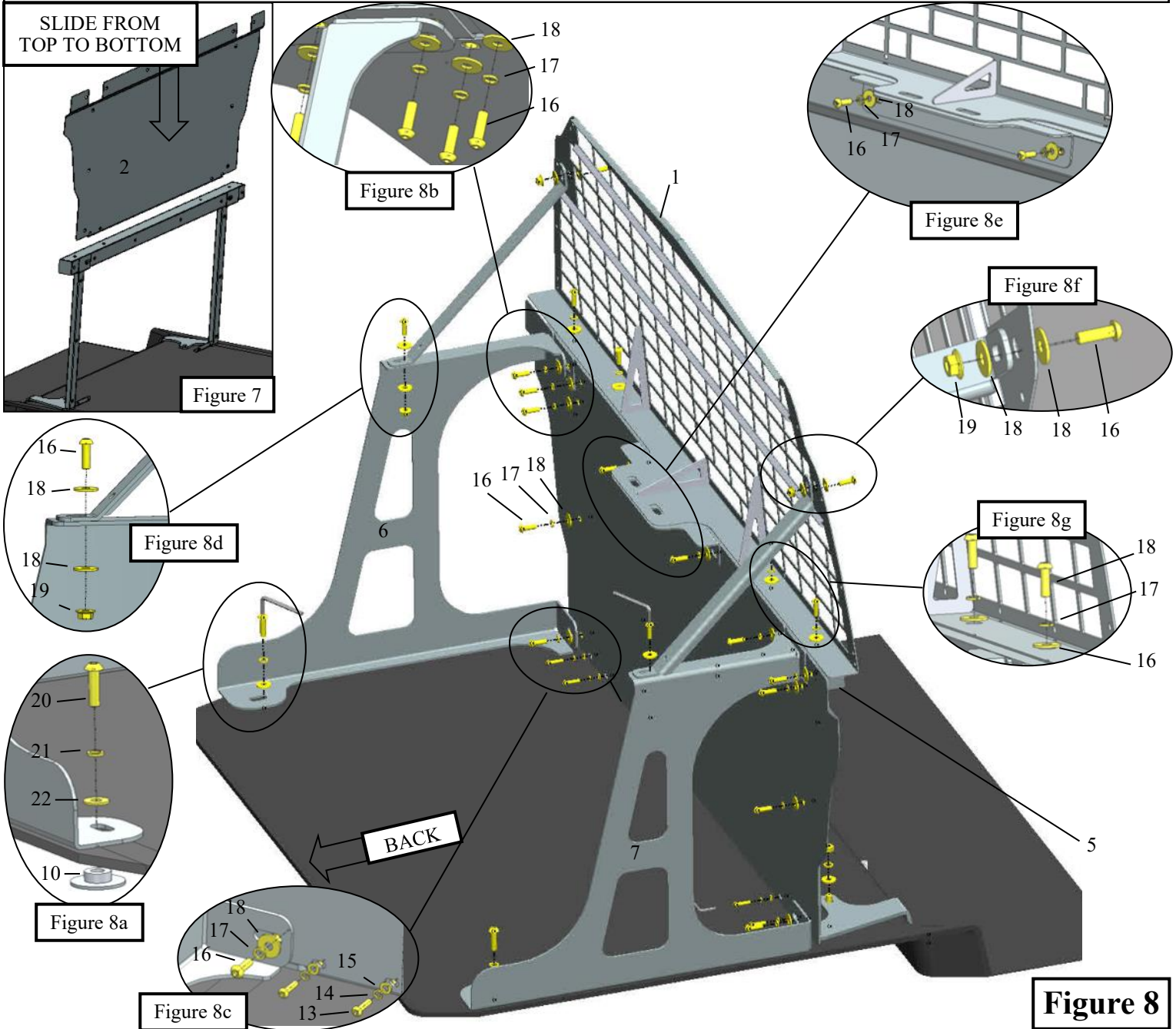
**INSTALLATION TIME: 25 - 35 MINUTES**

## PROCEDURE

1. Remove contents from box, verify if all parts listed are present and free from damage. Carefully read and understand all instructions before attempting installation.  
**Failure to identify damage before installation could lead to a rejection of any claim.**
2. If installing a prisoners seat. Remove the rear seats by removing 8 flange nuts under the seats. Save 2 of them for reuse.
3. If keeping the rear seats, just loosen and remove the 2 rear most and outer flange nuts. Save them for reuse.
4. Start by installing the Frame uprights (3, 4) by placing the brackets in the outer studs and using the previously removed flange nuts. Leave them loose. **Figures 1 & 2.**
5. Install Frame bar (5) on top of the Frame uprights using M8 hardware (16, 17, 18) for now at the bottom locations only. See black arrows in **figure 1.**
6. Push frame uprights (3, 4) along with the frame bar (5) towards the rear of the vehicle then center and square them with the vehicle. **Figure 1.**
7. Using a paint marker, mark the vehicle mat in the center of the slots. Remove the frame parts and drill a 1/2" hole. **Figure 2. Note: Before drilling be sure there are not any vehicle's gas, A/C or electrical lines under the body.**
8. Cut in the vehicle mat a 1" X 1" hole centered with the previously drilled 1/2" hole (figure 3) and place the step spacer (10) under the mat between the vehicle's body and the mat. **Figure 4.**
9. Place the frame parts back. Align the previously drilled holes with the brackets' slots. Insert a fish wire (24) into previously drilled holes, and under the vehicle, thread the fish wire to the bolt plate (11) and pull up to get the bolt plate into the hole. Use M10 hardware (21, 22, 23) to hold the bolt plate. **Figures 4, 5 and 6.** Square and center everything with the vehicle. Tighten hardware to: M8 hardware to 22-27 ft-lbs, M10 hardware to 51-56 ft-lbs and M12 hardware to 92-97 ft-lbs,

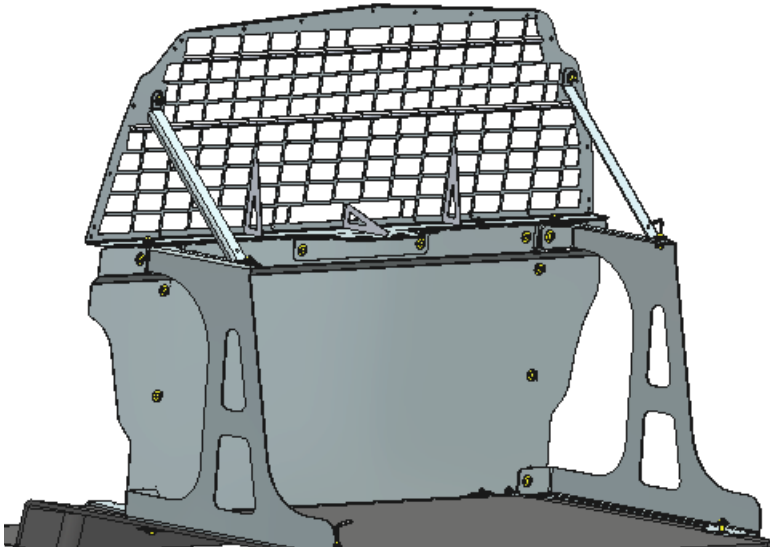


10. Install the filler panel (2) by sliding it from top to bottom. **Figure 7.** Use M8 hardware (16, 17, 18) and M6 Hardware at the bottom area (13, 14, 15) to install it. **Figure 8. Discard filler panel (2) if installing the Defender electrical box 35-120251.**
11. Install Upright brackets (6 & 7) By using first M8 hardware (16, 17, 18) to attached them to the filler panel (2) (**figures 8b & 8c**). Then look for and existing 10mm threaded hole under the mat (**figure 8a**) then cut a 1" X 1" square hole in the mat centered with the hole and insert the step spacer (10) as it was done in step 8 of this installation. And install M10 hardware (20, 21, 22, 23) to finish up right bracket installation. Leave the hardware loose for now.
12. Use M8 hardware to install seat belt bracket (12). **Figure 8e.**
13. Install screen guard (1) M8 hardware and straps (8 &9) **Figures 8, 8d, 8g, & 8f.** If installing a prisoners seat it will sit between frame bar (5) and under screen guard (1). **Note: it will fit only Westin part# Defender Prisoners seat 35-14025.**
14. Square and center everything with the vehicle. Tighten hardware to: M6 hardware to 6-8 ft-lbs, M8 hardware to 22-27 ft-lbs, M10 hardware to 51-56 ft-lbs and M12 hardware to 92-97 ft-lbs,

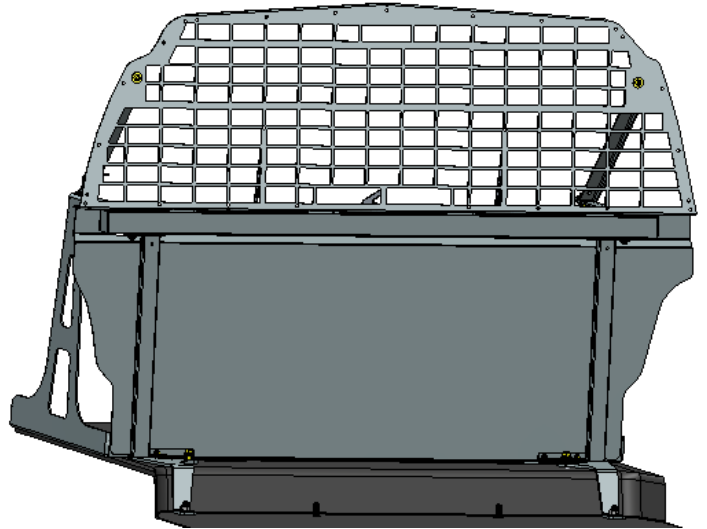


INSTALLATION COMPLETED

REAR



FRONT



CARE INSTRUCTIONS

- REGULAR WAXING IS RECOMMENDED. DO NOT USE ANY TYPE OF POLISH OR WAX THAT MAY CONTAIN ABRASIVES.
- STAINLESS STEEL PRODUCTS CAN BE CLEANED WITH MILD SOAP AND WATER. STAINLESS STEEL POLISH SHOULD BE USED TO POLISH SMALL SCRATCHES.
- GLOSS BLACK FINISHES SHOULD BE CLEANED WITH MILD SOAP AND WATER.

**WESTIN** Westin Automotive Products, Inc.  
320 W. Covina Blvd  
San Dimas, Ca. 91773

Thank you for choosing Westin products  
for additional installation assistance please call  
Customer Service (800) 793-7846

[www.westinautomotive.com](http://www.westinautomotive.com)

DATE: 7/25/18



## WARNING



Failure to follow these instructions could lead to death, personal injury, and / or property damage.

### FASTENERS:

All Westin supplied fasteners must be utilized and installed in accordance with the installation instructions and apply torque to the specifications as defined. **DOUBLE CHECK ALL FASTENERS BEFORE INITIAL USE, AND PERIODICALLY IN THE FUTURE TO ENSURE PROPER FUNCTION AND SAFETY.**

### DRILLING:

Most Westin products do not require drilling for installation. If drilling is defined as required, use caution when drilling a vehicle. **FAILURE TO REVIEW AN AREA TO BE DRILLED MAY RESULT IN PERSONAL INJURY AND/OR INJURY TO OTHERS AS WELL AS VEHICLE DAMAGE.**

### EYE PROTECTION:

**ALWAYS WEAR SAFETY GLASSES OR GOGGLES DURING THE INSTALLATION PROCESS TO AVOID PERSONAL INJURY.**

### MAXIMUM TOWING/CARRYING CAPACITY:

The Westin Receiver Hitches will have a visible tow rating label affixed directly on the product. User should never exceed the vehicle manufacturers maximum tow and weight rating regardless of the capacity of the hitch. **FAILURE TO FOLLOW THESE GUIDELINES WILL VOID THE WESTIN WARRANTY AND MAY RESULT IN PERSONAL INJURY AND/OR INJURY TO OTHERS AS WELL AS VEHICLE DAMAGE.**