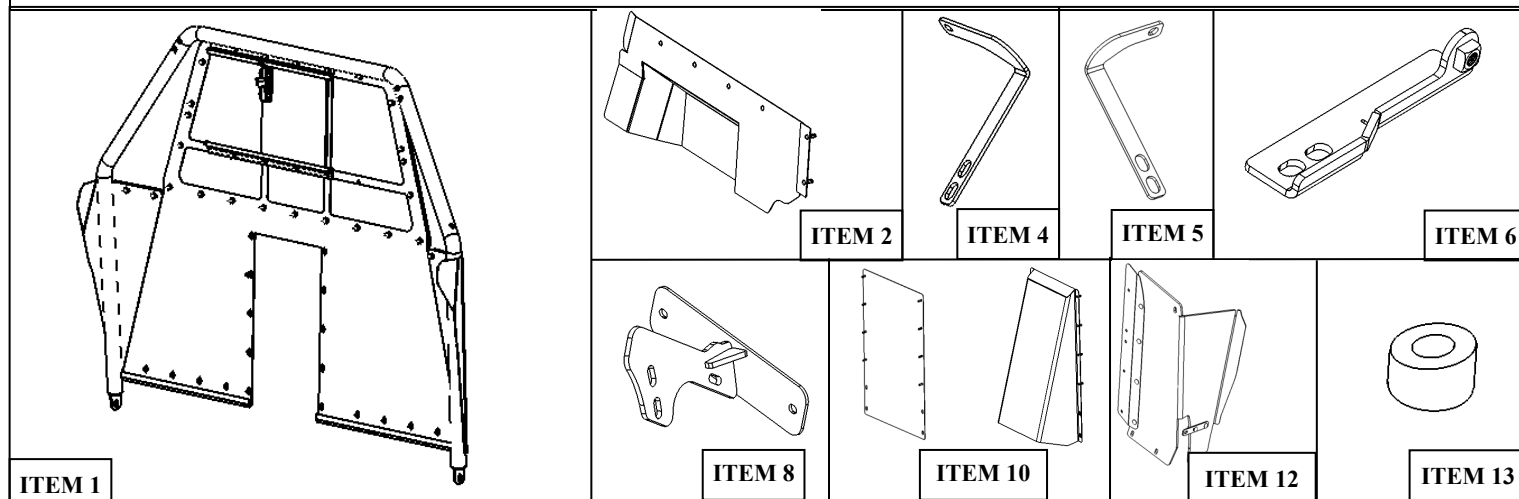




**INSTALLATION INSTRUCTIONS**  
**DEFENDER PIU PARTITION**  
**DEFENDER PARTITION WITH RECESSED PANEL**  
**APPLICATION:**  
**2015-2018 CHEVROLET TAHOE PPV**  
**PART NUMBER:**  
**35-10025**

ITEM	QUANTITY	DESCRIPTION	TOOLS NEEDED
1	1	PARTITION ASSEMBLY	14MM SOCKET
2, 3	2	FOOT POCKET, DRIVER (2) AND PASSENGER (3)	15MM SOCKET
4, 5	2	SUPPORT STRAP DRIVER (4) AND PASSENGER (5)	18MM SOCKET
6, 7	2	MOUNT BRACKET, DRIVER (6) AND PASSENGER (7)	M10 SOCKET
8, 9	2	UPPER MOUNT BRACKET, DRIVER (8) AND PASSENGER (9)	1/2 SOCKET
10	1	FLAT OR RECESSED PANEL	T45 TORX BIT
11, 12	2	POLY AIRBAG RELIEF DRIVER (11) AND PASSENGER (12)	5MM ALLEN
13	2	SPACERS	UTILITY KNIFE
14	2	M6 LONG BUTTON HEAD BOLT (BLACK ZINC)	PRY TOOL
15	22	M6 FLANGE NUT (BLACK ZINC)	SOCKET EXT.
16	4	M6 FLAT WASHER (BLACK ZINC)	RATCHET
17	6	M8 BUTTON HEAD BOLT (BLACK ZINC)	TORQUE WRENCH
18	6	M8 SPLIT LOCK WASHER (BLACK ZINC)	
19	6	M8 FLAT WASHER (BLACK ZINC)	
20	18	1/4" CARRIAGE BOLT (BLACK ZINC) W	
21	18	1/4" INTERNAL TOOTH WASHER (BLACK ZINC) W	
22	18	1/4" FLAT WASHER (BLACK ZINC) W	
23	18	1/4" ACORN NUT W	
24	2	M12 HEX HEAD SERRATED FLANGE BOLT (YELLOW ZINC)	

**ANTI-SEIZE LUBRICANT MUST BE USED ON ALL STAINLESS STEEL FASTENERS TO PREVENT THREAD DAMAGE AND GALLING**



**INSTALLATION TIME: 15 - 20 MINUTES**

## PROCEDURE

1. Remove contents from box, verify if all parts listed are present and free from damage.  
Carefully read and understand all instructions before attempting installation.  
**Failure to identify damage before installation could lead to a rejection of any claim.**
2. Start by removing both rear passenger handles by removing (2) plastic caps to expose the (2) bolts underneath. Remove the bolts to remove both handles. Save the stock bolts for reuse. See **Figures 1 and 2**.

Figure 1

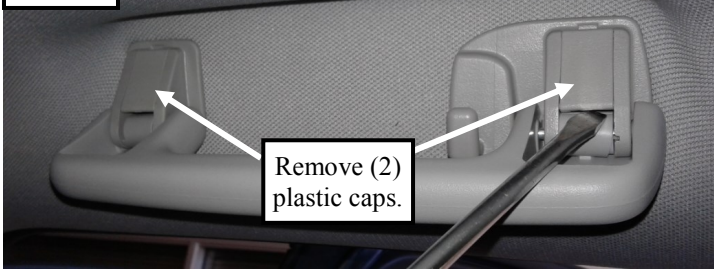
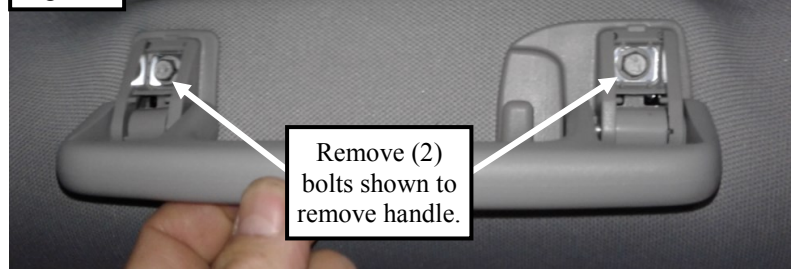


Figure 2



3. Move both front seats to their furthest rear location to expose front area of the seat rails .
4. Use a flat screw driver to remove the front plastic caps in all the floor rails. See **Figure 3**.
5. Move both front seats to their furthest front location to expose seat rails .
6. Use a flat screw driver to loose the rear plastic caps in all the floor rails. See **Figure 4**.
7. Remove the outer floor rails plastic covers passenger and driver by pushing towards rear of the vehicle. See **Figure 5**
8. Loosen and remove all the rear screws that hold the seat rails. And save them for product installation.
9. Loosen but do not remove all the front screws that hold the seat rails.

Figure 3



Figure 4

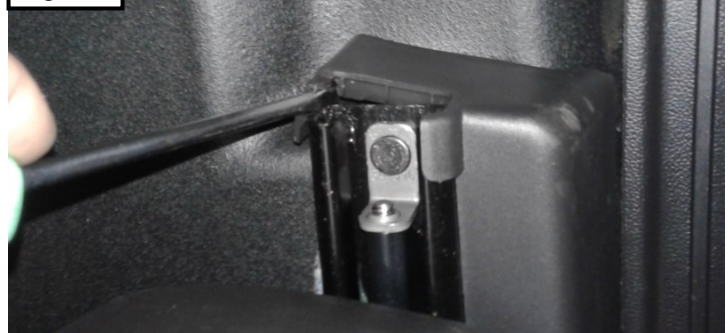


Figure 5

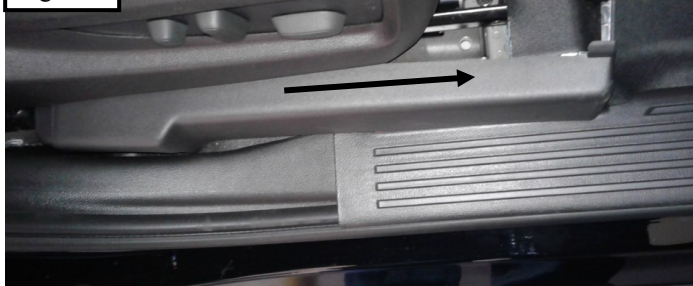
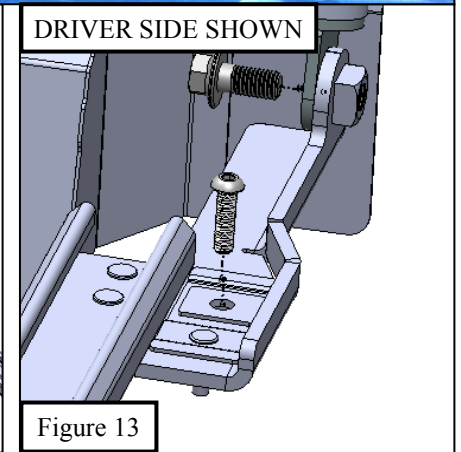
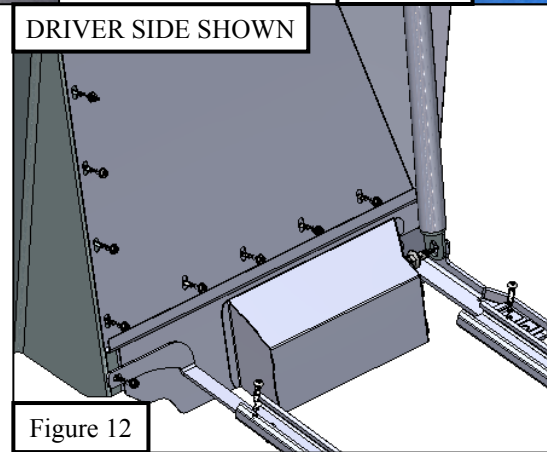
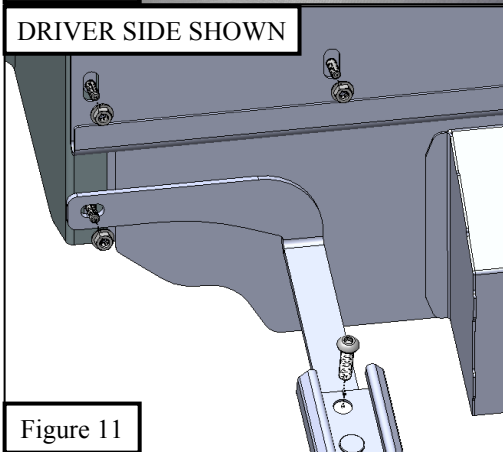
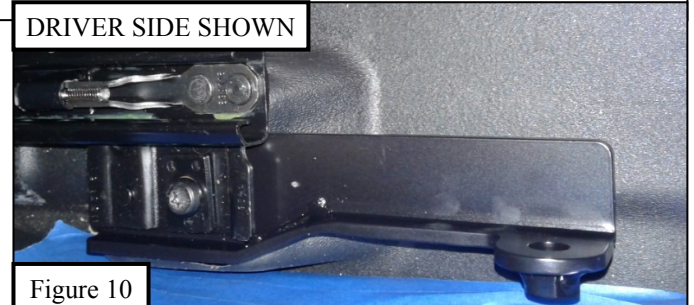
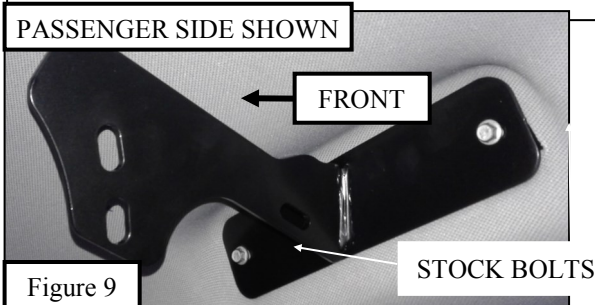


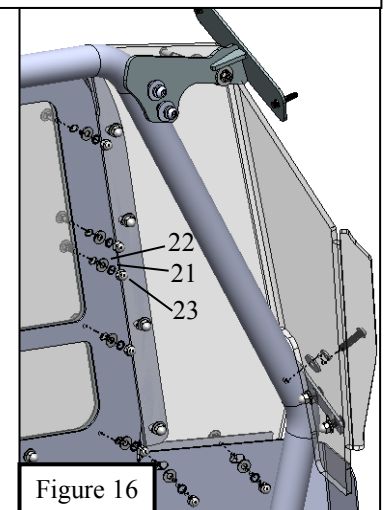
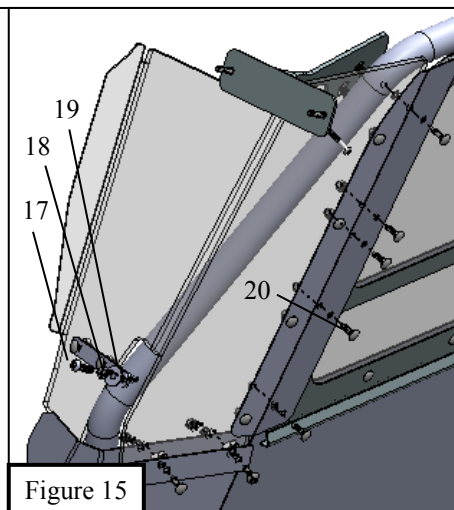
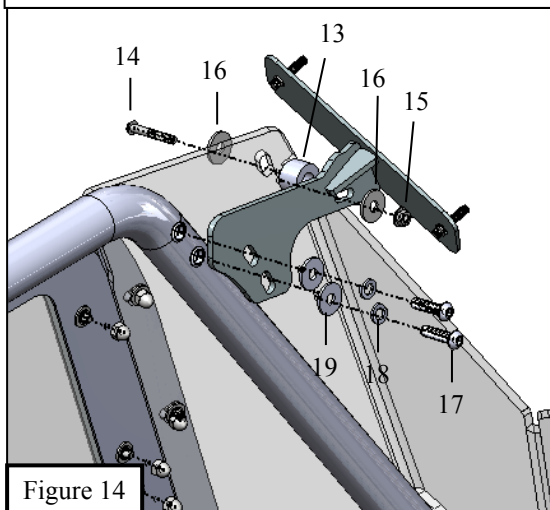
Figure 6



10. Start the installation by using the previously removed screws to install upper brackets 8 & 9 (**Figure 9**) at the location where the handles were removed (step 2, Figures 1 & 2).
11. Use previously removed screws from the seat rails to install mount brackets (6 & 7) and support straps (4 & 5) under the rails. The pin under the rails goes in to the first hole in the brackets. Figures 10, 11, 12, and 13.
12. Locate partition assembly (Item 1) and with assistance carefully insert into vehicle. Loosely secure onto the previously installed mount brackets (Items 6 and 7) using the provided M12 hex head serrated flange bolt (Item 24). Leave them loose for now. See **Figure 13**.



13. Install the partition to the upper bracket (**Figure 14**) already installed at step 10 figure 9. By using 17, 18 and 19 hardware. Leave them loose for now.
14. Install poly airbag reliefs (11 & 12) using M6 hardware (14, 15 & 16) and a spacer (13) at the upper bracket location. And 1/4" hardware (20, 21, 22, and 23) and M8 hardware (17, 18 & 19) at the lower partition locations. Figures 15 & 16.





15. Install the recessed panel or flat panel (10) by using the M6 flange nuts (15). Figure 17 & 18.
16. Install the foot packets (2 & 3) by using the M6 flange nuts (15). Figure 17 & 18. Make sure support strap (4 & 5) is installed as shown in figure 18.
17. Align and adjust the partition assembly and then tighten hardware to: M8 hardware to 15-18 ft-lbs, M6 & 1/4" hardware to 5-7 ft-lbs, M12 hardware to 50-55 ft-lbs,

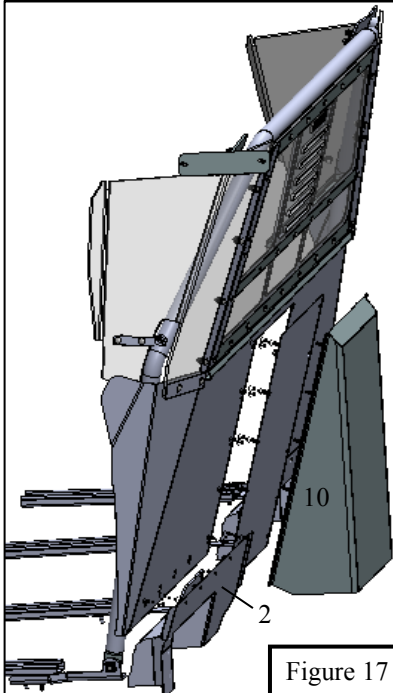


Figure 17

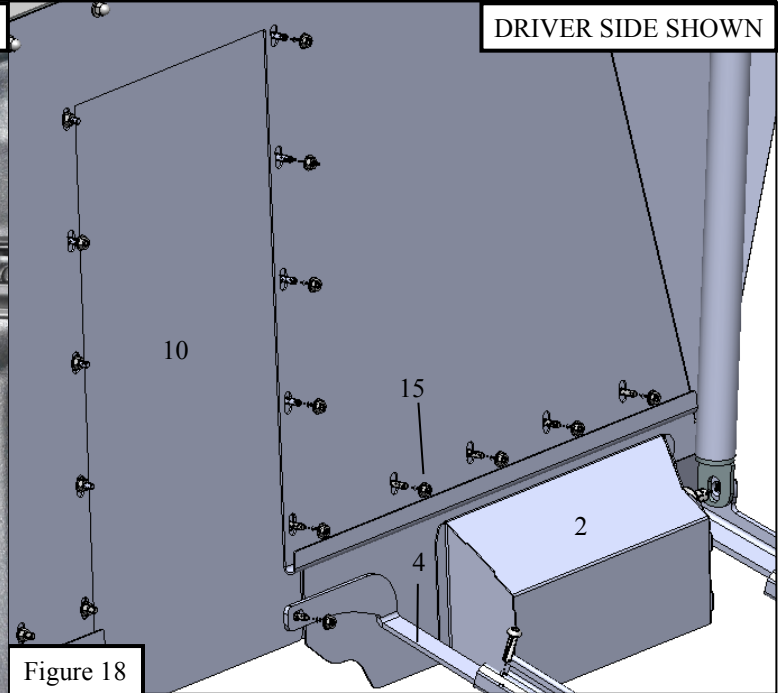
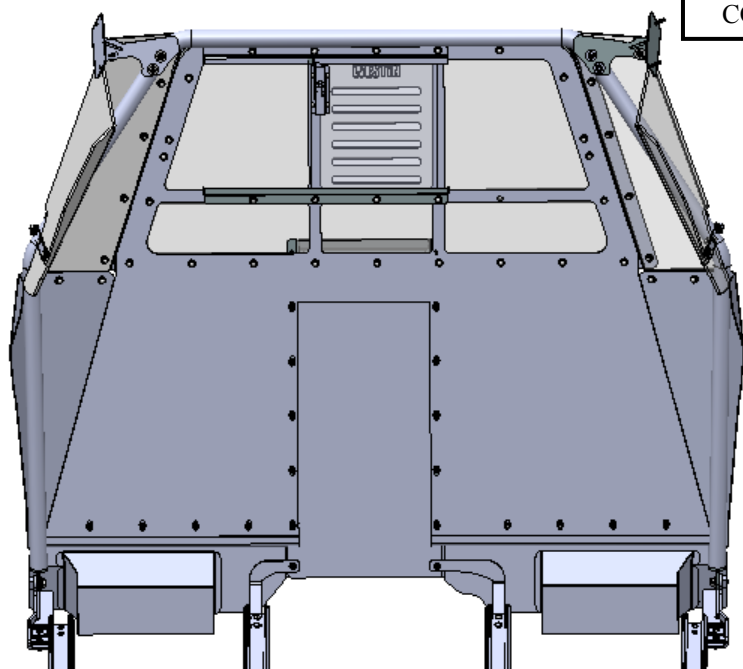


Figure 18



COMPLETED



#### CARE INSTRUCTIONS

- REGULAR WAXING IS RECOMMENDED. DO NOT USE ANY TYPE OF POLISH OR WAX THAT MAY CONTAIN ABRASIVES.
- STAINLESS STEEL PRODUCTS CAN BE CLEANED WITH MILD SOAP AND WATER. STAINLESS STEEL POLISH SHOULD BE USED TO POLISH SMALL SCRATCHES.
- GLOSS BLACK FINISHES SHOULD BE CLEANED WITH MILD SOAP AND WATER.



## WARNING



Failure to follow these instructions could lead to death, personal injury, and / or property damage.

### FASTENERS:

All Westin supplied fasteners must be utilized and installed in accordance with the installation instructions and apply torque to the specifications as defined. **DOUBLE CHECK ALL FASTENERS BEFORE INITIAL USE, AND PERIODICALLY IN THE FUTURE TO ENSURE PROPER FUNCTION AND SAFETY.**

### DRILLING:

Most Westin products do not require drilling for installation. If drilling is defined as required, use caution when drilling a vehicle. **FAILURE TO REVIEW AN AREA TO BE DRILLED MAY RESULT IN PERSONAL INJURY AND/OR INJURY TO OTHERS AS WELL AS VEHICLE DAMAGE.**

### EYE PROTECTION:

**ALWAYS WEAR SAFETY GLASSES OR GOGGLES DURING THE INSTALLATION PROCESS TO AVOID PERSONAL INJURY.**

### MAXIMUM TOWING/CARRYING CAPACITY:

The Westin Receiver Hitches will have a visible tow rating label affixed directly on the product. User should never exceed the vehicle manufacturers maximum tow and weight rating regardless of the capacity of the hitch. **FAILURE TO FOLLOW THESE GUIDELINES WILL VOID THE WESTIN WARRANTY AND MAY RESULT IN PERSONAL INJURY AND/OR INJURY TO OTHERS AS WELL AS VEHICLE DAMAGE.**



Westin Automotive Products, Inc.  
320 W. Covina Blvd  
San Dimas, Ca. 91773

Thank you for choosing Westin products  
for additional installation assistance please call  
Customer Service (800) 793-7846  
[www.westinautomotive.com](http://www.westinautomotive.com)