



# INSTALLATION INSTRUCTIONS

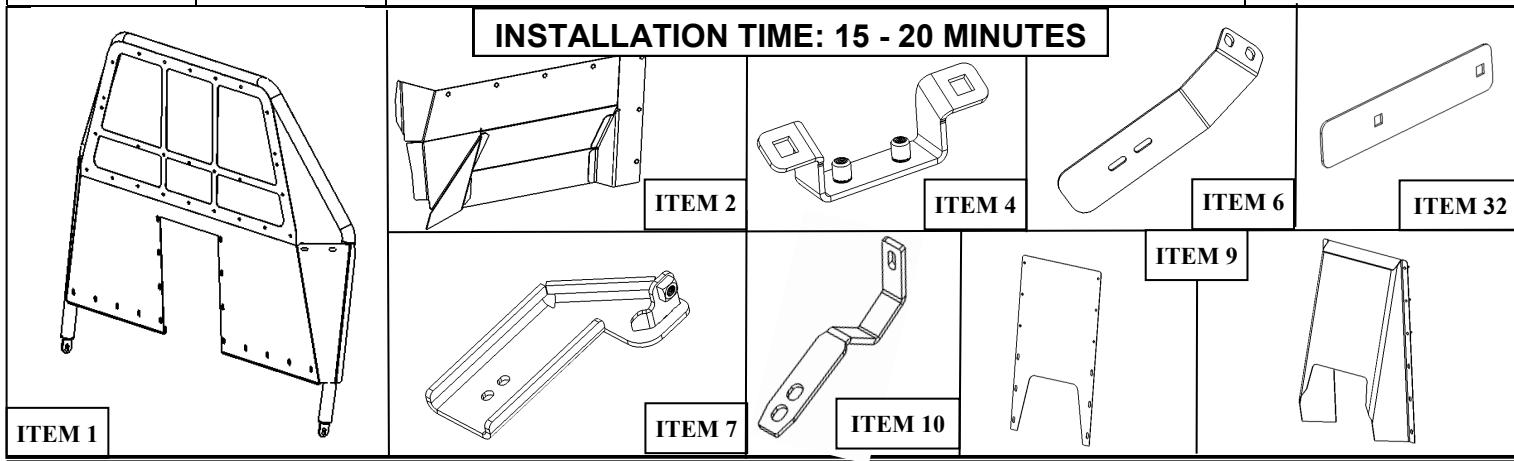
## DEFENDER PIU PARTITION

### DEFENDER PIU PARTITION WITH RECESSED PANEL

APPLICATION: 2015-2018 Dodge Charger Pursuit

PART NUMBER: 35-10015

ITEM	QUANTITY	DESCRIPTION	TOOLS NEEDED
1	1	PARTITION ASSEMBLY	7/16" SOCKET
2,3	2	FEET POCKET, DRIVER (2) AND PASSENGER (3)	18MM SOCKET
4	2	UPPER SUPPORT BRACKET	15MM SOCKET
5,6	2	UPPER BRACKET, DRIVER (5) AND PASSENGER (6)	UTILITY KNIFE
7,8	2	BOTTOM MOUNT BRACKET, DRIVER (7) AND PASSENGER (8)	PRY TOOL
9	1	MIDDLE COVER PLATE OR RECESSED PANEL	6MM ALLEN WRENCH
10	2	STRAP	5MM ALLEN WRENCH
11	4	M6 LONG BUTTON HEAD BOLT (BLACK ZINC)	4MM ALLEN WRENCH
12	4	M6 SPLIT LOCK WASHER (BLACK ZINC)	SOCKET EXT.
13	4	M6 FLAT WASHER (BLACK ZINC)	RATCHET
14	4	M8 BUTTON HEAD BOLT (BLACK ZINC)	TORQUE WRENCH
15	4	M8 SPLIT LOCK WASHER (BLACK ZINC)	
16	4	M8 FLAT WASHER (BLACK ZINC)	
17	4	M10 SQUARE NECK BOLTS	
18	1	M10 FISH WIRE	
19	4	M10 FLANGE NUTS	
20	4	M10 BUTTON HEAD BOLT (BLACK ZINC)	
21	4	M10 SPLIT LOCK WASHER (BLACK ZINC)	
22	4	M10 FLAT WASHER (BLACK ZINC)	
23	2	M12 HEX HEAD SERRATED FLANGE BOLT (YELLOW ZINC)	
24	20	M6 FLANGE HEX NUTS (BLACK ZINC)	
25	4	FOAM TAPE	
26, 27	2	AIR BAGS RELIEFS, DRIVER AND PASSENGER	
28	14	1/4" SQUARE NECK BOLT (BLACK ZINC)	"W"
29	14	1/4" A-CORN NUT (BLACK ZINC)	"W"
30	14	1/4" FLAT WASHER (BLACK ZINC)	"W"
31	14	1/4" INTERNAL TOOTH WASHER (BLACK ZINC)	"W"
32	2	AIRBAG RELIEF PLATE	



**WESTIN** Westin Automotive Products, Inc.  
320 W. Covina Blvd  
San Dimas, Ca. 91773

Thank you for choosing Westin products  
for additional installation assistance please call  
Customer Service (800) 793-7846

## PROCEDURE

1. Remove contents from box, verify if all parts listed are present and free from damage.  
Carefully read and understand all instructions before attempting installation.  
**Failure to identify damage before installation could lead to a rejection of any claim.**
2. Start installation by removing the rear passenger and driver handles above rear door windows. Remove the 2 bolts that holds each one of the handles. See figure 1.
3. Remove the white plastic bracket under the handle by removing the 2 screws.
4. Using a flat screw driver, force out to remove the nut clips now exposed after the white plastic removal. See figure 2.
5. Using the supplied fish wire (18), install the M10 square bolts (17) through the square holes the screw clips were installed. See figure 3.
6. Using the supplied M10 flange nuts (19) install the upper support bracket as shows in figure 4. Be sure to center bracket in the handle opening. Tighten flange nuts to 38 ft. lbs.
7. Using the supplied foam tape, cut and place to foam tape in the upper brackets (5 and 6), as shown in figure 5.
8. Using M6 hardware (11,12 and 13) Install brackets loosely as shown in figure 6.

NOTE: SEE FULL PARTITION ASSEMBLY DIAGRAM IN PAGE 4 .



Figure 1



Figure 2



Figure 3



Figure 4



Figure 5



Figure 6

9. Next. Loosen the front bolts the hold front seats rails attached to the floor. Then remove the rear bolts the hold the rails.
10. Using the M10 button head bolts (20) lock washers (21) and flat washer (22) raise the rear of the front seats and install the brackets (7 and 8) and straps (10) under the rails behind the seats. Leave them loosely for now. See **figure 7**. Passenger side shown. Leave hardware loose for now.

Install the partition assembly (1) using a M12 flange bolt and onto the bottom brackets 7 and 8) See figure 8. Leave hardware loose for now. Figure 8.

NOTE: SEE FULL PARTITION ASSEMBLY IN PAGE 4.

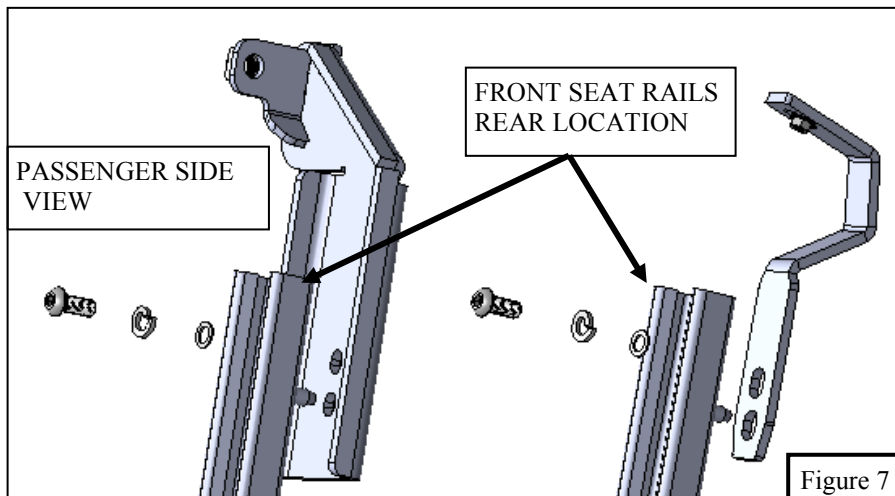


Figure 7

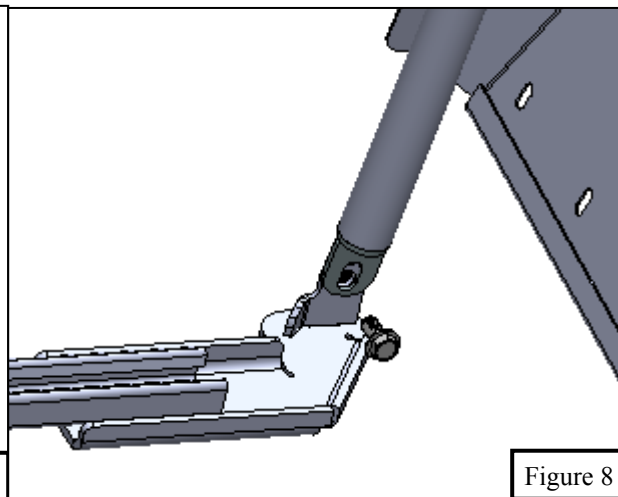


Figure 8

2. Attached partition to upper brackets using the supplied M8 hardware (14, 15, and 16). Leave hardware loose for now. Figure 9.
3. Using the 1/4" hardware (28 to 31) and the airbag relief plate (32), install the Airbag reliefs (26 and 27) On the partition Figure 10.

NOTE: SEE FULL PARTITION ASSEMBLY IN PAGE 4.

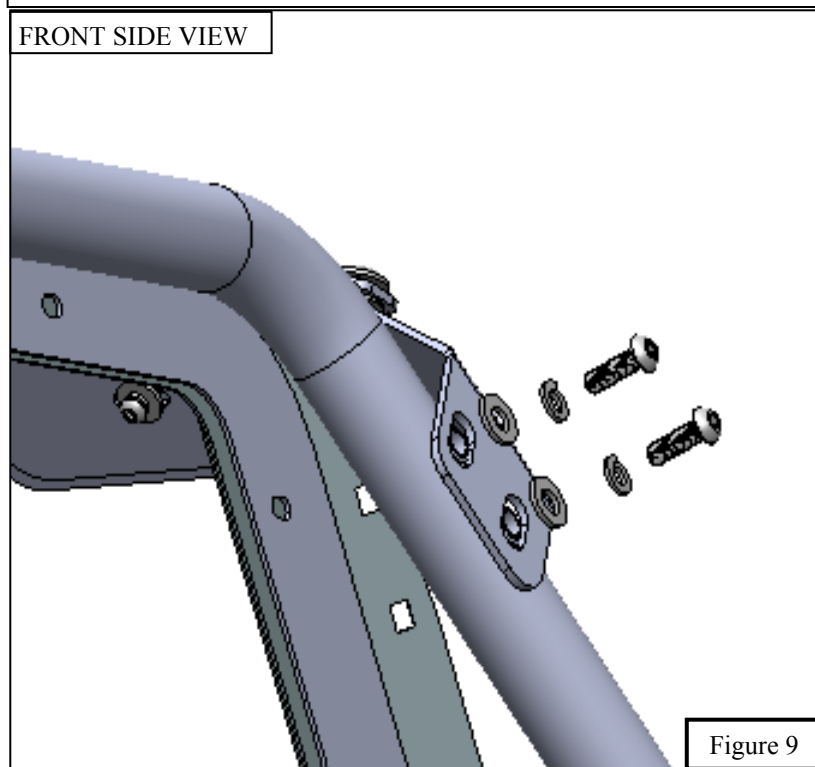


Figure 9

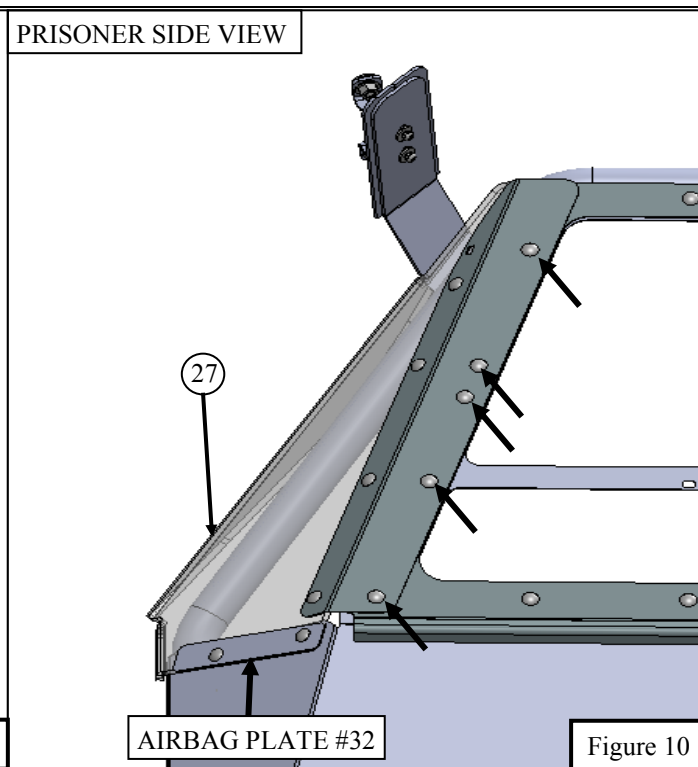
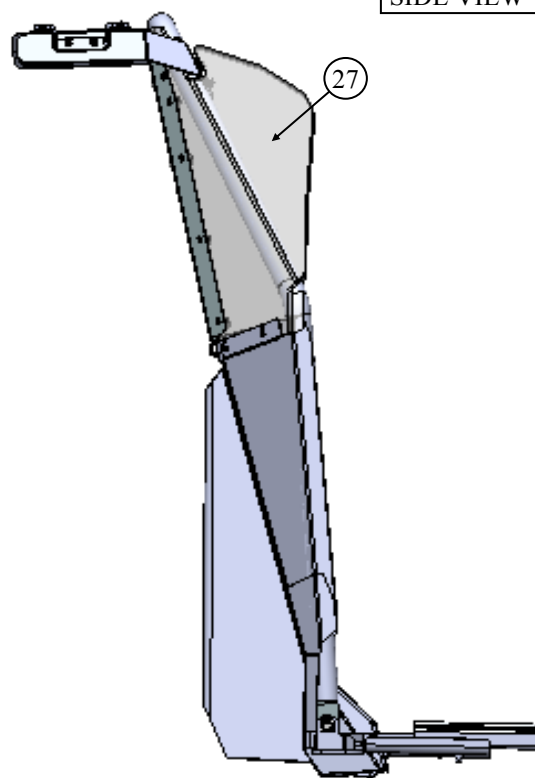
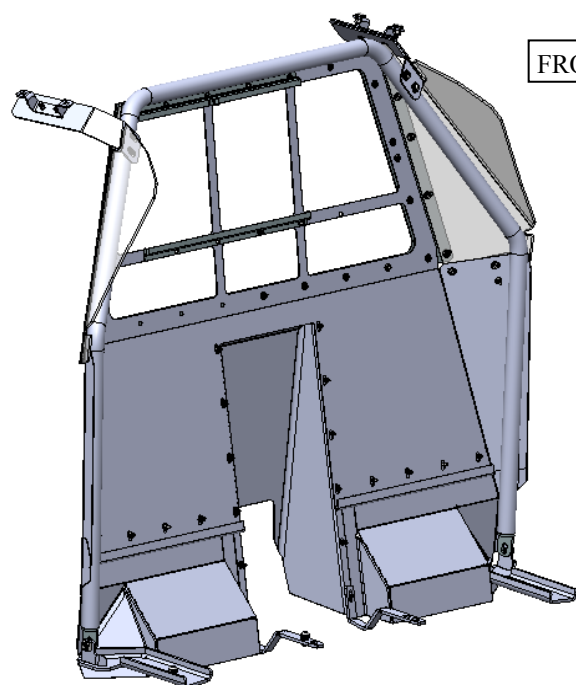
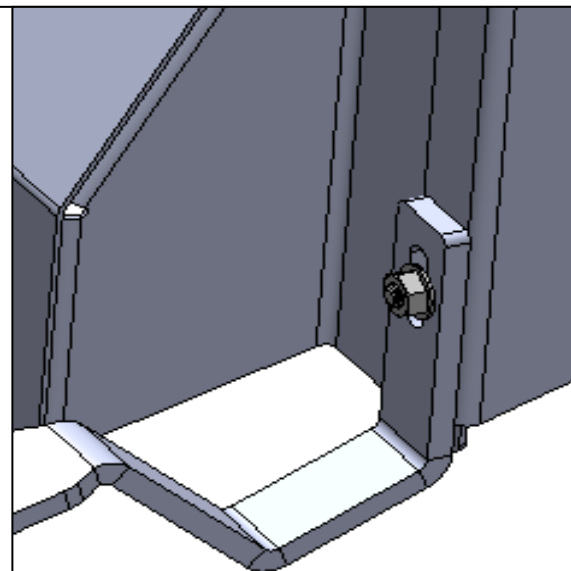
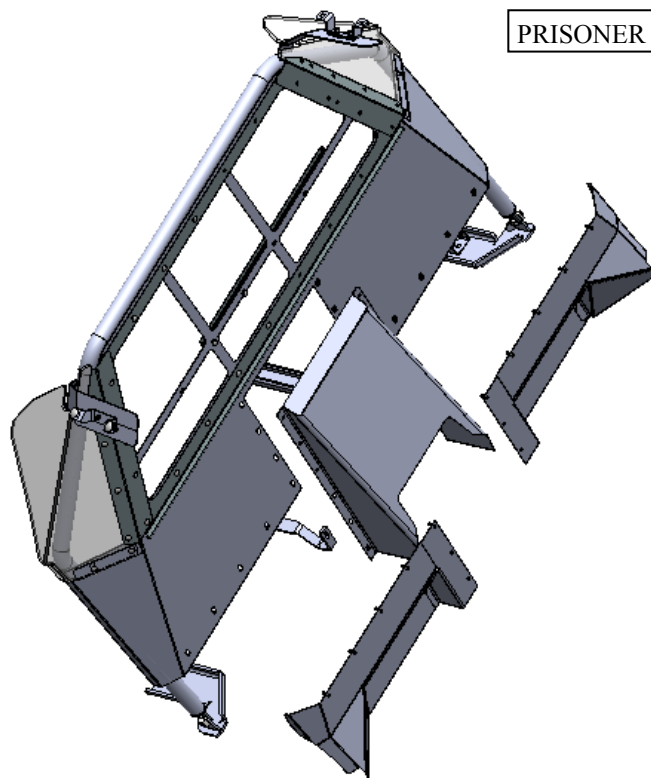


Figure 10

14. Install the recessed panel or the middle plate (9). And using the M6" flange nuts (24) install the foot pockets. Driver and passenger (2 and 3). And straps (10)

15. Tighten all hardware: 1/4" M6 to 8 ft. Lbs. M8 to 19 ft. Lbs. M10 to 38 ft. Lbs. M12 to 65 ft. Lbs.



#### CARE INSTRUCTIONS

- REGULAR WAXING IS RECOMMENDED. DO NOT USE ANY TYPE OF POLISH OR WAX THAT MAY CONTAIN ABRASIVES.
- STAINLESS STEEL PRODUCTS CAN BE CLEANED WITH MILD SOAP AND WATER. STAINLESS STEEL POLISH SHOULD BE USED TO POLISH SMALL SCRATCHES.
- GLOSS BLACK FINISHES SHOULD BE CLEANED WITH MILD SOAP AND WATER.





## WARNING



Failure to follow these instructions could lead to death, personal injury, and / or property damage.

### FASTENERS:

All Westin supplied fasteners must be utilized and installed in accordance with the installation instructions and apply torque to the specifications as defined. **DOUBLE CHECK ALL FASTENERS BEFORE INITIAL USE, AND PERIODICALLY IN THE FUTURE TO ENSURE PROPER FUNCTION AND SAFETY.**

### DRILLING:

Most Westin products do not require drilling for installation. If drilling is defined as required, use caution when drilling a vehicle. **FAILURE TO REVIEW AN AREA TO BE DRILLED MAY RESULT IN PERSONAL INJURY AND/OR INJURY TO OTHERS AS WELL AS VEHICLE DAMAGE.**

### EYE PROTECTION:

**ALWAYS WEAR SAFETY GLASSES OR GOGGLES DURING THE INSTALLATION PROCESS TO AVOID PERSONAL INJURY.**

### MAXIMUM TOWING/CARRYING CAPACITY:

The Westin Receiver Hitches will have a visible tow rating label affixed directly on the product. User should never exceed the vehicle manufacturers maximum tow and weight rating regardless of the capacity of the hitch. **FAILURE TO FOLLOW THESE GUIDELINES WILL VOID THE WESTIN WARRANTY AND MAY RESULT IN PERSONAL INJURY AND/OR INJURY TO OTHERS AS WELL AS VEHICLE DAMAGE.**



Westin Automotive Products, Inc.  
320 W. Covina Blvd  
San Dimas, Ca. 91773

Thank you for choosing Westin products  
for additional installation assistance please call  
Customer Service (800) 793-7846  
[www.westinautomotive.com](http://www.westinautomotive.com)