



AUTOMOTIVE PRODUCTS, INC.

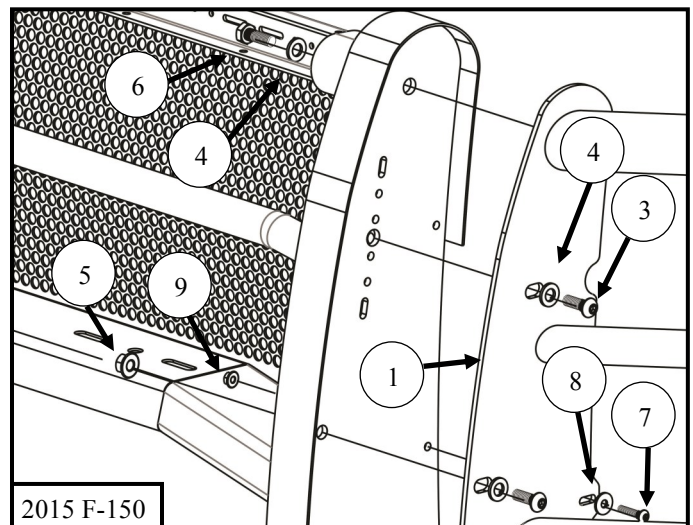
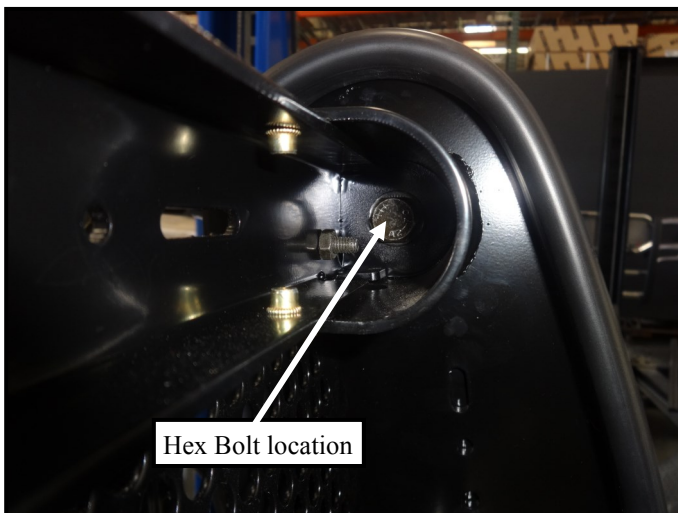
## INSTALLATION INSTRUCTIONS

APPLICATION: POLICE WING WRAP / 2015—2016 FORD F-150, 2013 & UP DODGE RAM 1500 SSV  
2014 –2015 CHEVY SILVERADO 1500, 2016 CHEVY SILVERADO 1500 /  
APP PART # 36-52065W, 36-53545W, 36-53685W, 36-53805W, 36-53875W

ITEM	QUANTITY	DESCRIPTION	TOOLS NEEDED
1	1	WING WRAP ASSEMBLY DRIVER SIDE	RATCHET
2	1	WING WRAP ASSEMBLY PASSENGER SIDE	TORQUE WRENCH
3	4	M10 HEX BUTTON HEAD SCREW (STAINLESS)	ALLEN WRENCH
4	6	M10 CUP WASHER (STAINLESS)	16MM SOCKET
5	4	M10 SERRATED FLANGE NUT (STAINLESS)	10MM SOCKET
6	2	M10 HEX HEAD CAP SCREW (STAINLESS)	15MM SOCKET
7	2	M6 BUTTON HEAD SCREW (STAINLESS)	SOCKET EXT.
8	2	M6 FLAT WASHER 18MM OD (STAINLESS)	
9	2	M6 SERRATED FLANGE NUT (STAINLESS)	

**ANTI-SEIZE LUBRICANT MUST BE USED ON ALL STAINLESS STEEL FASTENERS TO PREVENT THREAD DAMAGE AND GALLING .**

1. Remove contents from box, verify if all parts listed are present and undamaged. Carefully read and understand all instructions before attempting installation. **Failure to identify damage before installation could lead to a rejection of any claim.**
2. Install the Police Push Bumper (36-52065/36-53545/36-53685/36-53805/36-53875) to the front of vehicle. Refer to I/ S 75-1101/75-1085/75-1034/75-0688/75-365387 for information on push bar installation.
3. One side at a time loosely install each Wing Wrap to the Push Bar uprights using the supplied M10 and M6 hardware. (Note: The M10 Hex Bolt threads into a welded nut on the inside the wing wrap.)
4. Align and adjust the Wing Wraps as necessary then tighten and torque all fasteners as follows: M6 to 7-9 ft-lbs., M10 to 30– 35 ft-lbs.

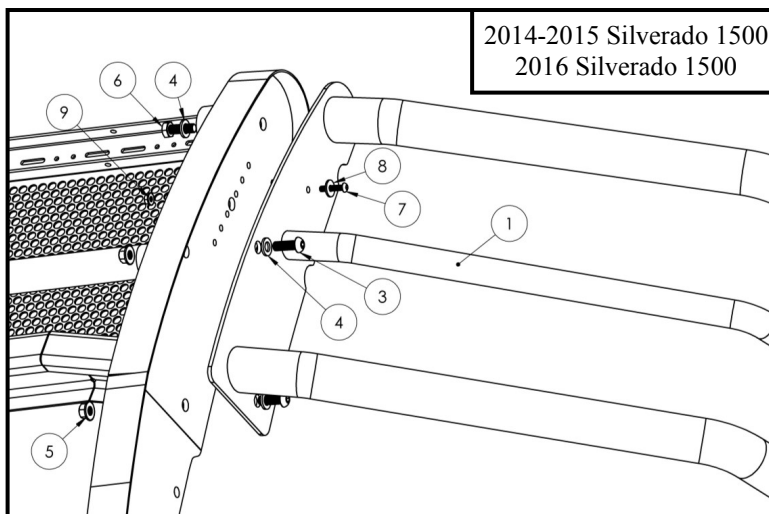
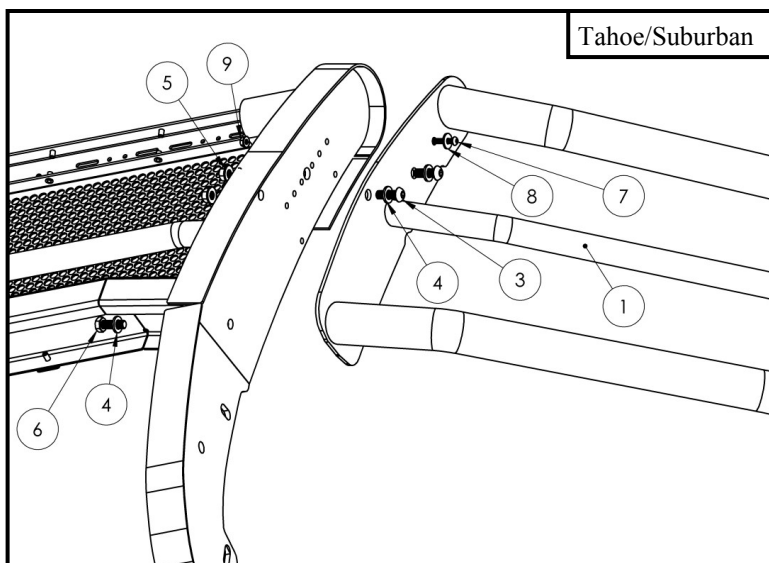
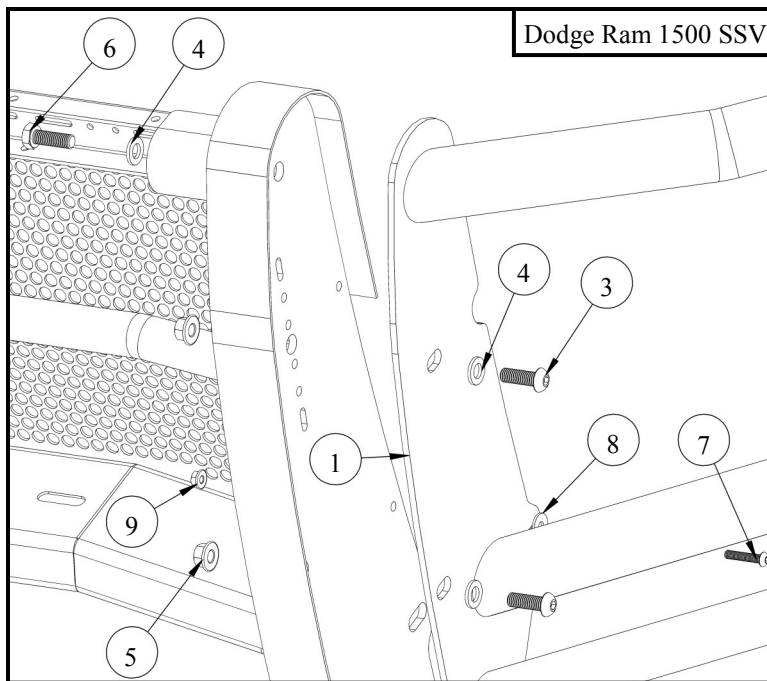


Westin Automotive Products, Inc.  
320 Covina Blvd  
San Dimas, Ca. 91773

P.N.: 75-3056-RevD

ECO #: W16-0044

Thank You for choosing Westin products  
For Additional installation assistance please call  
Customer service (800) 793-7846  
[www.westinautomotive.com](http://www.westinautomotive.com)



Westin Automotive Products, Inc.  
320 Covina Blvd  
San Dimas, Ca. 91773

Thank You for choosing Westin products  
For Additional installation assistance please call  
Customer service (800) 793-7846  
[www.westinautomotive.com](http://www.westinautomotive.com)



#### CARE INSTRUCTIONS

- REGULAR WAXING IS RECOMMENDED. DO NOT USE ANY TYPE OF POLISH OR WAX THAT MAY CONTAIN ABRASIVES.
- STAINLESS STEEL PRODUCTS CAN BE CLEANED WITH MILD SOAP AND WATER. STAINLESS STEEL POLISH SHOULD BE USED TO POLISH SMALL SCRATCHES.
- GLOSS BLACK FINISHES SHOULD BE CLEANED WITH MILD SOAP AND WATER.



Westin Automotive Products, Inc.  
320 Covina Blvd  
San Dimas, Ca. 91773

P.N.: 75-3056-RevD

ECO #: W16-0044

3

Thank You for choosing Westin products  
For Additional installation assistance please call  
Customer service (800) 793-7846  
[www.westinautomotive.com](http://www.westinautomotive.com)

DATE: 7/21/16





SIGNATURE OF QUALITY

AUTOMOTIVE PRODUCTS, INC.



## WARNING



Failure to follow these instructions could lead to death, personal injury, and / or property damage.

### FASTENERS:

All Westin supplied fasteners must be utilized and installed in accordance with the installation instructions and apply torque to the specifications as defined. **DOUBLE CHECK ALL FASTENERS BEFORE INITIAL USE, AND PERIODICALLY IN THE FUTURE TO ENSURE PROPER FUNCTION AND SAFETY.**

### DRILLING:

Most Westin products do not require drilling for installation. If drilling is defined as required, use caution when drilling a vehicle. **FAILURE TO REVIEW AN AREA TO BE DRILLED MAY RESULT IN PERSONAL INJURY AND/OR INJURY TO OTHERS AS WELL AS VEHICLE DAMAGE.**

### EYE PROTECTION:

**ALWAYS WEAR SAFETY GLASSES OR GOGGLES DURING THE INSTALLATION PROCESS TO AVOID PERSONAL INJURY.**

### MAXIMUM TOWING/CARRYING CAPACITY:

The Westin Receiver Hitches will have a visible tow rating label affixed directly on the product. User should never exceed the vehicle manufacturers maximum tow and weight rating regardless of the capacity of the hitch. **FAILURE TO FOLLOW THESE GUIDELINES WILL VOID THE WESTIN WARRANTY AND MAY RESULT IN PERSONAL INJURY AND/OR INJURY TO OTHERS AS WELL AS VEHICLE DAMAGE.**



Westin Automotive Products, Inc.  
320 Covina Blvd  
San Dimas, Ca. 91773

P.N.: 75-3056-RevD

ECO #: W16-0044

4

Thank You for choosing Westin products  
For Additional installation assistance please call  
Customer service (800) 793-7846  
[www.westinautomotive.com](http://www.westinautomotive.com)

DATE: 7/21/16