

INSTALLATION INSTRUCTIONS

OUTLAW RUNNING BOARDS



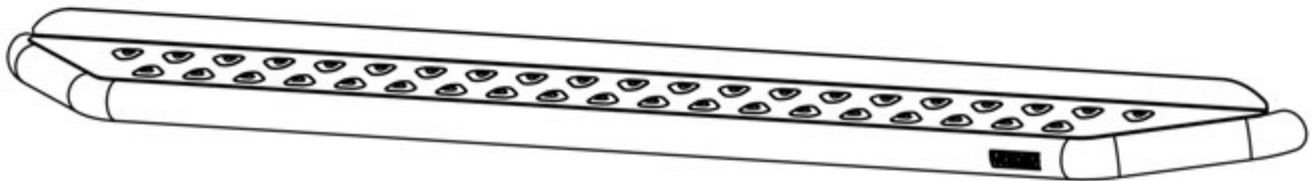
APPLICATION:
TOYOTA LAND CRUISER 2024-2026

PART NUMBER:
28-33795

CONTENT			
ITEM	QUANTITY	DESCRIPTION	TOOLS NEEDED
1	1	DRIVER RUNNING BOARD	13MM SOCKET
2	1	PASSENGER RUNNING BOARD	13MM WRENCH
3	1	FRONT DRIVER MOUNTING BRACKET	16MM SOCKET
4	1	FRONT PASSENGER MOUNTING BRACKET	16MM WRENCH
5	1	CENTER DRIVER MOUNTING BRACKET	RATCHET
6	1	CENTER PASSENGER MOUNTING BRACKET	TORQUE WRENCH
7	1	REAR DRIVER MOUNTING BRACKET	
8	1	REAR PASSENGER MOUNTING BRACKET	
9	12	M8 HEX HEAD BOLT	
10	12	M8 SPLIT LOCK WASHER	
11	12	M8 FLAT WASHER	
12	12	M10 HEX HEAD BOLT	
13	12	M10 SERRATED BELLVILLE WASHER	
14	12	M10 SERRATED HEX FLANGE NUT	

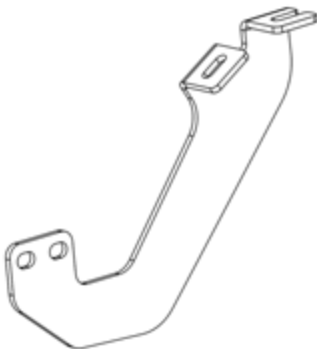
ANTI-SEIZE LUBRICANT MUST BE USED ON ALL STAINLESS STEEL FASTENERS TO PREVENT THREAD DAMAGE AND GALLING

ITEM 1 - Passenger Side Opposite



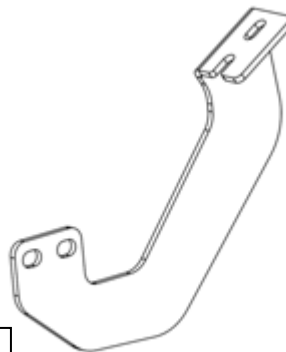
Driver Side

ITEM 3 - Passenger Side Opposite



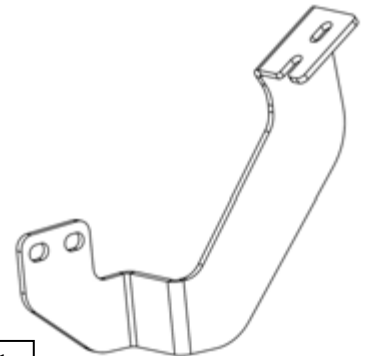
Driver Side

ITEM 5 - Passenger Side Opposite



Driver Side

ITEM 7 - Passenger Side Opposite



Driver Side



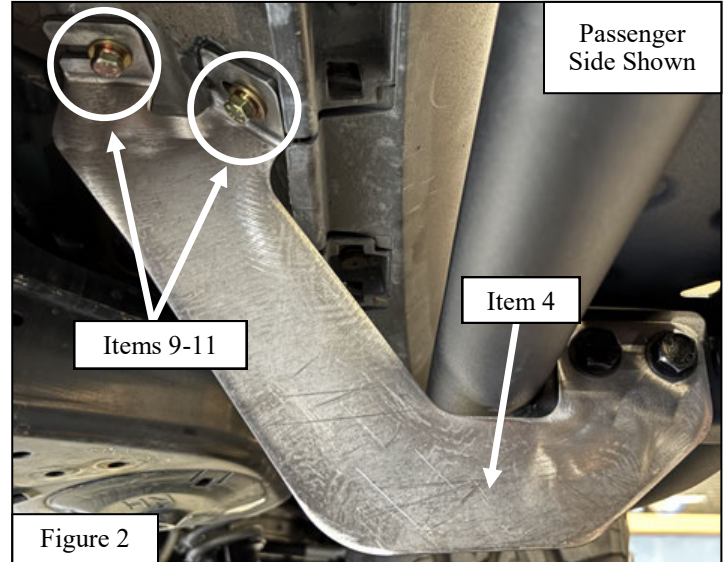
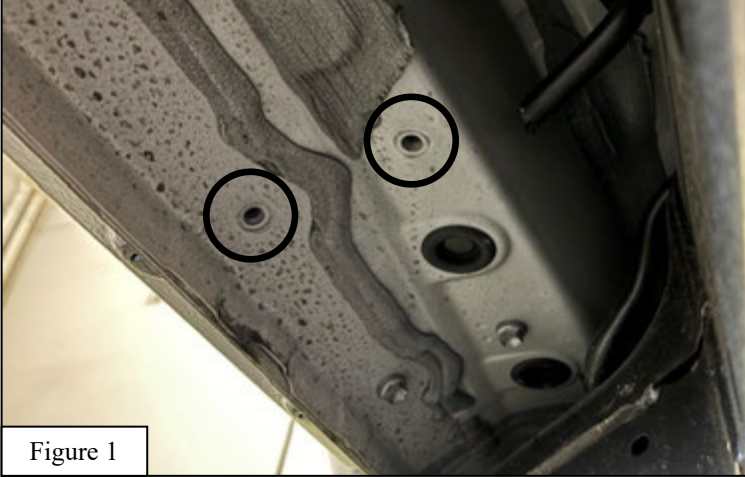
Westin Automotive Products, Inc.
320 W. Covina Blvd
San Dimas, Ca. 91773

Thank you for choosing Westin products
for additional installation assistance please call
Customer Service (800) 793-7846
www.westinautomotive.com

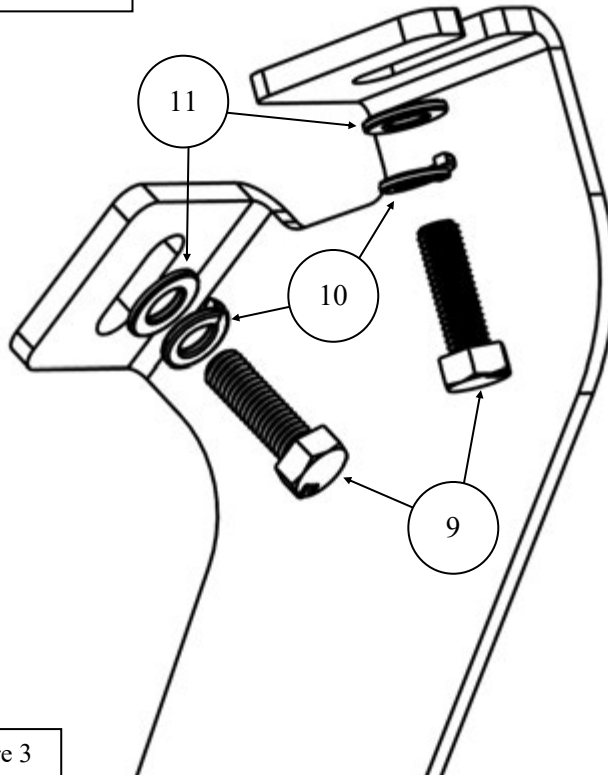
PROCEDURE

1. Remove contents from box, verify if all parts listed are present and free from damage.
Carefully read and understand all instructions before attempting installation.
Failure to identify damage before installation could lead to a rejection of any claim.
2. Find the Front Passenger Mounting Bracket location and remove the OEM bolts. See **Figure 1**.
3. Loosely install Front Passenger Mounting Bracket (**item 4**) using the M8 hardware (**items 9-11**). See **Figures 2 and 3**.

Front Driver Mounting Bracket Location Shown
Passenger Similar



For Hardware
Usage Only

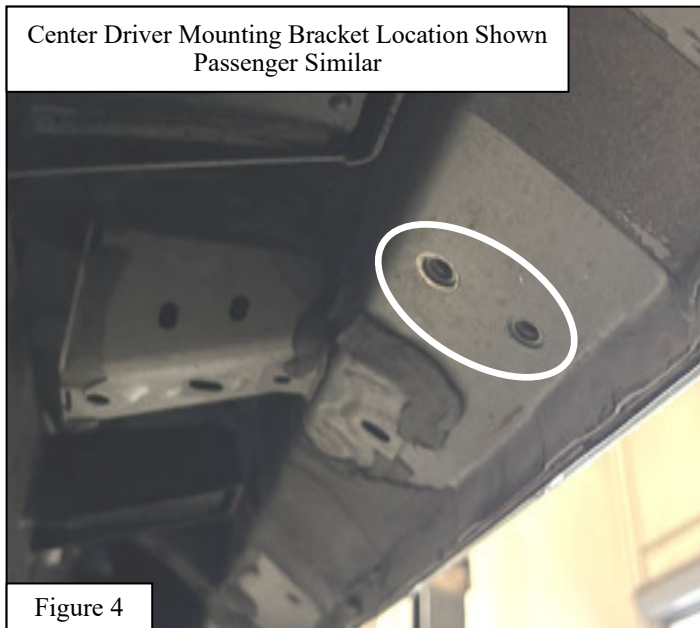


WESTIN

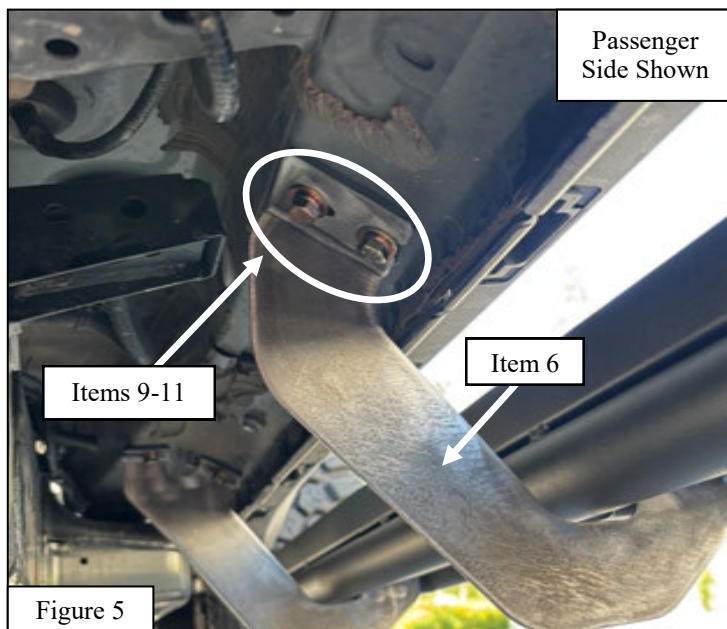
Westin Automotive Products, Inc.
320 W. Covina Blvd
San Dimas, Ca. 91773

4. Locate the Center Passenger Mounting Bracket location and remove the OEM bolts. See **Figure 4**.
5. Loosely install the Center Passenger Mounting Bracket (**item 6**) using the M8 hardware (**items 9-11**). See **Figures 3 and 5**.
6. Locate the Rear Passenger Mounting Bracket location and remove the OEM bolts. See **Figure 6**.
7. Loosely install the Rear Passenger Mounting Bracket (**item 8**) using the M8 hardware (**items 9-11**). See **Figures 3 and 7**.

Center Driver Mounting Bracket Location Shown
Passenger Similar



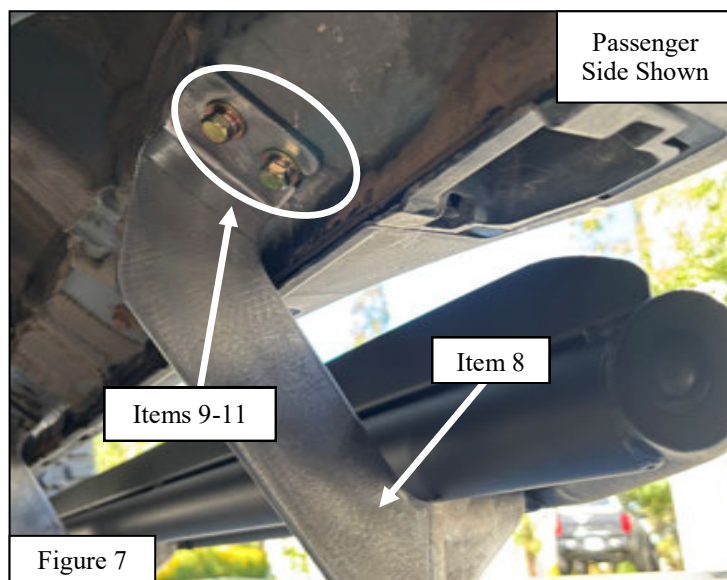
Passenger
Side Shown



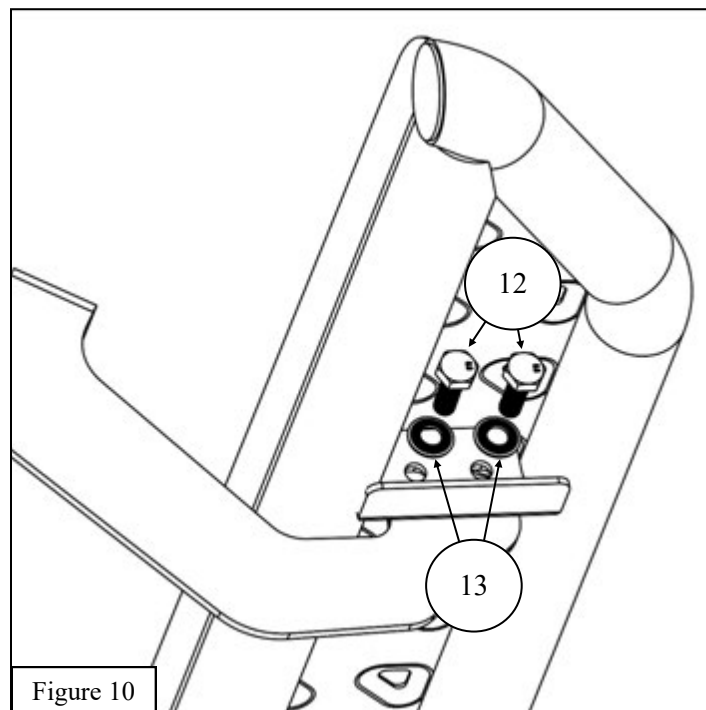
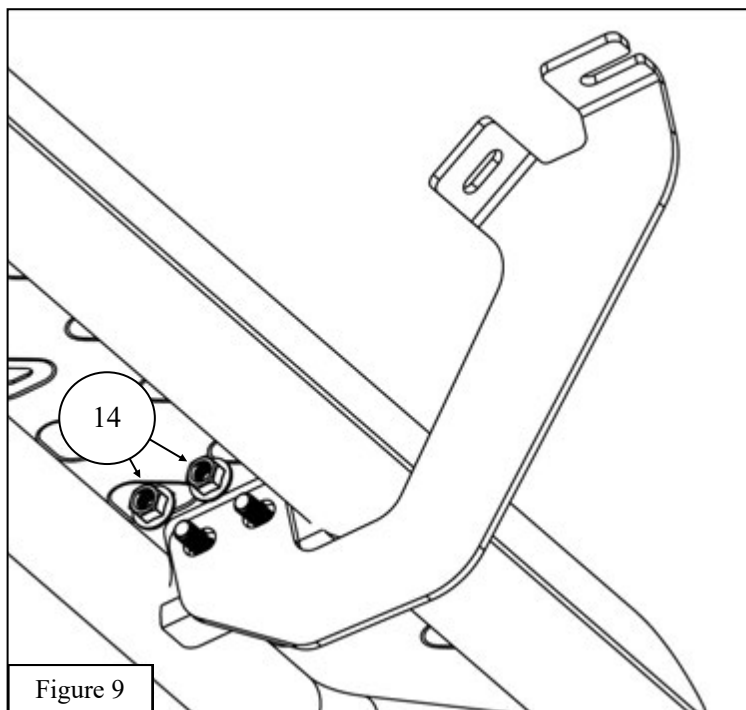
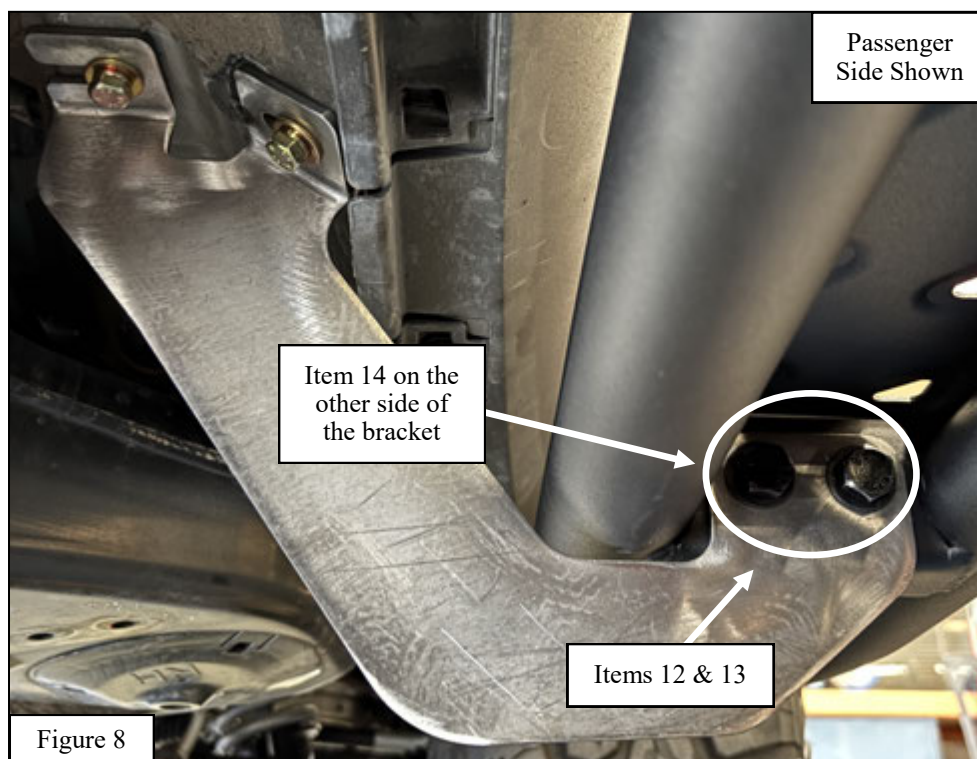
Rear Driver Mounting Bracket Location Shown
Passenger Similar



Passenger
Side Shown

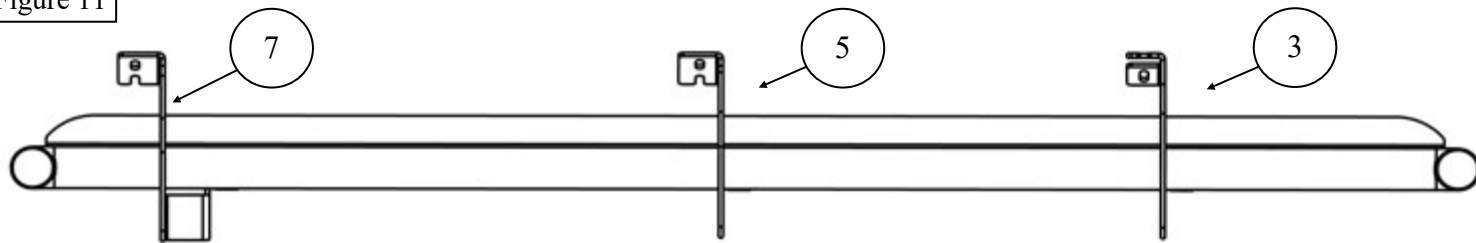


8. Repeat steps 2-7 on the driver side of the vehicle with the driver side brackets (**items 3, 5, and 7**).
9. Loosely install the Running Boards (**items 1 and 2**) to the mounting brackets using the supplied M10 hardware (**items 12-14**). See **Figures 8-10**.



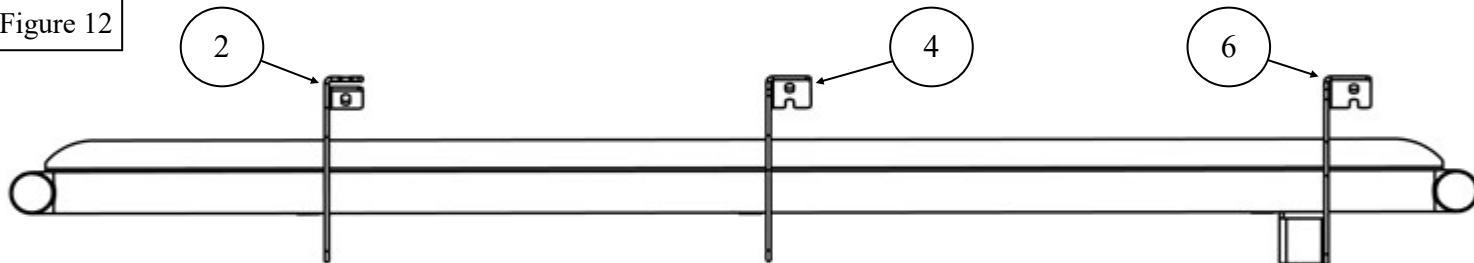
10. Align and adjust the running boards as needed. Tighten and torque all M8 hardware to 15-18 ft-lbs. and all M10 hardware to 35-38 ft-lbs.

Figure 11



Driver Side Shown

Figure 12



Passenger Side Shown



Westin Automotive Products, Inc.
320 W. Covina Blvd
San Dimas, Ca. 91773

INSTALLATION COMPLETE



CARE INSTRUCTIONS

- REGULAR WAXING IS RECOMMENDED. DO NOT USE ANY TYPE OF POLISH OR WAX THAT MAY CONTAIN ABRASIVES.
- STAINLESS STEEL PRODUCTS CAN BE CLEANED WITH MILD SOAP AND WATER. STAINLESS STEEL POLISH SHOULD BE USED TO POLISH SMALL SCRATCHES.
- GLOSS BLACK FINISHES SHOULD BE CLEANED WITH MILD SOAP AND WATER.



Westin Automotive Products, Inc.
320 W. Covina Blvd
San Dimas, Ca. 91773

Thank you for choosing Westin products
for additional installation assistance please call
Customer Service (800) 793-7846
www.westinautomotive.com



WARNING



Failure to follow these instructions could lead to death, personal injury, and / or property damage.

Failure to follow these instructions could lead to death, personal injury, and / or property damage.

FASTENERS:

All Westin supplied fasteners must be utilized and installed in accordance with the installation instructions and apply torque to the specifications as defined. **DOUBLE CHECK ALL FASTENERS BEFORE INITIAL USE, AND PERIODICALLY IN THE FUTURE TO ENSURE PROPER FUNCTION AND SAFETY.**

DRILLING:

Most Westin products do not require drilling for installation. If drilling is defined as required, use caution when drilling a vehicle. **FAILURE TO REVIEW AN AREA TO BE DRILLED MAY RESULT IN PERSONAL INJURY AND/OR INJURY TO OTHERS AS WELL AS VEHICLE DAMAGE.**

EYE PROTECTION:

ALWAYS WEAR SAFETY GLASSES OR GOGGLES DURING THE INSTALLATION PROCESS TO AVOID PERSONAL INJURY.

MAXIMUM TOWING/CARRYING CAPACITY: (if applicable)

The Westin Receiver Hitches will have a visible tow rating label affixed directly on the product. User should never exceed the vehicle manufacturers maximum tow and weight rating regardless of the capacity of the hitch. **FAILURE TO FOLLOW THESE GUIDELINES WILL VOID THE WESTIN WARRANTY AND MAY RESULT IN PERSONAL INJURY AND/OR INJURY TO OTHERS AS WELL AS VEHICLE DAMAGE.**

FOR CALIFORNIA RESIDENTS ONLY-PROP 65 WARNING:

Some products may contain chemicals such as DEHP, which can cause cancer, birth defects or other reproductive harm. For more info go to www.p65warnings.ca.gov



Westin Automotive Products, Inc.
320 W. Covina Blvd
San Dimas, Ca. 91773