

INSTALLATION INSTRUCTIONS

OUTLAW DROP RUNNING BOARDS



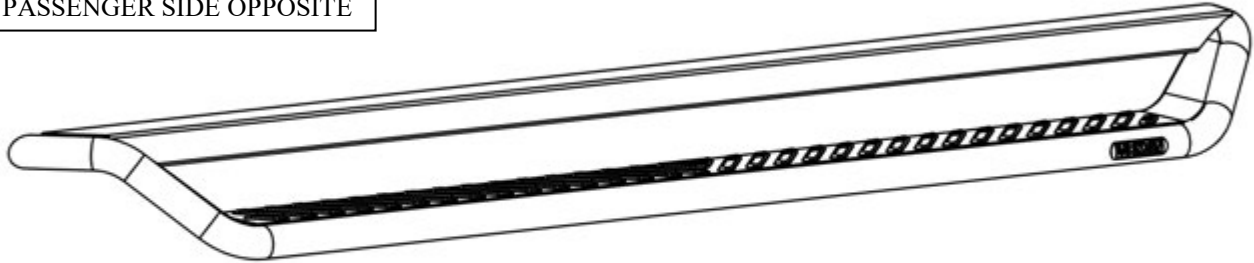
APPLICATION:
2019-2024 FORD RANGER SUPERCREW

PART NUMBER:
20-44155

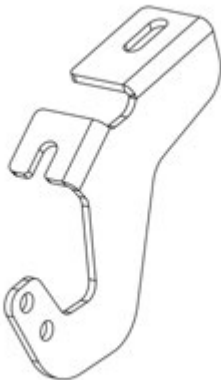
CONTENT			
ITEM	QUANTITY	DESCRIPTION	TOOLS NEEDED
1	1	DRIVER OUTLAW DROP RUNNING BOARD	17MM SOCKET
2	1	PASSENGER OUTLAW DROP RUNNING BOARD	TORQUE WRENCH
3	1	DRIVER MOUNTING BRACKET "A"	RATCHET
4	1	PASSENGER MOUNTING BRACKET "A"	
5	1	DRIVER MOUNTING BRACKET "B"	
6	1	PASSENGER MOUNTING BRACKET "B"	
7	1	DRIVER MOUNTING BRACKET "C"	
8	1	PASSENGER MOUNTING BRACKET "C"	
9	12	M10 HEX HEAD BOLT	
10	12	M10 SPLIT LOCK WASHER	
11	12	M10 FLAT WASHER	
12	12	M10 FLANGE HEX HEAD BOLT	
13	12	M10 SERRATED FLANGE NUT	

ANTI-SEIZE LUBRICANT MUST BE USED ON ALL STAINLESS STEEL FASTENERS TO PREVENT THREAD DAMAGE AND GALLING

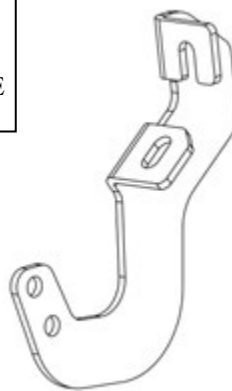
ITEM 1 - PASSENGER SIDE OPPOSITE



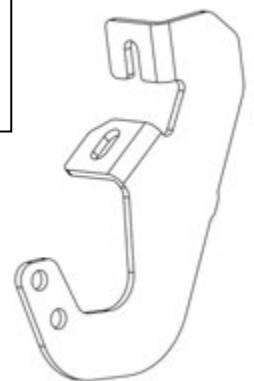
ITEM 2
PASSENGER
SIDE OPPOSITE



ITEM 3
PASSENGER
SIDE OPPOSITE



ITEM 4
PASSENGER
SIDE OPPOSITE



Westin Automotive Products, Inc.
320 W. Covina Blvd
San Dimas, Ca. 91773

Thank you for choosing Westin products
for additional installation assistance please call
Customer Service (800) 793-7846
www.westinautomotive.com

PROCEDURE

1. Remove contents from box, verify if all parts listed are present and free from damage.
Carefully read and understand all instructions before attempting installation.
Failure to identify damage before installation could lead to a rejection of any claim.
2. Locate the front driver side mounting location and remove the OEM bolts. See **Figure 1**.
3. Loosely install Driver Mounting Bracket "A" (**item 3**) using the M10 hardware (**items 9-11**). See **Figures 2 and 3**.

Figure 1

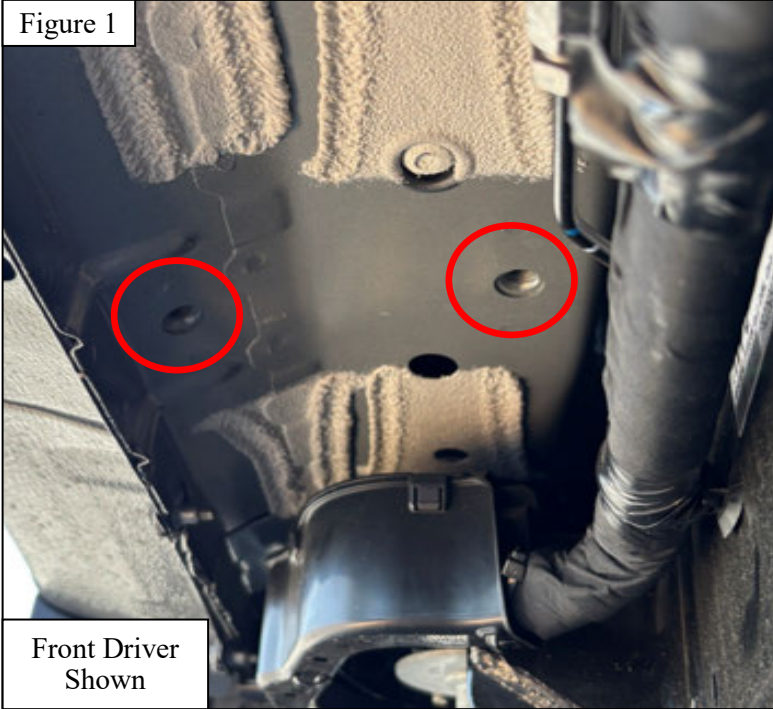


Figure 2

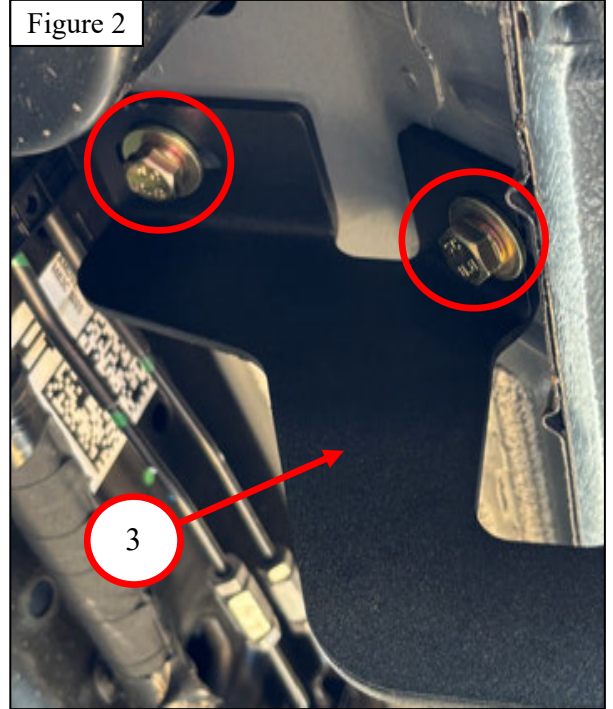
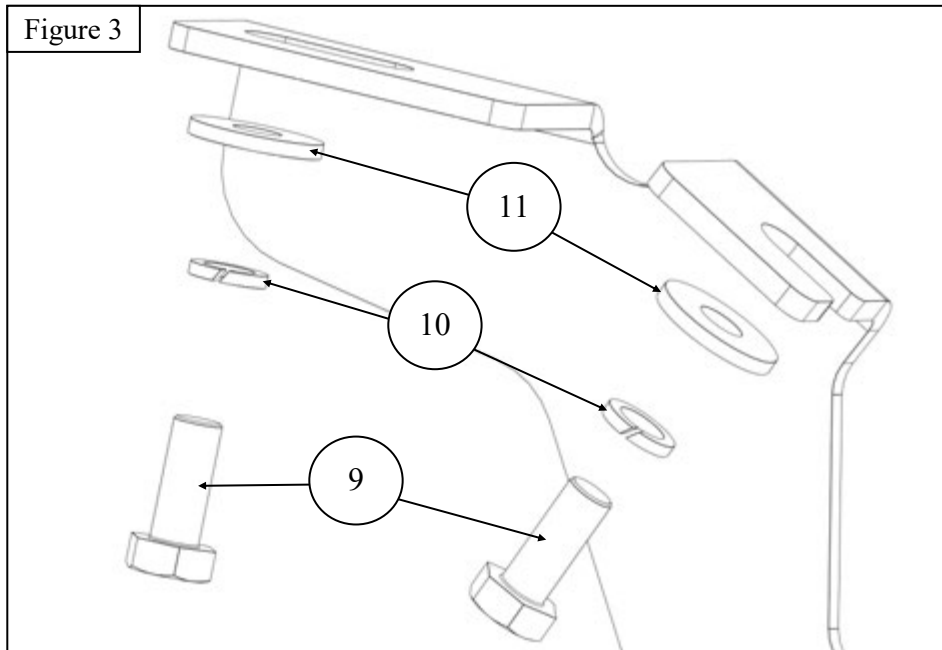


Figure 3



4. Locate the center driver side mounting location and remove the OEM bolts. See **Figure 4**.
5. Loosely install Driver Mounting Bracket "B" (**item 5**) using the M10 hardware (**items 9-11**). See **Figure 5**.
6. Locate the rear driver side mounting location and remove the OEM bolts. See **Figure 6**.
7. Loosely install Driver Mounting Bracket "C" (**item 7**) using the M10 hardware (**Items 9-11**). See **Figure 7**.
8. Repeat steps 2-7 for the passenger side of the vehicle with the passenger side brackets (**Items 9-11**).

Figure 4

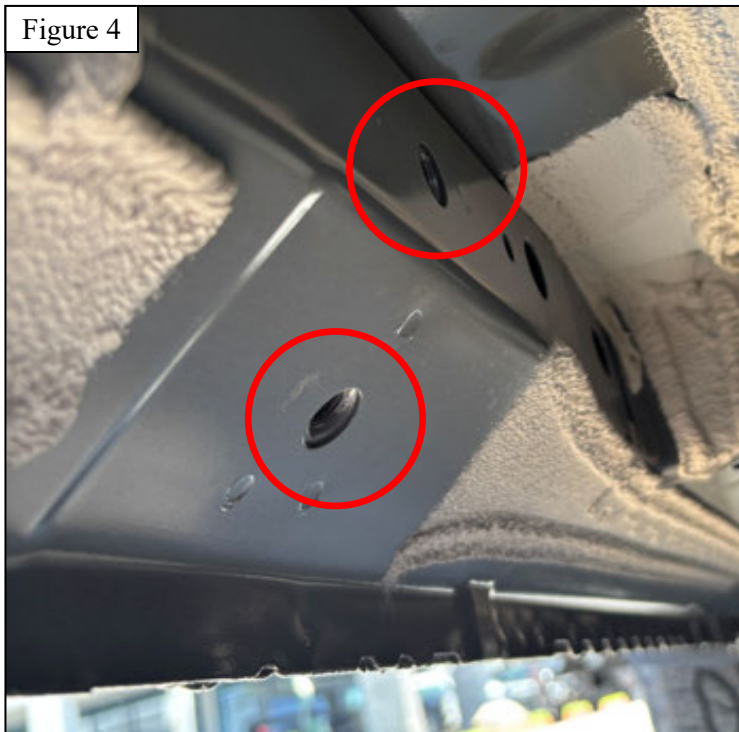


Figure 5

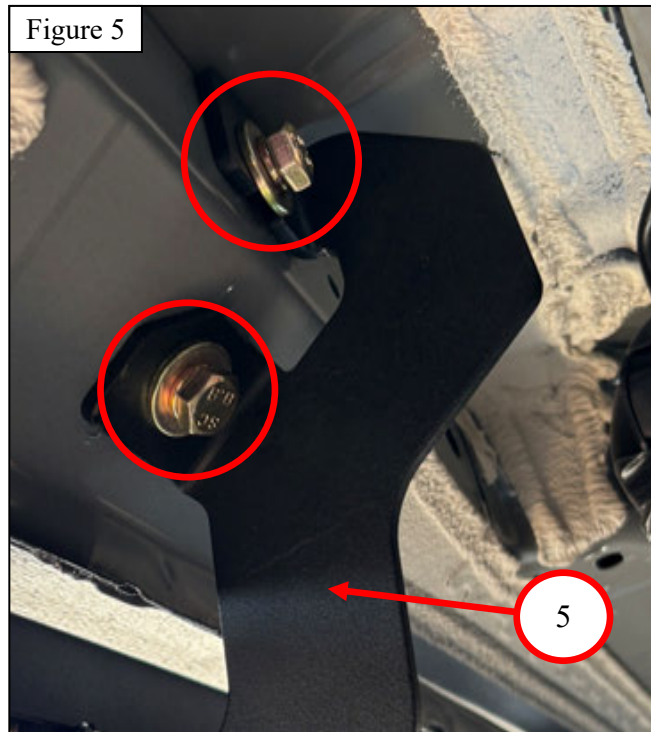


Figure 6

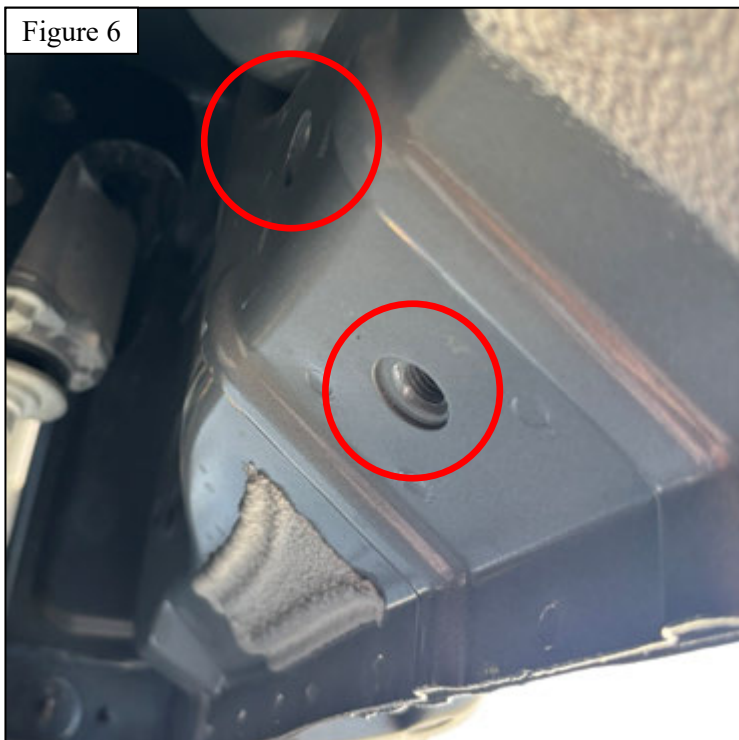
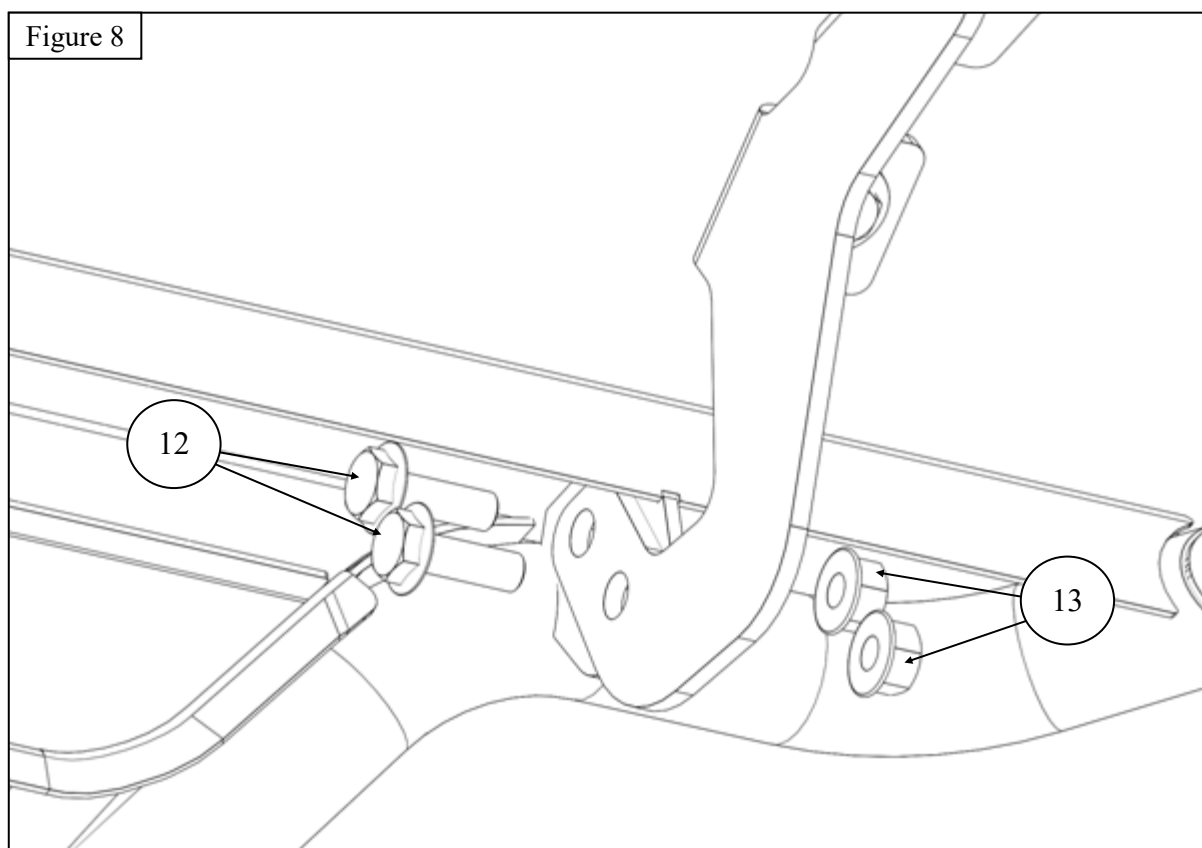


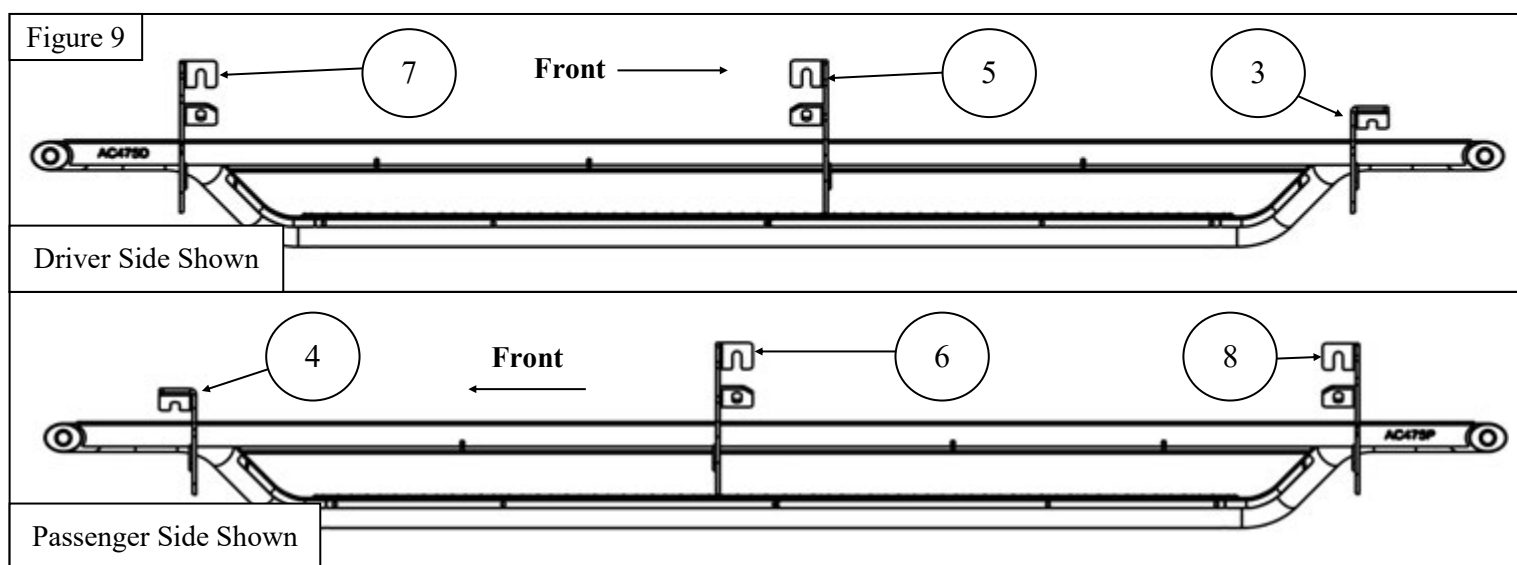
Figure 7



9. Loosely install the Outlaw Drop Running Boards (**items 1 and 2**) to the mounting brackets using the M10 hardware (**items 12 and 13**). See **Figures 8 and 9**.



10. Align and adjust the running boards as needed. Tighten and torque all M10 hardware to 38 ft-lbs.



INSTALLATION COMPLETE



CARE INSTRUCTIONS

- REGULAR WAXING IS RECOMMENDED. DO NOT USE ANY TYPE OF POLISH OR WAX THAT MAY CONTAIN ABRASIVES.
- STAINLESS STEEL PRODUCTS CAN BE CLEANED WITH MILD SOAP AND WATER. STAINLESS STEEL POLISH SHOULD BE USED TO POLISH SMALL SCRATCHES.
- GLOSS BLACK FINISHES SHOULD BE CLEANED WITH MILD SOAP AND WATER.

WESTIN

Westin Automotive Products, Inc.
320 W. Covina Blvd
San Dimas, Ca. 91773

Thank you for choosing Westin products
for additional installation assistance please call
Customer Service (800) 793-7846
www.westinautomotive.com



WARNING



Failure to follow these instructions could lead to death, personal injury, and / or property damage.

Failure to follow these instructions could lead to death, personal injury, and / or property damage.

FASTENERS:

All Westin supplied fasteners must be utilized and installed in accordance with the installation instructions and apply torque to the specifications as defined. **DOUBLE CHECK ALL FASTENERS BEFORE INITIAL USE, AND PERIODICALLY IN THE FUTURE TO ENSURE PROPER FUNCTION AND SAFETY.**

DRILLING:

Most Westin products do not require drilling for installation. If drilling is defined as required, use caution when drilling a vehicle. **FAILURE TO REVIEW AN AREA TO BE DRILLED MAY RESULT IN PERSONAL INJURY AND/OR INJURY TO OTHERS AS WELL AS VEHICLE DAMAGE.**

EYE PROTECTION:

ALWAYS WEAR SAFETY GLASSES OR GOGGLES DURING THE INSTALLATION PROCESS TO AVOID PERSONAL INJURY.

MAXIMUM TOWING/CARRYING CAPACITY: (if applicable)

The Westin Receiver Hitches will have a visible tow rating label affixed directly on the product. User should never exceed the vehicle manufacturers maximum tow and weight rating regardless of the capacity of the hitch. **FAILURE TO FOLLOW THESE GUIDELINES WILL VOID THE WESTIN WARRANTY AND MAY RESULT IN PERSONAL INJURY AND/OR INJURY TO OTHERS AS WELL AS VEHICLE DAMAGE.**

FOR CALIFORNIA RESIDENTS ONLY-PROP 65 WARNING:

Some products may contain chemicals such as DEHP, which can cause cancer, birth defects or other reproductive harm. For more info go to www.p65warnings.ca.gov



Westin Automotive Products, Inc.
320 W. Covina Blvd
San Dimas, Ca. 91773