

# INSTALLATION INSTRUCTIONS

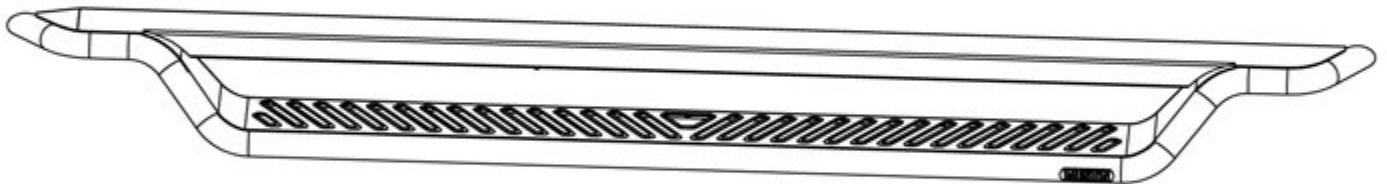
## OUTLAW DROP RUNNING BOARDS



**APPLICATION:**  
Toyota Tundra Double Cab 2007-2021  
**PART NUMBER:**  
20-43245

CONTENT			
ITEM	QUANTITY	DESCRIPTION	TOOLS NEEDED
1	1	DRIVER RUNNING BOARD ASSEMBLY	13MM SOCKET
2	1	PASSENGER RUNNING BOARD ASSEMBLY	13MM WRENCH
3	1	FRONT DRIVER SIDE MOUNTING BRACKET	16MM SOCKET
4	1	FRONT PASSENGER SIDE MOUNTING BRACKET	16MM WRENCH
5	1	CENTER DRIVER SIDE MOUNTING BRACKET	RATCHET
6	1	CENTER PASSENGER SIDE MOUNTING BRACKET	TORQUE WRENCH
7	1	REAR DRIVER SIDE MOUNTING BRACKET	
8	1	REAR PASSENGER SIDE MOUNTING BRACKET	
9	12	M8 HEX HEAD CAP BOLT	
10	12	M8 SPLIT LOCK WASHER	
11	12	M8 FLAT WASHER	
12	12	M10 SERRATED FLANGE HEX HEAD BOLT	
13	12	M10 SERRATED FLANGE HEX NUT	
ANTI-SEIZE LUBRICANT MUST BE USED ON ALL STAINLESS STEEL FASTENERS TO PREVENT THREAD DAMAGE AND GALLING			

ITEM 1 - Passenger Side Opposite



ITEM 3 - Passenger Side Opposite



ITEM 5 - Passenger Side Opposite

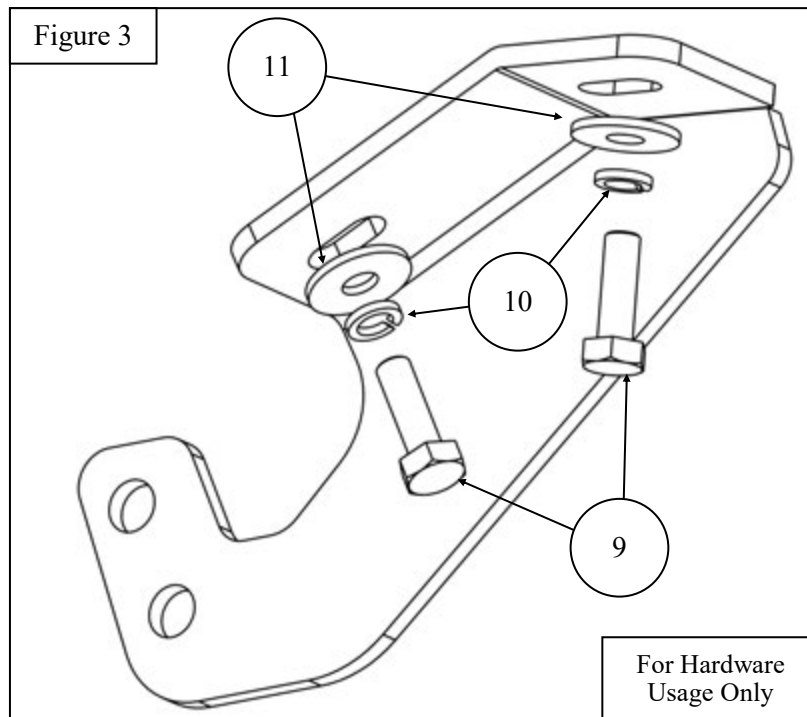
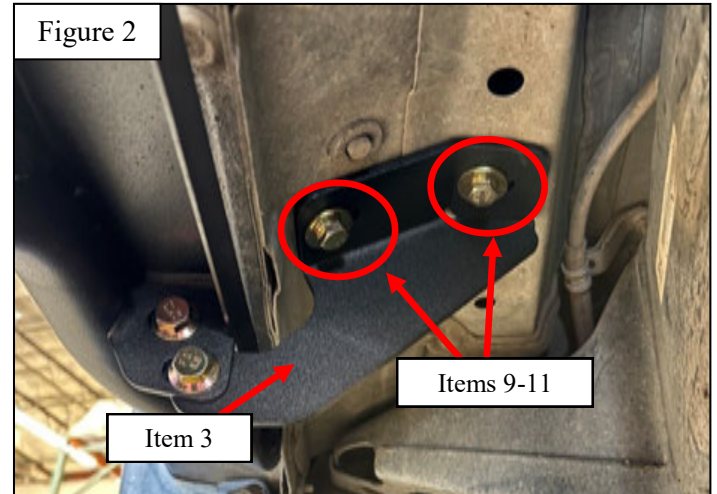
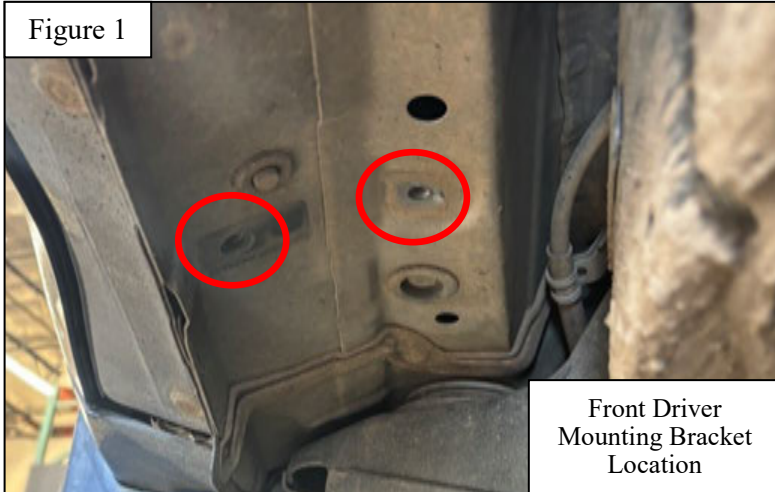


ITEM 7 - Passenger Side Opposite

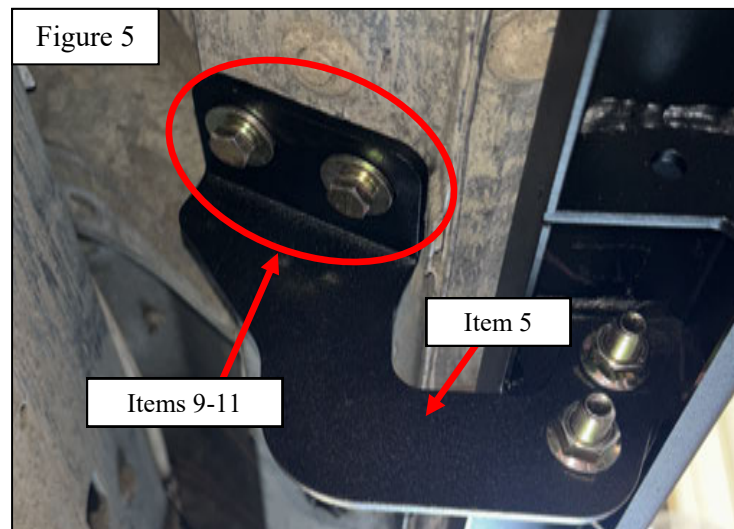
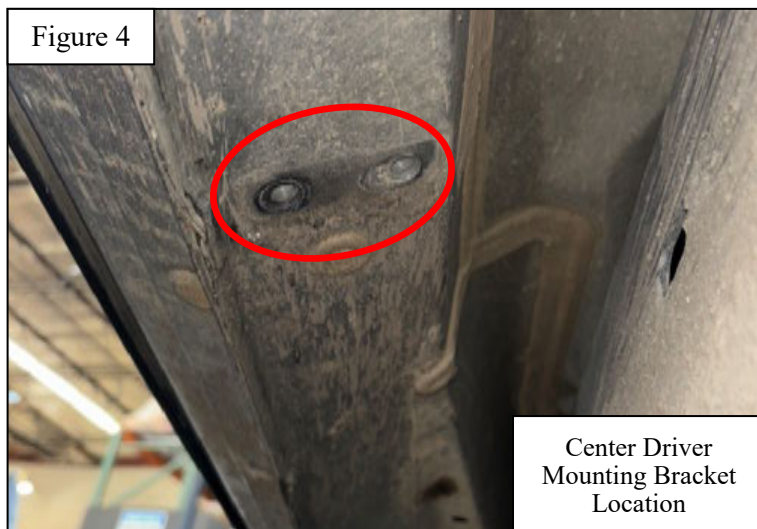


## PROCEDURE

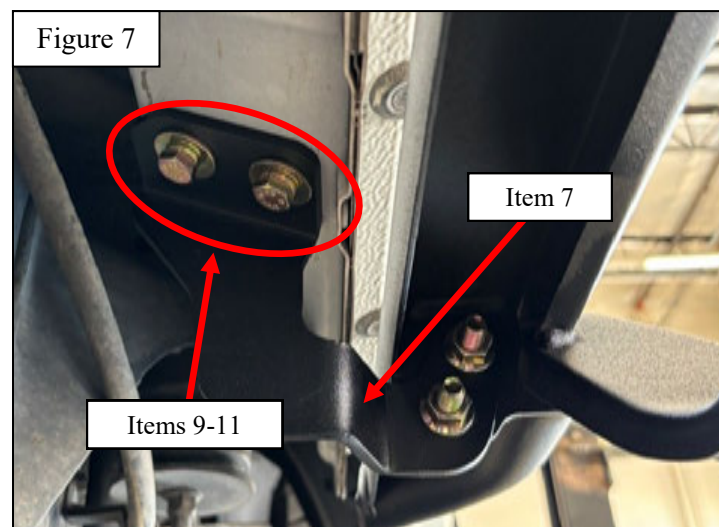
1. Remove contents from box, verify if all parts listed are present and free from damage.  
Carefully read and understand all instructions before attempting installation.  
**Failure to identify damage before installation could lead to a rejection of any claim.**
2. Locate the Front Driver Mounting Bracket location and remove the OEM bolts. See **Figure 1**.
3. Loosely install the Front Driver Side Mounting Bracket (**item 3**) using the provided M8 hardware (**items 9-11**).  
See **Figures 2 and 3**.



4. Locate the Center Driver Mounting Bracket location and remove the OEM bolts. See **Figure 4**.
5. Loosely install the Center Driver Side Mounting Bracket (**item 5**) using the M8 hardware (**items 9-11**). See **Figures 3 and 5**.



6. Locate the Rear Driver Mounting Bracket location and remove the OEM bolts. See **Figure 6**.
7. Loosely install the Rear Driver Side Mounting Bracket (**item 7**) using the M8 hardware (**items 9-11**). See **Figures 3 and 7**.
8. Repeat steps 2-7 for the passenger side of the vehicle with the passenger side mounting brackets (**items 4, 6, and 8**).





9. Loosely install the Outlaw Drop Running Boards (**items 1 and 2**) to the mounting brackets using the supplied M10 hardware (**items 12 and 13**). See **Figures 8-11**.

Figure 8

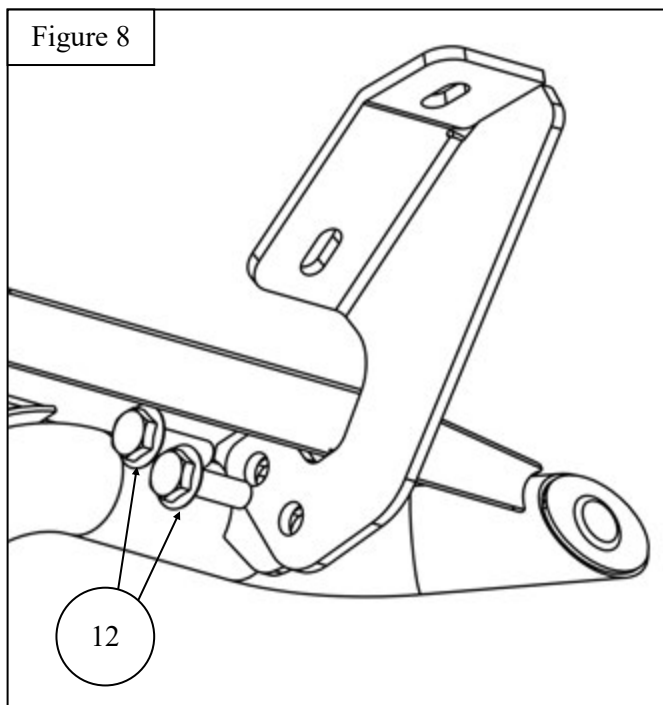


Figure 9

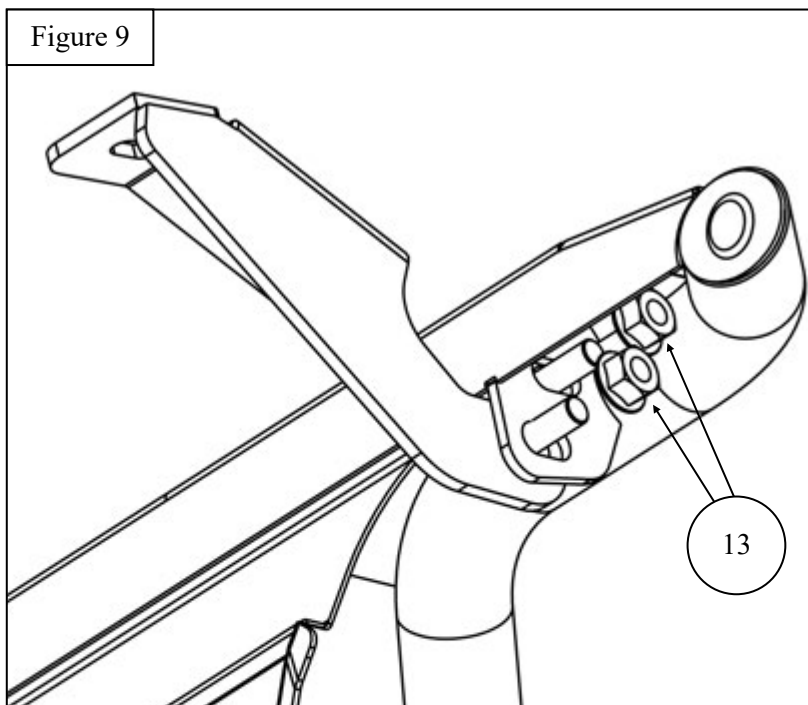


Figure 10

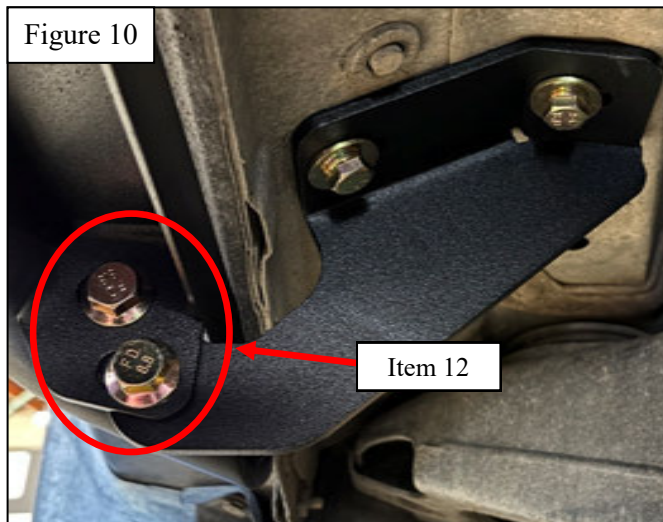
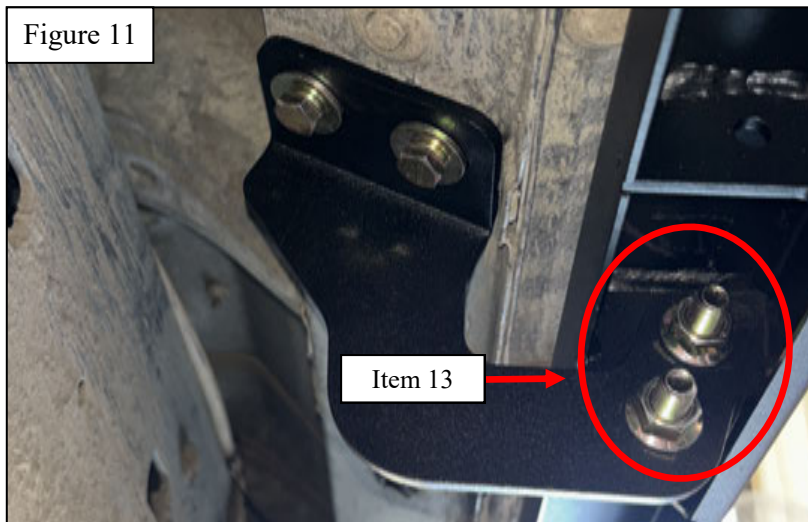


Figure 11



10. Align and adjust the running boards as needed. Tighten and torque all M8 hardware to 15-18 ft-lbs and all M10 hardware to 35-38 ft-lbs.

Figure 12

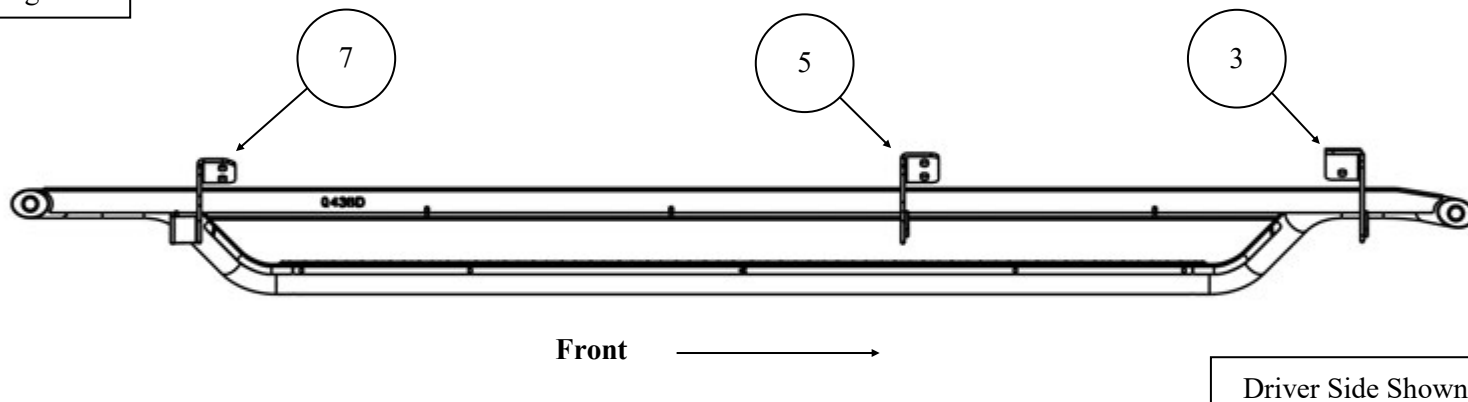
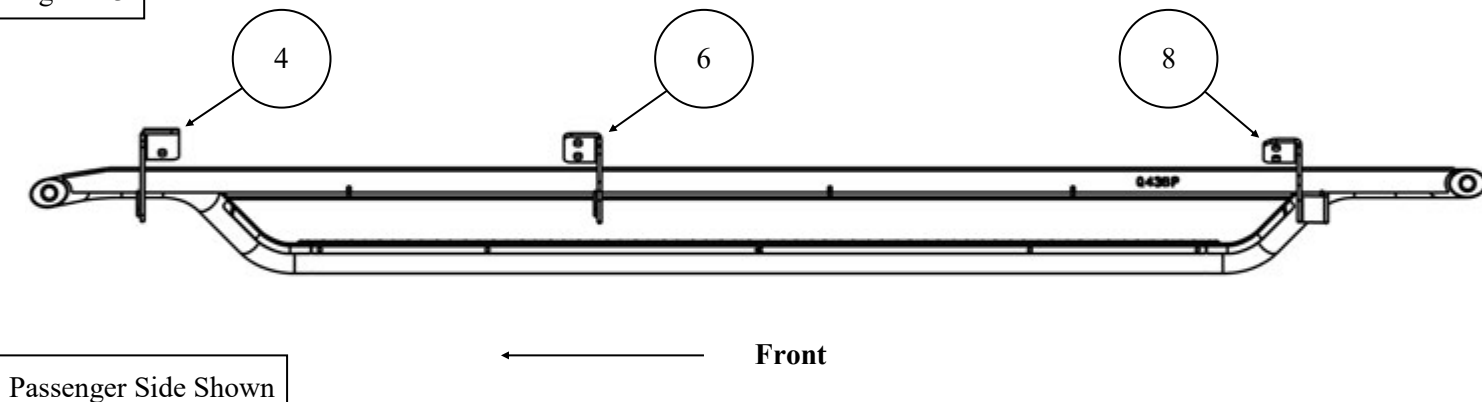


Figure 13



## INSTALLATION COMPLETE



### CARE INSTRUCTIONS

- REGULAR WAXING IS RECOMMENDED. DO NOT USE ANY TYPE OF POLISH OR WAX THAT MAY CONTAIN ABRASIVES.
- STAINLESS STEEL PRODUCTS CAN BE CLEANED WITH MILD SOAP AND WATER. STAINLESS STEEL POLISH SHOULD BE USED TO POLISH SMALL SCRATCHES.
- GLOSS BLACK FINISHES SHOULD BE CLEANED WITH MILD SOAP AND WATER.

**WESTIN**

Westin Automotive Products, Inc.  
320 W. Covina Blvd  
San Dimas, Ca. 91773

Thank you for choosing Westin products  
for additional installation assistance please call  
Customer Service (800) 793-7846  
[www.westinautomotive.com](http://www.westinautomotive.com)



## WARNING



Failure to follow these instructions could lead to death, personal injury, and / or property damage.

Failure to follow these instructions could lead to death, personal injury, and / or property damage.

### FASTENERS:

All Westin supplied fasteners must be utilized and installed in accordance with the installation instructions and apply torque to the specifications as defined. **DOUBLE CHECK ALL FASTENERS BEFORE INITIAL USE, AND PERIODICALLY IN THE FUTURE TO ENSURE PROPER FUNCTION AND SAFETY.**

### DRILLING:

Most Westin products do not require drilling for installation. If drilling is defined as required, use caution when drilling a vehicle. **FAILURE TO REVIEW AN AREA TO BE DRILLED MAY RESULT IN PERSONAL INJURY AND/OR INJURY TO OTHERS AS WELL AS VEHICLE DAMAGE.**

### EYE PROTECTION:

**ALWAYS WEAR SAFETY GLASSES OR GOGGLES DURING THE INSTALLATION PROCESS TO AVOID PERSONAL INJURY.**

### MAXIMUM TOWING/CARRYING CAPACITY: (if applicable)

The Westin Receiver Hitches will have a visible tow rating label affixed directly on the product. User should never exceed the vehicle manufacturers maximum tow and weight rating regardless of the capacity of the hitch. **FAILURE TO FOLLOW THESE GUIDELINES WILL VOID THE WESTIN WARRANTY AND MAY RESULT IN PERSONAL INJURY AND/OR INJURY TO OTHERS AS WELL AS VEHICLE DAMAGE.**

### FOR CALIFORNIA RESIDENTS ONLY-PROP 65 WARNING:

Some products may contain chemicals such as DEHP, which can cause cancer, birth defects or other reproductive harm. For more info go to [www.p65warnings.ca.gov](http://www.p65warnings.ca.gov)



Westin Automotive Products, Inc.  
320 W. Covina Blvd  
San Dimas, Ca. 91773