



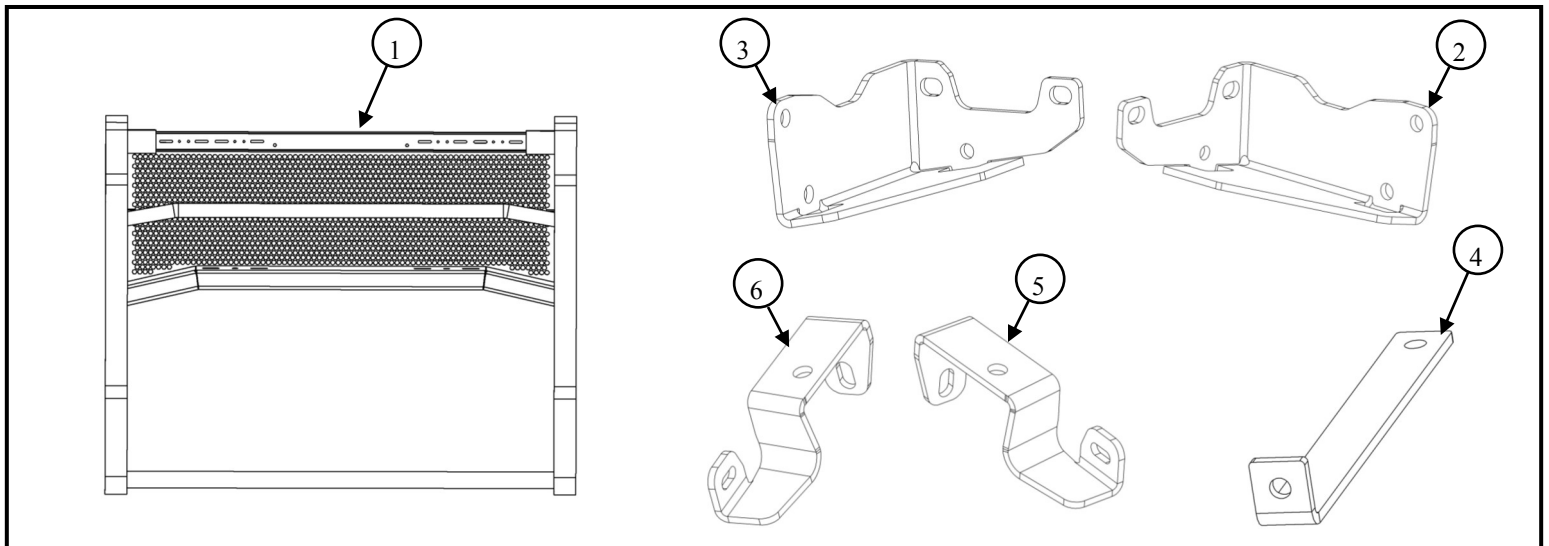
AUTOMOTIVE PRODUCTS, INC.

INSTALLATION INSTRUCTIONS

APPLICATION: 2013-2015 DODGE RAM 1500 SSV PUSH BAR ELITE XD
APP PART #: 36-53545

ITEM	QUANTITY	DESCRIPTION	TOOLS NEEDED
1	1	PUSH BAR ASSEMBLY	RATCHET
2,3	2	MOUNTING BRACKET DRIVER/PASSENGER	18MM WRENCH
4	2	LOWER SUPPORT STRAP	18MM SOCKET
5,6	2	UPPER SUPPORT STRAP DRIVER/PASSENGER	TORQUE WRENCH
7	4	8MM LONG SPACER	SOCKET EXTENS.
8	6	37MM LONG SPACER (USE ONLY WITH WINCH)	ALLEN KEY
9	4	M12 HEX SOCKET BUTTON HEAD SCREW (BLACK ZINC)	HAMMER
10	4	M12 FLAT WASHER (BLACK ZINC)	SCREWDRIVER
11	4	M12 BELLVILLE WASHER (BLACK ZINC)	15MM SOCKET
12	4	M12 HEX SOCKET BUTTON HEAD BOLT (BLACK ZINC)	16MM WRENCH
13	4	M12 SERRATED FLANGE NUT (BLACK ZINC)	10MM SOCKET
14	2	M10 BELLVILLE WASHER (BLACK ZINC)	8MM SOCKET
15	2	M10 HEX SOCKET BUTTON HEAD SCREW (BLACK ZINC)	
16	4	M10 SERRATED FLANGE NUT (BLACK ZINC)	
17	2	M10 FLANGE BOLT (BLACK ZINC)	
18	2	M10 HEX NUT (YELLOW ZINC)	
19	2	M10 SPLIT LOCK WASHER (YELLOW ZINC)	
20	2	LARGE M10 FLAT WASHER (YELLOW ZINC)	
21	2	M10 HEX HEAD CAP SCREW (YELLOW ZINC)	
22	2	SMALL M10 FLAT WASHER (YELLOW ZINC)	

ANTI-SEIZE LUBRICANT MUST BE USED ON ALL STAINLESS STEEL FASTENERS TO PREVENT THREAD DAMAGE AND GALLING .



Westin Automotive Products, Inc.
320W Covina Blvd
San Dimas, Ca. 91773

Thank You for choosing Westin products
For Additional installation assistance please call
Customer service (800) 793-7846
www.westinautomotive.com

1. Remove contents from box, verify if all parts listed are present and undamaged. Carefully read and understand all instructions before attempting installation. **Failure to identify damage before installation could lead to a rejection of any claim.**
Note: This product may be mounted stand-alone or in conjunction with Winch Tray P/N 46-23755 (sold separately).
2. Start by opening the hood and locating the clips retaining the radiator cover. Remove these clips with an appropriate tool. Refer to Figure 1.
3. Remove 4 screws holding top of grille to radiator support.
4. Detach four clips that attach the grille to the vehicle. Remove the grille. Refer to Figure 2 and 3. (Note: The clips may need to be gently pried off with a screwdriver.)
5. Remove tow hook pocket covers. Refer to Figure 4.
6. Locate two bolts that attach the bumper filler panel to the vehicle. Remove bolts from both sides of the vehicle. Open a panel to locate a hidden screw. Remove hidden screw on both the driver/passenger side. Gently pull on the filler panel to remove it. Refer to Figure 5 and 6.

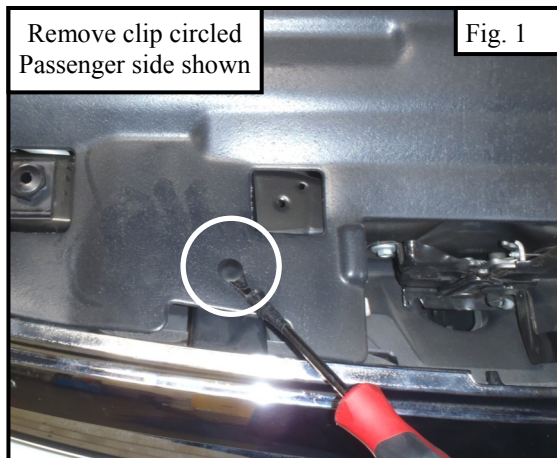


Fig. 1

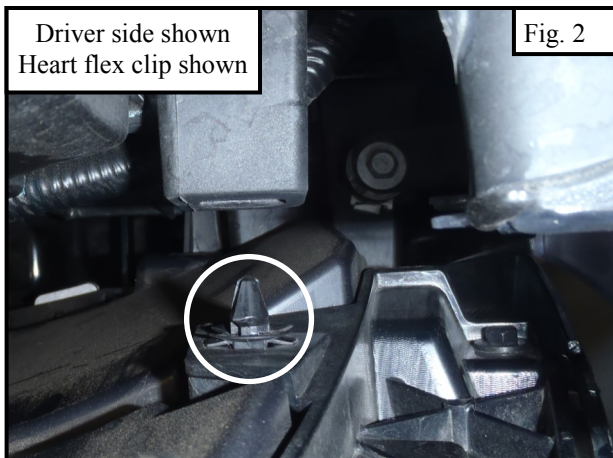


Fig. 2

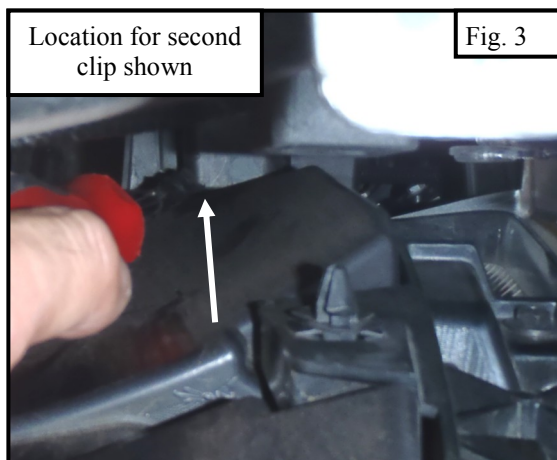


Fig. 3

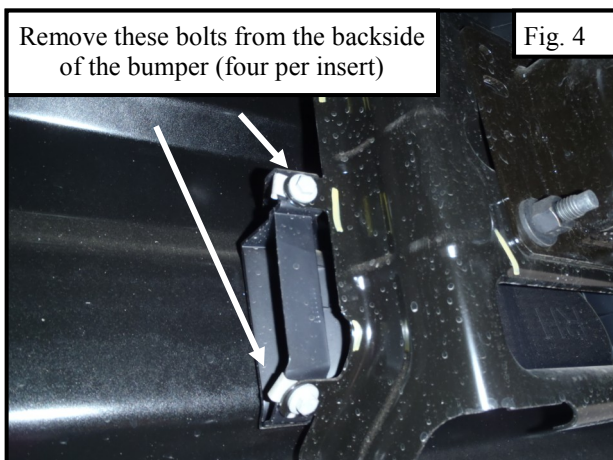


Fig. 4



Fig. 5

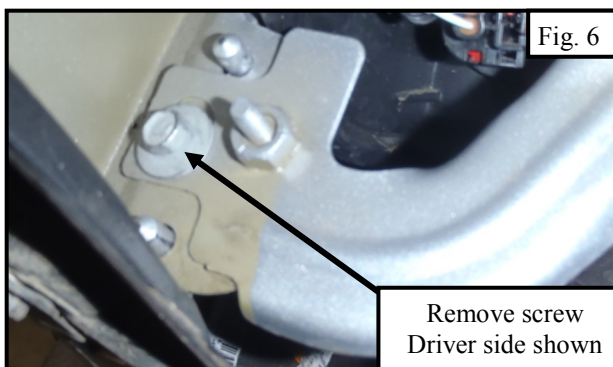


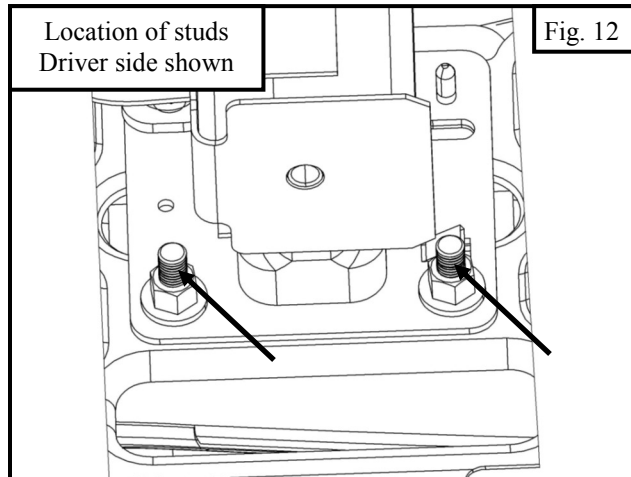
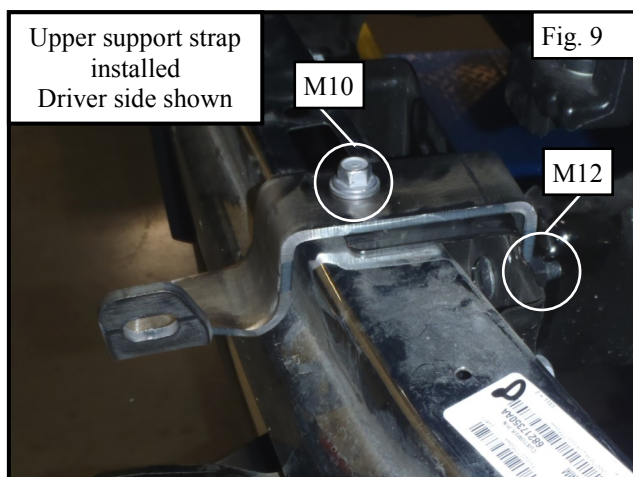
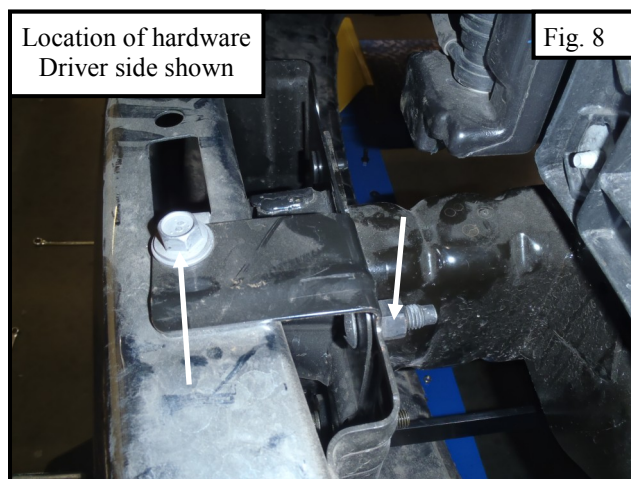
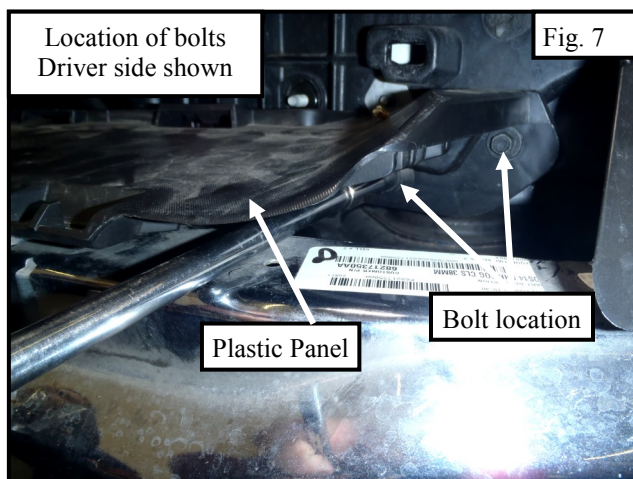
Fig. 6



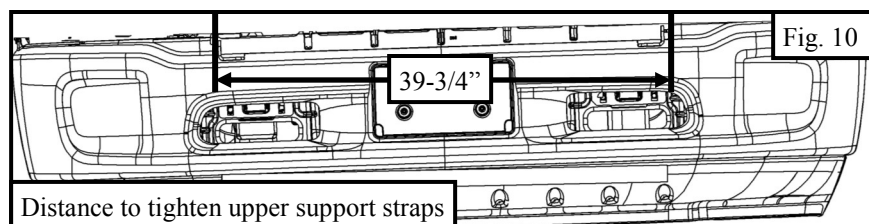
Westin Automotive Products, Inc.
320W Covina Blvd
San Dimas, Ca. 91773

Thank You for choosing Westin products
For Additional installation assistance please call
Customer service (800) 793-7846
www.westinautomotive.com

7. Locate the plastic panel above the bumper and remove it. Remove the four bolts with an appropriate tool. Arrows show location of bolts, refer to Figure 7.
8. Once the plastic panel is removed the location of installing the driver/passenger upper support straps is revealed. Locate and remove factory hardware. Hardware will be used to install the upper support straps (Item 5 & 6). Refer to Figure 8.
9. Align and adjust the upper support straps to 39-3/4" and then torque: M10 hardware to 30-55 ft-lbs./ M12 hardware to 50-55 ft-lbs. Refer to Figure 9 and Figure 10. (Note: Distance between the two upper support straps is measured from outer flange to outer flange.)

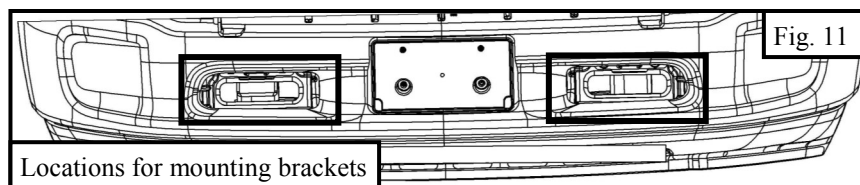


10. Reinstall the plastic panel, bumper filler panel, and grille.
11. If using the Push Bar Assembly in conjunction with the 46-23755 Winch Tray Kit (sold separately) refer to the installation sheet that comes with the kit. (Note: Item 8 is needed for installing the winch tray. Refer to Figure 14) Skip steps 12-16.
12. Locate two openings in the front bumper. Remove or trim covers. The two openings are the location of where to attach the driver/passenger mounting brackets. Refer to Figure 11. (Note: If equipped, factory tow hooks cannot be reused.)

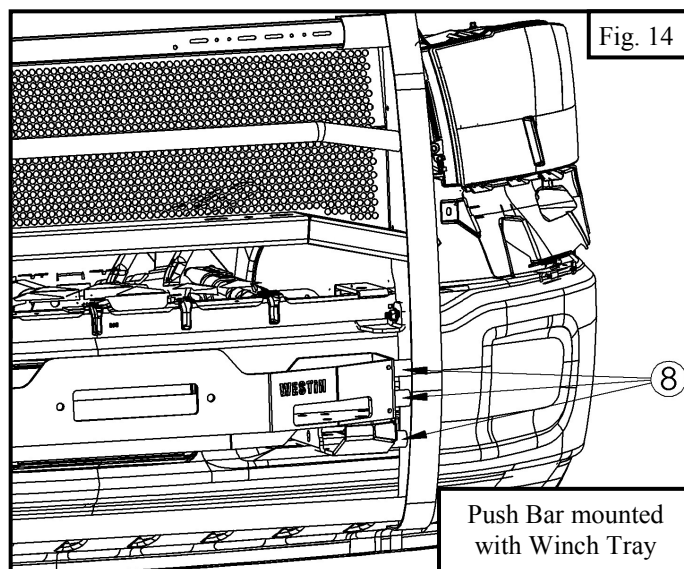
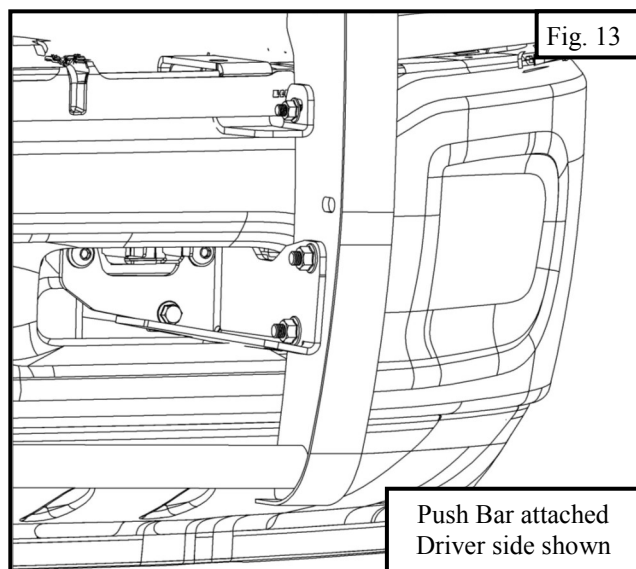


Westin Automotive Products, Inc.
320W Covina Blvd
San Dimas, Ca. 91773

Thank You for choosing Westin products
For Additional installation assistance please call
Customer service (800) 793-7846
www.westinautomotive.com

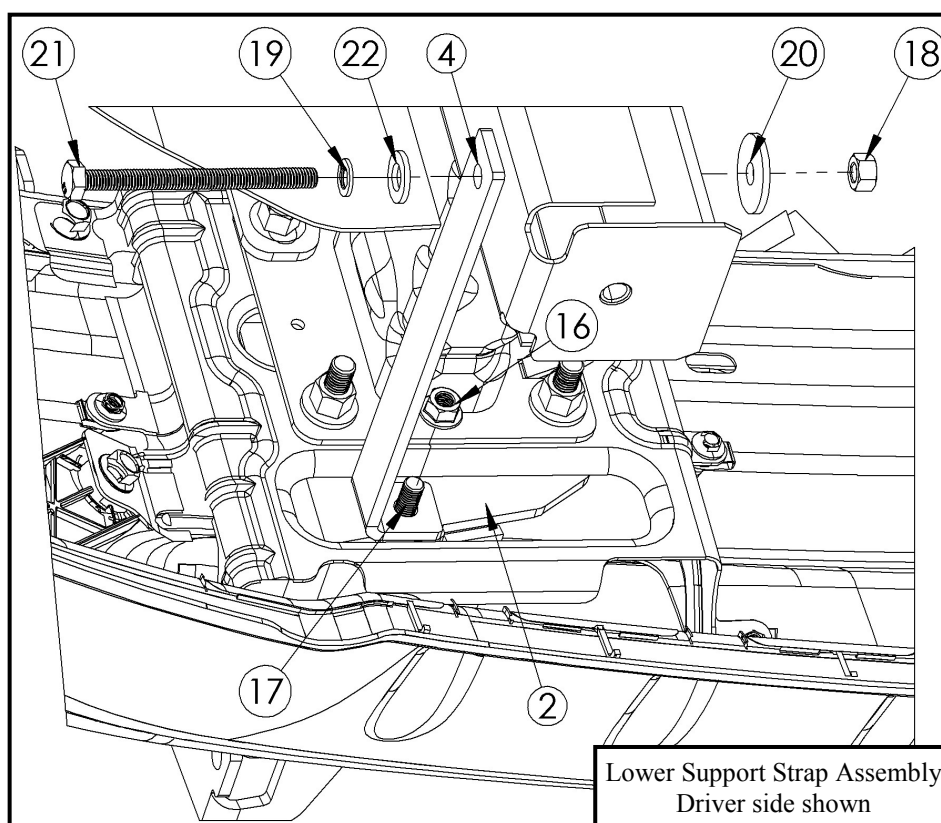
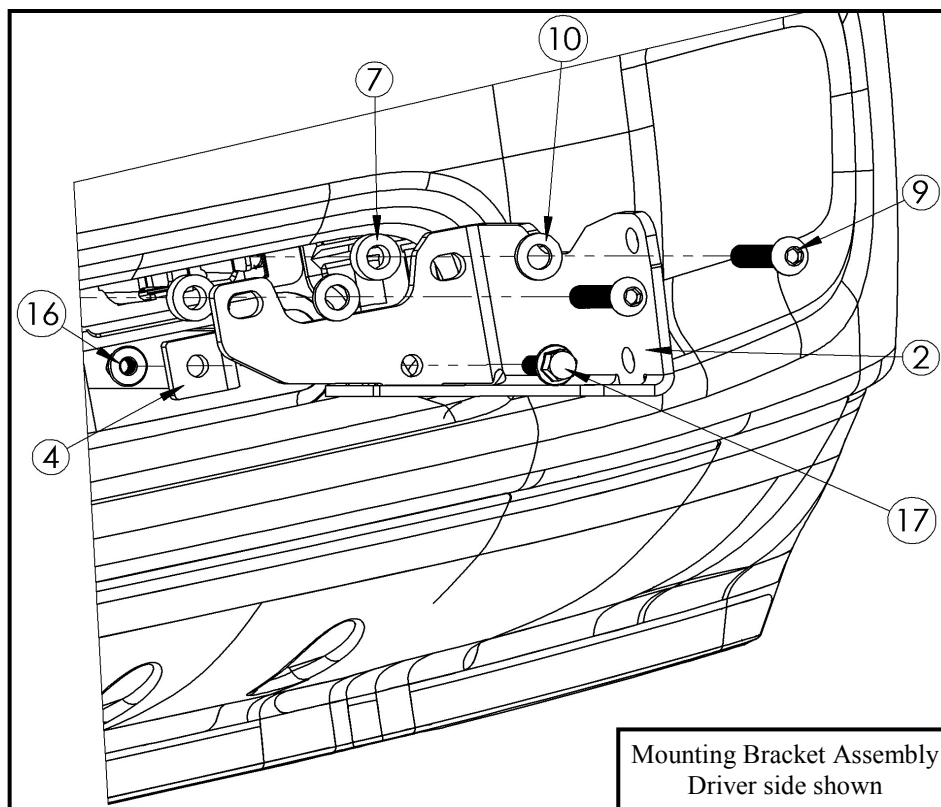


13. Behind the two openings there are lower studs on each side attached to frame. Unscrew the nuts then remove studs by using a hammer, by striking the end of the studs. If studs get stuck, use a screwdriver to pry studs out. Refer to Figure 12.
14. Align and loosely install the driver mounting bracket. Place (2) 8 MM spacers between brackets and frame. Using (2) M12 hex button head screw and (2) M12 flat washer loosely secure bracket. (Note: Nut and washer from frame will be used. Refer to Figure 12.) Refer to Mounting Bracket Assembly.
15. Locate a lower support strap and align it with the lowest hole of the mounting bracket. Loosely install strap using (1) M10 serrated flange nut and (1) M10 flange bolt. Using items 18-22 loosely secure the other end of the lower support strap to the frame. Refer to Lower Support Strap Assembly.
16. Repeat for steps 14-15 for passenger side.
17. With assistance, lift the Push Bar Assembly and loosely attach it to the mounting brackets and the upper support straps. Use items 14-16 to attach the upper support straps and use items 11-13 to attach mounting brackets. Refer to Front Push Bar Assembly and Figure 13.
18. Align and adjust as necessary then torque: M10 hardware to 30-35 ft-lbs. / M12 hardware to 50-55 ft-lbs.



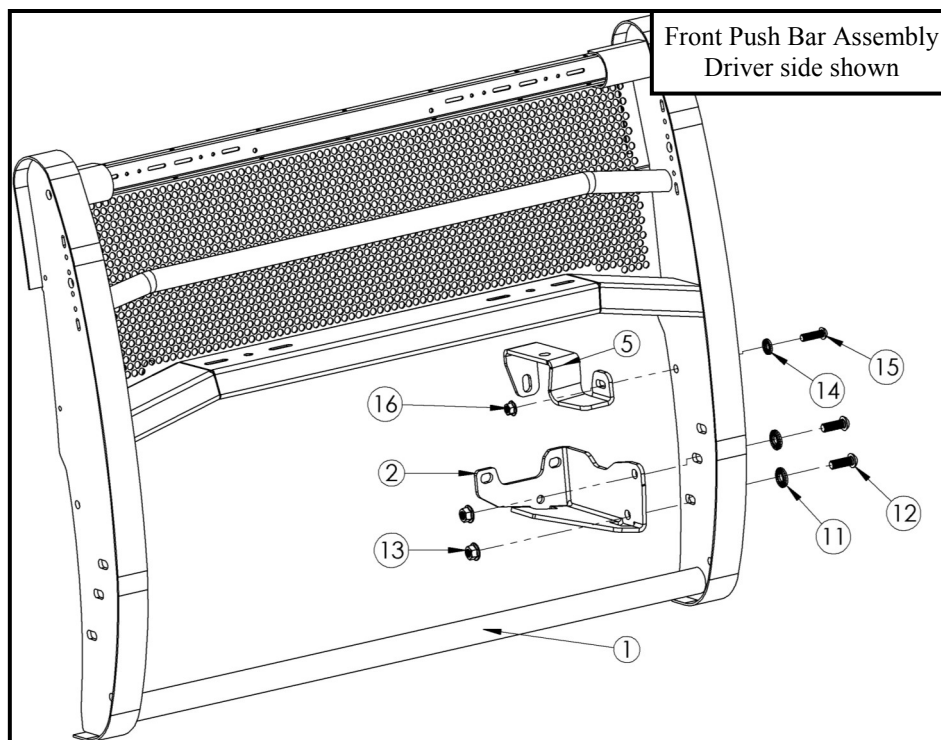
Westin Automotive Products, Inc.
320W Covina Blvd
San Dimas, Ca. 91773

Thank You for choosing Westin products
For Additional installation assistance please call
Customer service (800) 793-7846
www.westinautomotive.com



Westin Automotive Products, Inc.
320W Covina Blvd
San Dimas, Ca. 91773

Thank You for choosing Westin products
For Additional installation assistance please call
Customer service (800) 793-7846
www.westinautomotive.com



CARE INSTRUCTIONS

- REGULAR WAXING IS RECOMMENDED. DO NOT USE ANY TYPE OF POLISH OR WAX THAT MAY CONTAIN ABRASIVES.
- STAINLESS STEEL PRODUCTS CAN BE CLEANED WITH MILD SOAP AND WATER. STAINLESS STEEL POLISH SHOULD BE USED TO POLISH SMALL SCRATCHES.
- GLOSS BLACK FINISHES SHOULD BE CLEANED WITH MILD SOAP AND WATER.



Westin Automotive Products, Inc.
320W Covina Blvd
San Dimas, Ca. 91773

Thank You for choosing Westin products
For Additional installation assistance please call
Customer service (800) 793-7846
www.westinautomotive.com