



INSTRUCTIONS—INSTRUCCIONES—CONSIGNES

AUTOMOTIVE PRODUCTS, INC.

APPLICATION: 2010-13 DODGE RAM 2500/3500 HD
APP PART # 46-23555, 57-93550/57-93555, 45-93550/40-93555
MAX WINCH TRAY/WINCH MOUNTED SPORTSMAN/HDX GRILLE GUARD

ITEM	QUANTITY	DESCRIPTION	TOOLS NEEDED
1	1	WINCH TRAY	14MM SOCKET
2,3	2	WINCH TRAY MOUNTING BRACKET (2) DRIVERS SIDE, (3) PASSENGER SIDE	15MM SOCKET
4	8	M12 HEX HEAD BOLTS	SWIVEL SOCKET
5	8	M12 LOCK WASHERS	EXTENSIONS
6	16	M12 FLAT WASHERS	16MM SOCKET
7	8	M12 HEX NUTS	16MM WRENCH
8	8	M10 HEX HEAD BOLTS	18MM SOCKET
9	8	M10 LOCK WASHERS	18MM WRENCH
10	16	M10 FLAT WASHERS	RATCHET
11	8	M10 HEX NUTS	TORQUE WRENCH
12	6	M12 BUTTON HEAD BOLTS (STAINLESS STEEL) (INCLUDED IN OPTIONAL SPORTSMAN GRILLE GUARD)	
13	6	M12 LOCK WASHERS (STAINLESS STEEL) (INCLUDED IN OPTIONAL SPORTSMAN GRILLE GUARD)	
14	6	M12 HEX NUTS (STAINLESS STEEL) (INCLUDED IN OPTIONAL SPORTSMAN GRILLE GUARD)	
15	12	M12 FLAT WASHERS (STAINLESS STEEL) (INCLUDED IN OPTIONAL SPORTSMAN GRILLE GUARD)	
16	6	M12 HEX HEAD BOLTS (INCLUDED IN OPTIONAL HDX GRILLE GUARD)	
17	6	M12 LOCK WASHERS (INCLUDED IN OPTIONAL HDX GRILLE GUARD)	
18	6	M12 HEX NUTS (INCLUDED IN OPTIONAL HDX GRILLE GUARD)	
19	12	M12 FLAT WASHERS (INCLUDED IN OPTIONAL HDX GRILLE GUARD)	
20	4	M12 LONG BUTTON HEAD BOLTS (STAINLESS STEEL) (INCLUDED IN OPTIONAL HDX GRILLE GUARD)	
21	8	M12 LOCK WASHERS (STAINLESS STEEL) (INCLUDED IN OPTIONAL HDX GRILLE GUARD)	
22	20	M12 FLAT WASHERS (STAINLESS STEEL) (INCLUDED IN OPTIONAL HDX GRILLE GUARD)	
23	4	M12 BUTTON HEAD BOLTS (STAINLESS STEEL) (INCLUDED IN OPTIONAL HDX GRILLE GUARD)	
24	8	M12 HEX NUTS (STAINLESS STEEL) (INCLUDED IN OPTIONAL HDX GRILLE GUARD)	
25	4	SPACERS (INCLUDED IN OPTIONAL HDX GRILLE GUARD)	
26	2	SPACER BLOCKOUT PLATES (INCLUDED IN THE OPTIONAL HDX GRILLE GUARD)	
27	2	LOWER FRAME MOUNTING BRACKETS (INCLUDED IN THE OPTIONAL HDX GRILLE GUARD)	
28	2	LOWER GRILLE GUARD MOUNTING BRACKETS (INCLUDED IN THE OPTIONAL HDX GRILLE GUARD)	

ANTI-SEIZE LUBRICANT MUST BE USED ON ALL STAINLESS STEEL FASTENERS TO PREVENT THREAD DAMAGE AND GALLING

1. Remove contents from box, verify if all parts listed are present and free from damage. Carefully read and understand all instructions before attempting installation.
2. Starting from the front of the vehicle remove the factory tow hooks and hardware, set tow hooks aside Note: the tow hooks can not be re installed with this application. Assistance is recommended for removing the hardware attaching the tow hooks. Use the 14mm and 15mm socket to remove hardware, an extension and swivel socket are recommended to aid in removal. For vehicles without tow hooks skip to step 3.
3. Take the drivers side mounting bracket and attach it to the frame were the tow hook was previously installed (fig 1). Attach the bracket using (4) M10 hex head bolts, (4) M10 lock washers, (8) M10 flat washers, and (4) M10 hex nuts. The factory hardware may be used if desired. Do not fully tighten at this time. Repeat step 3 for the passenger side.
4. Take the winch tray and slide it into position on the previously installed mounting brackets (fig 2). Attach the winch tray to the mounting brackets using (8) M12 hex head bolts, (8) M12 lock washers, (16) M12 flat washers, and (8) M12 hex nuts (fig 2,3,& 4). Do not fully tighten at this time.



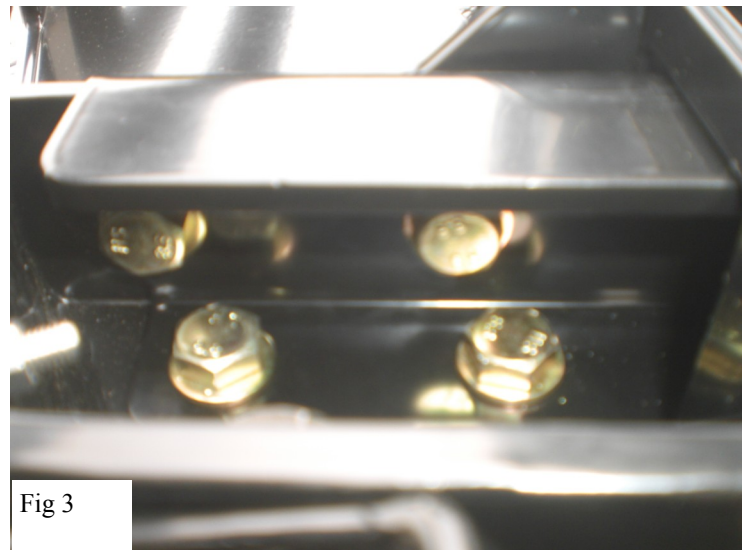
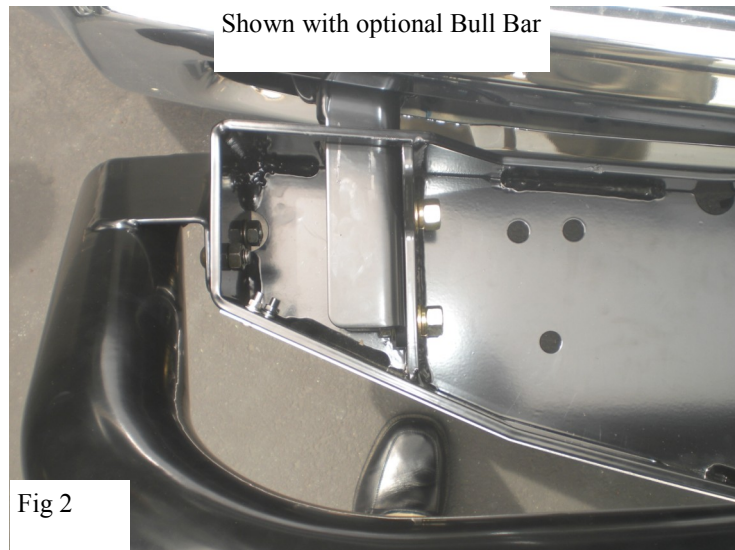
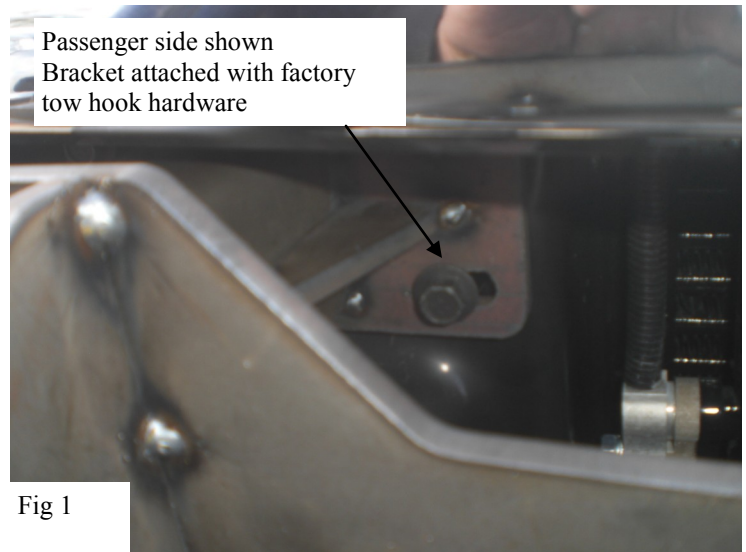
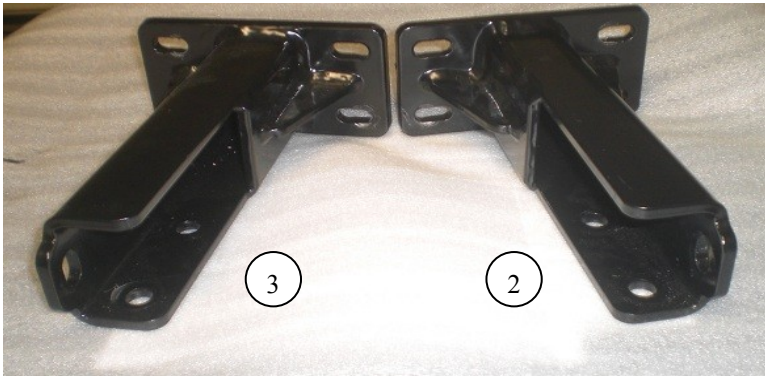
Westing Automotive Products, Inc.
5200 N. Irwindale Ave. Suite 220
Irwindale, Ca. 91706

Thank You for choosing Westin products
For Additional installation assistance please call
Customer service (800) 793-7846
www.westinautomotive.com

5. Align and adjust the winch tray as needed then fully tighten all hardware at this time. Torque all M12 hardware to 50-55 ft lbs and M10 to 40-45 ft lbs.
6. To install the optional sportsman grille guard, take the grille guard and align it to the outside of the winch tray.
7. Attach the sportsman grille guard to the winch tray using the M12 hardware included with it (fig 5). Do not fully tighten at this time.
8. Align and adjust the grille guard as needed the fully tighten all hardware at this time. Torque all M12 hardware to 50-55 ft lbs.
9. To install the optional HDX grille guard, take the drivers side spacer block out plate and attach it to the winch tray using (1) M12 hex head bolt, (2) M12 flat washers, (1) M12 lock washer, and (1) M12 hex nut. Repeat this step for the passenger side (fig 6). Do not fully tighten at this time.
10. Move underneath the drivers side of the vehicle and locate the outer bumper mounting bolt, attach the lower frame mounting bracket using the factory hardware (fig 7). Repeat this step for the passenger side.
11. Attach the drivers side lower grille guard mounting bracket to the previously installed bracket in step 10, attach using (2) M12 hex head bolts, (4) M12 flat washers, (2) M12 lock washers, and (2) M12 hex nuts(fig 7). Do not fully tighten at this time. Repeat for passenger side
12. Take the HDX grille guard and lay it face down in front of the vehicle. Attach the grille guard to the lower mounting brackets loosely with (2) M12 button head bolts (stainless steel), (4) M12 flat washers (stainless steel), (2) M12 lock washers (stainless steel), and (2) M12 hex nuts (stainless steel). Swing the grille guard up towards the vehicle and place the (4) spacers in between the winch tray and the grille guard mounting points. Attach using (4) M12 long button head bolts (stainless steel), (8) M12 flat washers (stainless steel), (4) M12 lock washers (stainless steel), and (4) M12 hex nuts (stainless steel) (fig 8). Do not fully tighten at this time. Attach the grille guard to the lower mounting brackets using (2) M12 button head bolts (stainless steel), (4) M12 flat washers (stainless steel), (2) M12 lock washers (stainless steel), and (2) M12 hex nuts (stainless steel) (fig 9). Do not fully tighten at this time.
13. Align and adjust the grille guard as needed the fully tighten all hardware at this time. Torque all M12 hardware to 50-55 ft lbs.

CARE INSTRUCTIONS

- REGULAR WAXING IS RECOMMENDED. DO NOT USE ANY TYPE OF POLISH OR WAX THAT MAY CONTAIN ABRASIVES
- STAINLESS STEEL PRODUCTS CAN BE CLEANED WITH MILD SOAP AND WATER. STAINLESS STEEL POLISH SHOULD BE USED TO POLISH SMALL SCRATCHES.
- GLOSS BLACK FINISHES SHOULD BE CLEANED WITH MILD SOAP



Westin Automotive Products, Inc.
5200 N. Irwindale Ave. Suite 220
Irwindale, Ca. 91706

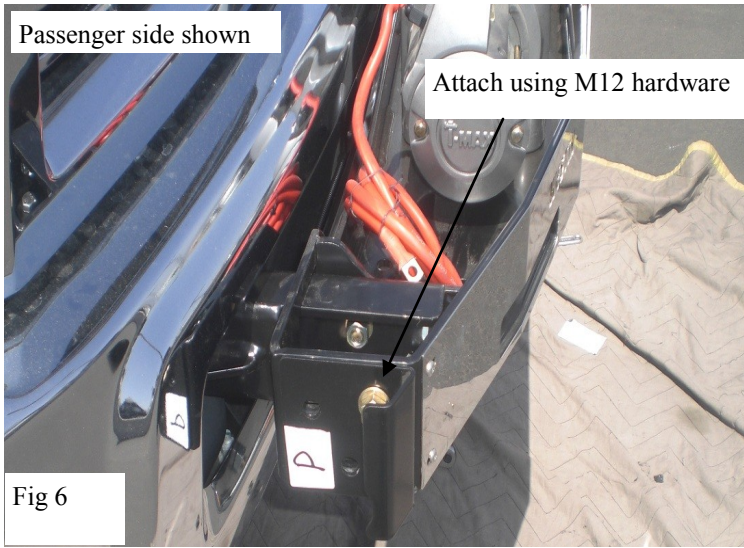
Thank You for choosing Westin products
For Additional installation assistance please call
Customer service (800) 793-7846
www.westinautomotive.com



Fig 4



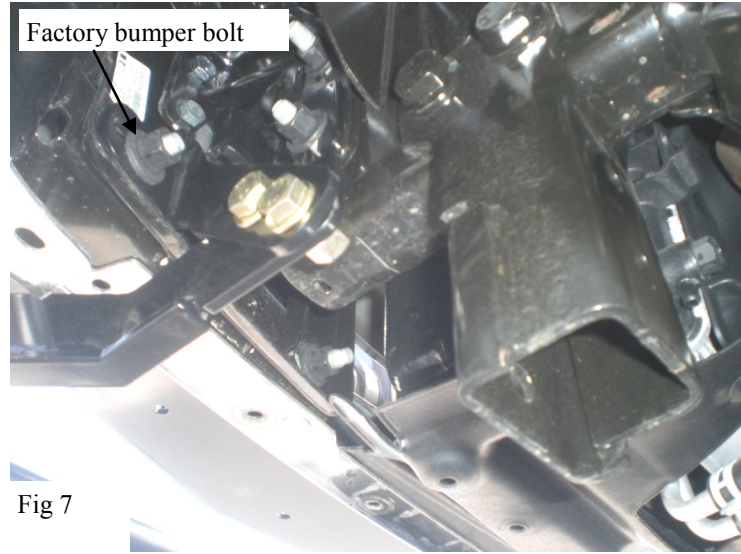
Fig 5



Passenger side shown

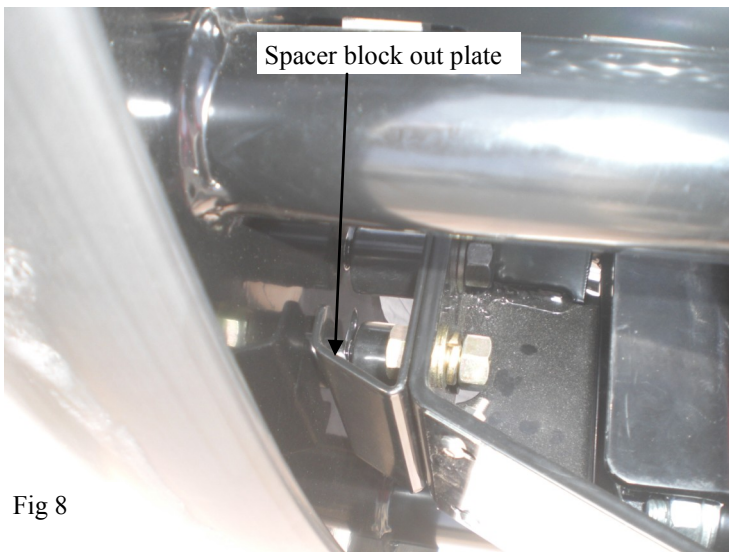
Attach using M12 hardware

Fig 6



Factory bumper bolt

Fig 7



Spacer block out plate

Fig 8



Fig 9



Westing Automotive Products, Inc.
5200 N. Irwindale Ave. Suite 220
Irwindale, Ca. 91706

5/17/12

P.N.: 75-0150-RevB

ECO #: W12-0083

PG-3

Thank You for choosing Westin products
For Additional installation assistance please call
Customer service (800) 793-7846
www.westinautomotive.com

Installation complete, shown with optional
Bull Bar and Faceplate



Shown with optional HDX grille guard



Shown with optional Sportsman grille guard



Westing Automotive Products, Inc.
5200 N. Irwindale Ave. Suite 220
Irwindale, Ca. 91706

5/17/12

P.N.: 75-0150-RevB

ECO #: W12-0083

PG-4

Thank You for choosing Westin products
For Additional installation assistance please call
Customer service (800) 793-7846
www.westinautomotive.com