



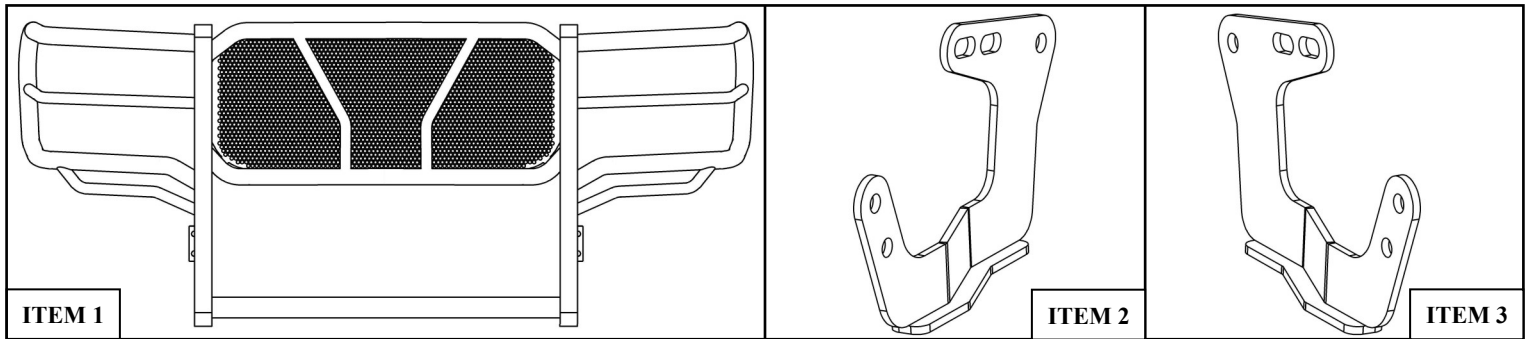
# INSTALLATION INSTRUCTIONS

**HDX GRILLE GUARD**  
**APPLICATION:**  
 2011-2016 Ford F250/350/450  
**PART NUMBER:**  
 57-2370, 57-2375

AUTOMOTIVE PRODUCTS,

ITEM	QUANTITY	DESCRIPTION	TOOLS NEEDED
1	1	GRILLE GUARD	18MM SOCKET
2,3	2	MOUNTING BRACKET, DRIVER (2) AND PASSENGER (3)	18MM WRENCH
4	2	M12 HEX HEAD BOLTS	RATCHET
5	2	M12 STUD PLATES	TORQUE WRENCH
6	6	M12 FLAT WASHERS	
7	4	M12 LOCK WASHERS	
8	4	M12 HEX NUTS	
9	4	M12 HEX HEAD BOLTS (BLACK STAINLESS)	
10	8	M12 FLAT WASHERS (BLACK STAINLESS)	
11	4	M12 LOCK WASHERS (BLACK STAINLESS)	
12	4	M12 HEX NUTS (BLACK STAINLESS)	
13	2	PLASTIC RETAINERS	

**ANTI-SEIZE LUBRICANT MUST BE USED ON ALL STAINLESS STEEL FASTENERS TO PREVENT THREAD DAMAGE AND GALLING**



## PROCEDURE

- Remove contents from box, verify if all parts listed are present and free from damage. Carefully read and understand all instructions before attempting installation.  
**Failure to identify damage before installation could lead to a rejection of any claim.**
- Starting underneath the front of the vehicle. Determine if your vehicle is equipped with factory frame horns, if so the factory hardware will be used to install the mounting brackets ( **Figure 1a**), if not equipped attach by locating the factory slot and hole on the outside of the drivers side frame. Insert (1) M12 stud plate into the slot in the frame and thread (1) plastic retainer onto the stud plate to keep it from falling into the frame ( **Figure 1b**).
- Take the drivers side mounting bracket and attach it to the previously installed stud plate using (1) M12 flat washer, (1) M12 lock washer, and (1) M12 hex nut. Attach the front mounting point using (1) M12 hex head bolt, (2) M12 flat washers, (1) M12 lock washer and (1) M12 hex nut ( **Figure 2**). Do not fully tighten at this time. Repeat this step for passenger side.

**Note: The lower plastic valance must be trimmed to allow clearance of the mounting bracket.**



Westin Automotive Products, Inc.  
 320 W. Covina Blvd  
 San Dimas, Ca. 91773

Thank you for choosing Westin products  
 for additional installation assistance please call  
 Customer Service (800) 793-7846

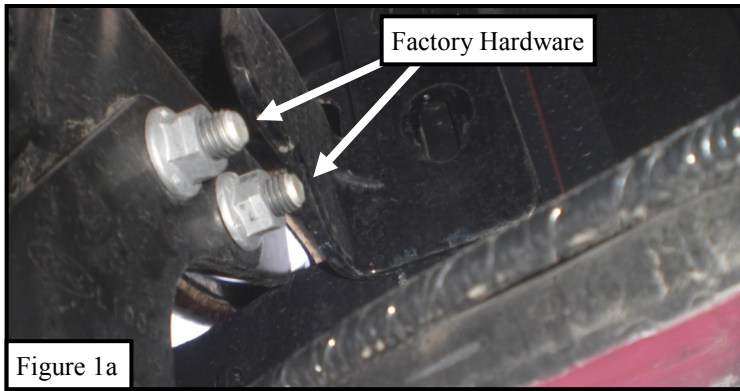


Figure 1a

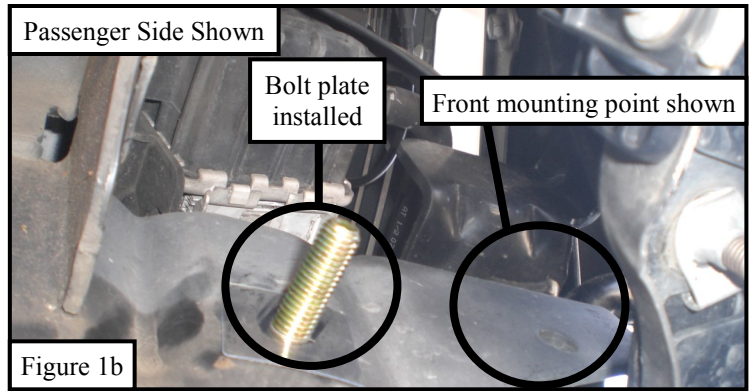


Figure 1b

4. Move to the front of the bumper and remove the (4) factory bumper bolts. **Note:** The (4) factory bumper bolts and the (2) factory nut plates will be used to attach the grille guard. (**Figure 3**)

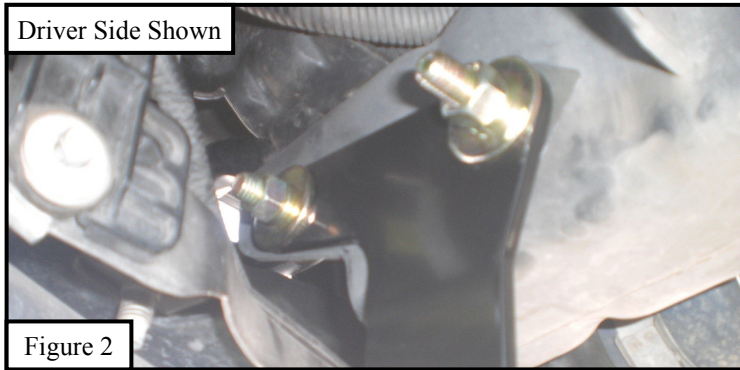


Figure 2

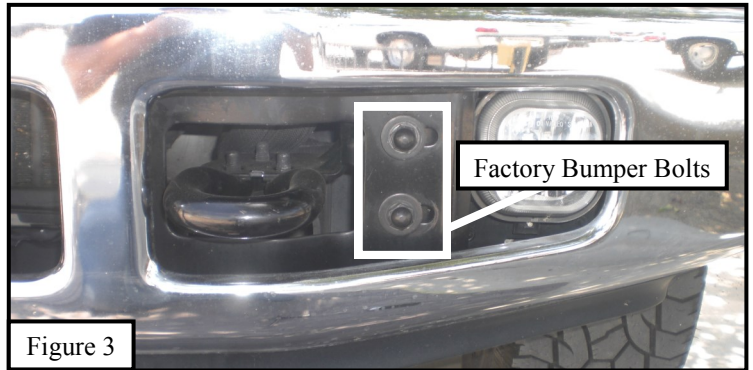


Figure 3

5. With assistance, take the grille guard and align it with the mounting brackets and the factory bumper bolt locations. Attach the grille guard to the lower brackets using (4) M12 hex head bolts (stainless), (8) M12 flat washers (stainless), (4) M12 lock washers (stainless) and (4) M12 hex nuts (stainless) (**Figures 4 and 5**).

6. Attach the upper grille guard mounting tabs using the (4) factory bumper bolts, install them as they were removed (**Figures 5 and 6**). Do not fully tighten at this time.

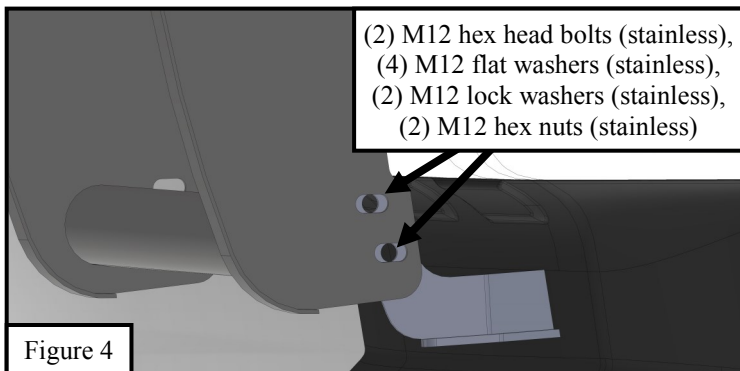


Figure 4



Figure 5

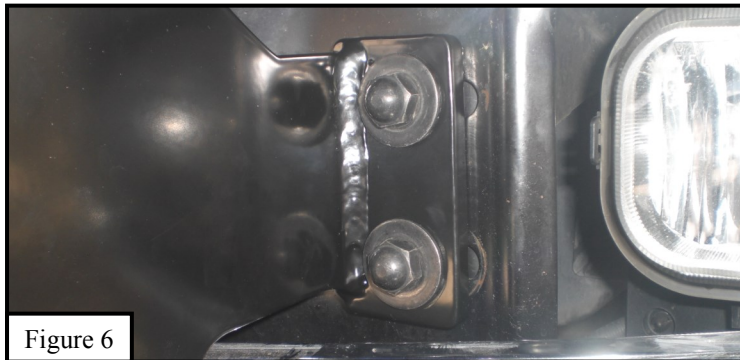


Figure 6

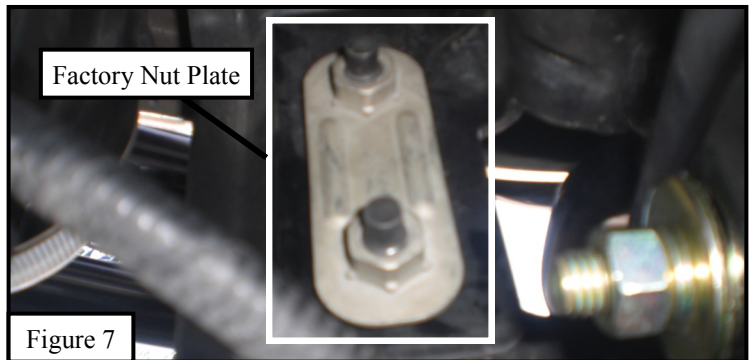


Figure 7

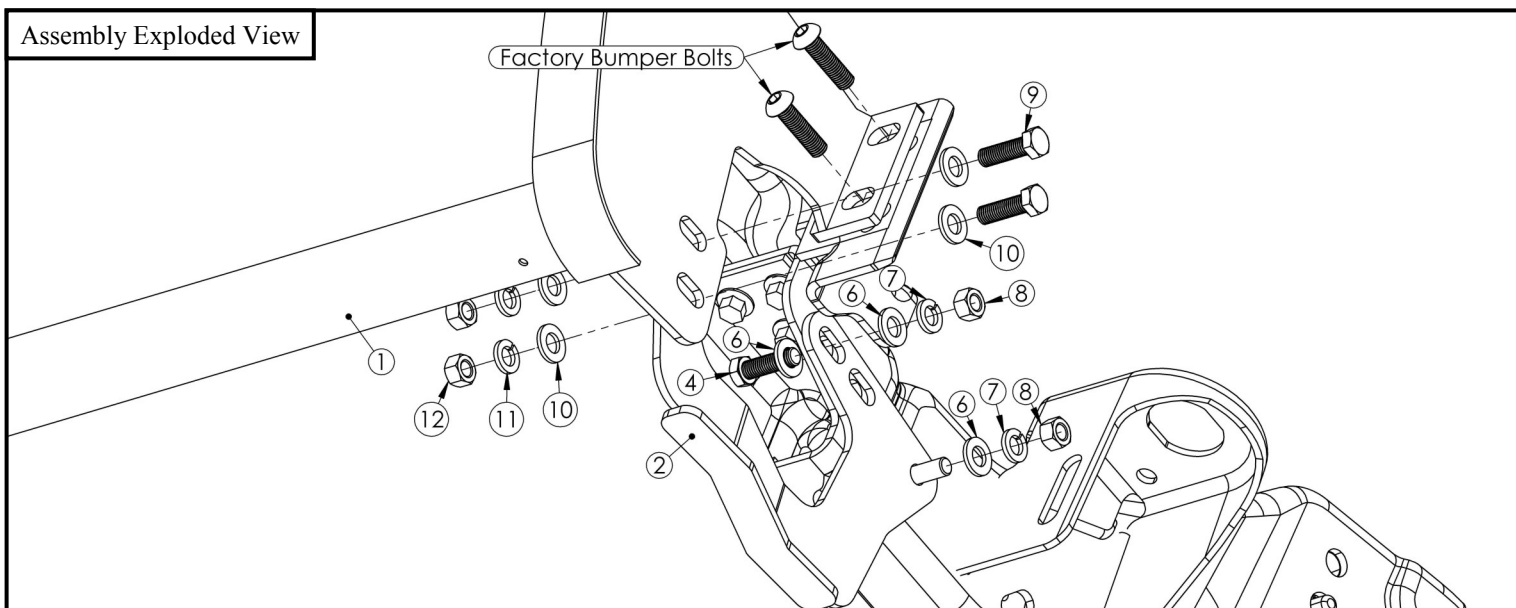


Westin Automotive Products, Inc.  
 320 W. Covina Blvd  
 San Dimas, Ca. 91773

Thank you for choosing Westin products  
 for additional installation assistance please call  
 Customer Service (800) 793-7846  
 www.westinautomotive.com

7. Align and adjust grille guard as needed and then fully tighten all hardware. Torque all M12 hardware to 55 ft-lbs, and factory hardware to factory specifications.

Assembly Exploded View



CARE INSTRUCTIONS

- REGULAR WAXING IS RECOMMENDED. DO NOT USE ANY TYPE OF POLISH OR WAX THAT MAY CONTAIN ABRASIVES.
- STAINLESS STEEL PRODUCTS CAN BE CLEANED WITH MILD SOAP AND WATER. STAINLESS STEEL POLISH SHOULD BE USED TO POLISH SMALL SCRATCHES.
- GLOSS BLACK FINISHES SHOULD BE CLEANED WITH MILD SOAP AND WATER.



Westin Automotive Products, Inc.  
320 W. Covina Blvd  
San Dimas, Ca. 91773

Thank you for choosing Westin products  
for additional installation assistance please call  
Customer Service (800) 793-7846  
[www.westinautomotive.com](http://www.westinautomotive.com)

# Westin

SIGNATURE OF QUALITY

AUTOMOTIVE PRODUCTS, INC.



## WARNING



Failure to follow these instructions could lead to death, personal injury, and / or property damage.

### FASTENERS:

All Westin supplied fasteners must be utilized and installed in accordance with the installation instructions and apply torque to the specifications as defined. **DOUBLE CHECK ALL FASTENERS BEFORE INITIAL USE, AND PERIODICALLY IN THE FUTURE TO ENSURE PROPER FUNCTION AND SAFETY.**

### DRILLING:

Most Westin products do not require drilling for installation. If drilling is defined as required, use caution when drilling a vehicle. **FAILURE TO REVIEW AN AREA TO BE DRILLED MAY RESULT IN PERSONAL INJURY AND/OR INJURY TO OTHERS AS WELL AS VEHICLE DAMAGE.**

### EYE PROTECTION:

**ALWAYS WEAR SAFETY GLASSES OR GOGGLES DURING THE INSTALLATION PROCESS TO AVOID PERSONAL INJURY.**

### MAXIMUM TOWING/CARRYING CAPACITY:

The Westin Receiver Hitches will have a visible tow rating label affixed directly on the product. User should never exceed the vehicle manufacturers maximum tow and weight rating regardless of the capacity of the hitch. **FAILURE TO FOLLOW THESE GUIDELINES WILL VOID THE WESTIN WARRANTY AND MAY RESULT IN PERSONAL INJURY AND/OR INJURY TO OTHERS AS WELL AS VEHICLE DAMAGE.**

**Westin**  
SIGNATURE OF QUALITY

Westin Automotive Products, Inc.  
320 W. Covina Blvd  
San Dimas, Ca. 91773