



# INSTRUCTIONS—INSTRUCCIONES—CONSIGNES

APPLICATION: 2011 JEEP GRAND CHEROKEE/DODGE DURANGO

APP PART # 27-1975

RUNNING BOARD

AUTOMOTIVE PRODUCTS, INC.

ITEM	QUANTITY	DESCRIPTION	TOOLS NEEDED
1	2	RUNNING BOARDS	16MM SOCKET
2,3	2	FRONT MOUNTING BRACKETS	13MM SOCKET
3,4	2	REAR MOUNTIONG BRACKETS	ALLEN TOOL (INCLUDED)
5	8	M8 HEX HEAD BOLTS	TORQUE WRENCH
6	16	M8 FLAT WASHERS	1/2" SOCKET
7	8	M8 INTERNAL TOOTH LOCK WASHERS	
8	8	M8 HEX NUTS	
9	2	3/8" J BOLTS	
10	2	M10 HEX HEAD BOLTS	
11	4	LARGE FLAT WASHERS	
12	4	SPLIT LOCK WASHERS	
13	2	3/8" HEX NUTS	
14	8	5/16" SQUARE HEAD BOLT	
15	8	5/16" FLAT WASHERS	
16	8	5/16" NYLOCK NUTS	

1. Remove contents from box and check for damage. Verify that all parts listed above are present. Carefully read all installation instructions before installing.
2. Starting from the front drivers side of the vehicle Install J-Bolt in the large hole in the frame . (fig 1, 2)  
**Note: The Jeep Grand Cherokee requires pinch weld holes used for installation to be drilled out to 3/8". Dodge Durango requires pinch weld holes used for installation to be drilled out to 3/8" and one additional hole to be drilled through the pinch weld in the rear of the vehicle. (FIG 6)**
3. Install front bracket to the J-Bolt using (1) large flat washer, (1) large split lock washer and (1) 3/8" hex nut. Secure the front bracket to the outside of the pinch weld using (2) M8 hex head bolts, (4) M8 flat washers, (2) M8 internal tooth lock washers and (2) M8 hex nuts. Do not tighten fully at this time. (fig 3,4)
4. Remove the M10 fuel tank strap bolt and install the rear bracket using (1) M10 hex head bolt, (1) large flat washer and (1) split lock washer. Secure the rear bracket to the outside of the pinch weld using (2) M8 hex head bolts, (4) M8 flat washers, (2) M8 internal tooth lock washers and (2) M8 hex nuts. Do not tighten fully at this time. (FIG 5,6)
5. Take the drivers side running board and slide (4) 5/16" square head bolts into the grooves in the bottom of the running boards. Align the square head bolts to the holes in the mounting brackets and attach using (4) 5/16" flat washers, and (4) 5/16" nylock nuts. Do not fully tighten at this time.
6. Repeat steps 2-5 for the passenger side.
7. Tighten all fasteners at this time. Torque all M10 fasteners to 35-40 ft lbs, and M8 to 30-35 ft lbs, 5/16" to 25 ft lbs, and 3/8" fasteners to 35-30 ft lbs

## CARE INSTRUCTIONS

- REGULAR WAXING IS RECOMMENDED. DO NOT USE ANY TYPE OF POLISH OR WAX THAT MAY CONTAIN ABRASIVES
- STAINLESS STEEL PRODUCTS CAN BE CLEANED WITH MILD SOAP AND WATER. STAINLESS STEEL POLISH SHOULD BE USED TO POLISH SMALL SCRATCHES.
- GLOSS BLACK FINISHES SHOULD BE CLEANED WITH MILD SOAP AND WATER



Westing Automotive Products, Inc.  
5200 N. Irwindale Ave. Suite 220  
Irwindale, Ca. 91706

Thank You for choosing Westin products  
For Additional installation assistance please call  
Customer service (800) 793-7846  
[www.westinautomotive.com](http://www.westinautomotive.com)

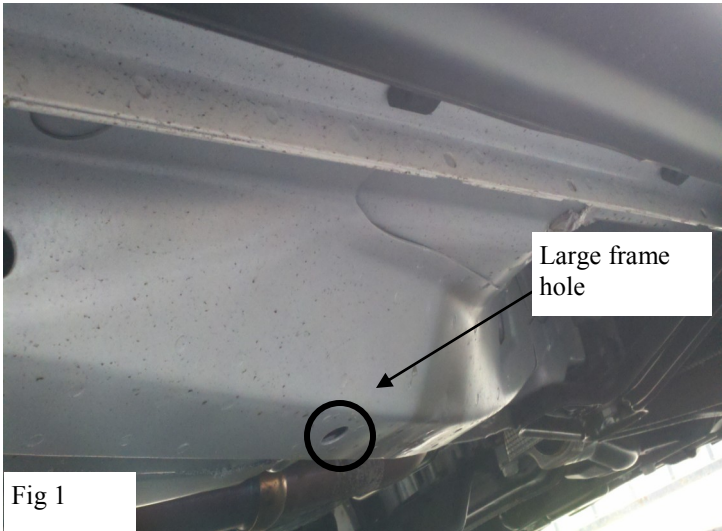


Fig 1

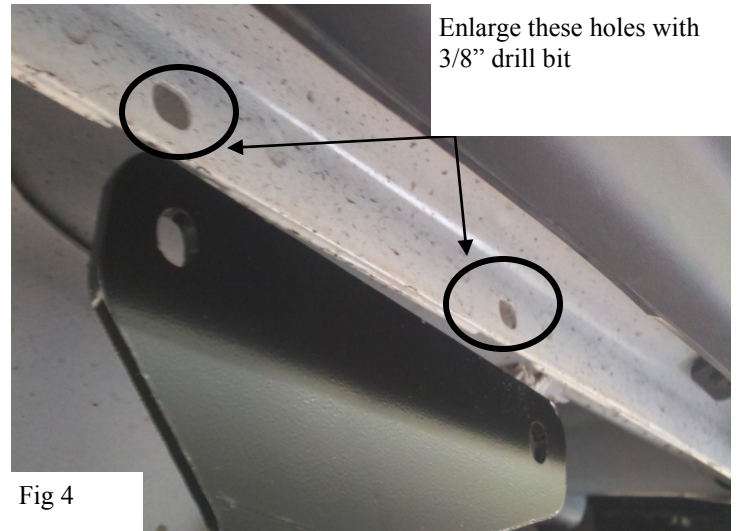


Fig 4

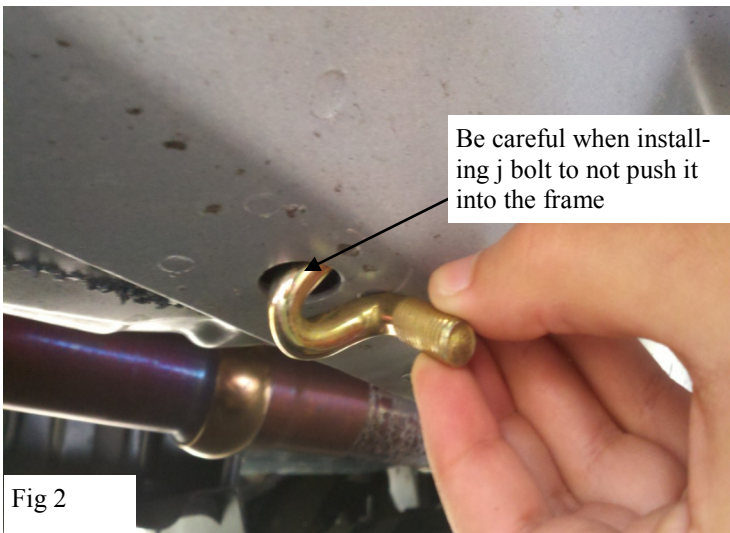


Fig 2



Fig 5



Fig 3

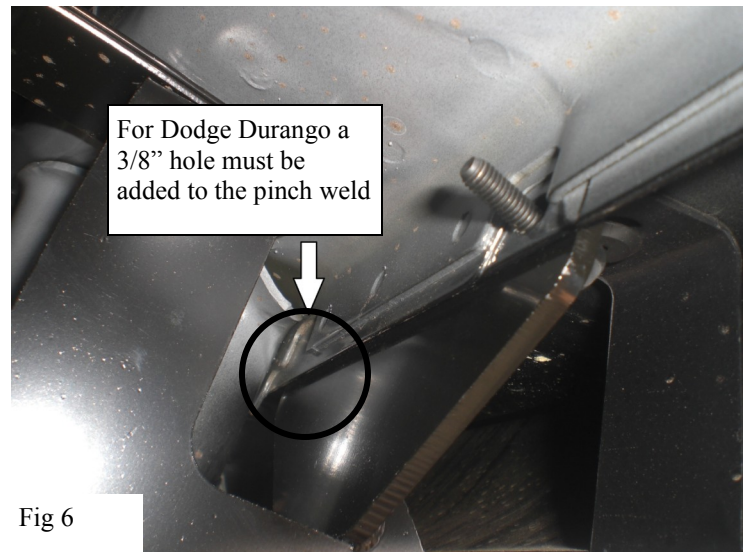


Fig 6



Westing Automotive Products, Inc.  
5200 N. Irwindale Ave. Suite 220  
Irwindale, Ca. 91706

11/30/2011 P.N.: 75-0038-RevB w11-0999

PG-2

Thank You for choosing Westin products  
For Additional installation assistance please call  
Customer service (800) 793-7846  
[www.westinautomotive.com](http://www.westinautomotive.com)



Westing Automotive Products, Inc.  
5200 N. Irwindale Ave. Suite 220  
Irwindale, Ca. 91706

11/30/2011 P.N.: 75-0038-RevB w11-0999

PG-3

Thank You for choosing Westin products  
For Additional installation assistance please call  
Customer service (800) 793-7846  
[www.westinautomotive.com](http://www.westinautomotive.com)