



# WESTIN<sup>®</sup>

PUBLIC SAFETY



CHEVROLET  
TAHOE PPV



## PUSH BUMPER ELITE

- » Heavy duty 4 gauge steel uprights
- » Interchangeable Light Channel (sold separately)
- » Wider 2-3/4" rubber strips
- » Pre-drilled for side-mounting LED lights
- » Pre-drilled to add Elite Wing Wraps (sold separately)
- » Lower tube for extra protection and strength
- » Pre-drilled to add PIT Bars (sold separately)

**FINISH:** E-Coated / Black Powder Coat  
**LIGHT CHANNEL:** Sold Separately  
**MATERIAL:** HRPO Steel  
**WARRANTY:** 3 Year



## PIT BAR ELITE

- » Push Bumper Elite Required (sold separately)
- » Fully welded mounting brackets for maximum strength
- » Dual 2-3/4" wide rubber strips match the Push Bumper Elite and provide vehicle protection
- » Bolts directly to Push Bumper Elite
- » Design for implementing PIT maneuvers
- » Plastic end caps for a clean finished look
- » Heavy Duty reinforcing brackets
- » Bolts on to Push Bumper
- » Black powder coated steel bars
- » U.S. PATENT: US D755,094 S

**FINISH:** E-COATED / Black Powder Coat  
**MATERIAL:** 7 Gauge HRPO Steel  
**VISIBLE HARDWARE:** Black Plated Stainless Steel  
**WARRANTY:** 3 Year



## WING WRAP ELITE

- » Vehicle specific contour design provides the best overall look and fit
- » Vertical 1-1/2" diameter support bar absorbs the impact in the event of a collision
- » Push Bumper EliteXD Required (sold separately)
- » 1-1/2" diameter mild steel tube
- » PIT Bar EliteXD Required (sold separately)
- » Bolts directly to pre-drilled Push Bumper Elite\* and PIT Bar Elite\* into a one-piece assembly (\*required & sold separately)

**FINISH:** E-COATED / Black Powder Coat  
**MATERIAL:** 14 Gauge HRPO Steel  
**VISIBLE HARDWARE:** Black Plated Stainless Steel  
**WARRANTY:** 3 Year



## LIGHT CHANNELS

- » Made of 14 gauge HRO steel
- » For use with Push Bumper Elite and Elite XD
- » Available in Solid (no light openings), 2 Light, 3 Light, and 4 Light option\*
- » Available to accommodate Whelen, Code 3, and Federal Signal lights
- \* 3 light option available for Code 3 "Chase" lights only.

**FINISH:** E-COATED / Black Powder Coat  
**MATERIAL:** 14 Gauge HRPO Steel  
**VISIBLE HARDWARE:** Black Plated Stainless Steel  
**WARRANTY:** 3 Year



## MODULAR FRONT PARTITION

- » 18 gauge 1.5" tubular frame
- » 16 gauge powder coated steel
- » Recessed foot wells included
- » Tamper proof hardware used on all exposed hardware in prisoner area
- » Anti-glare/scratch resistant windows
- » 10 gauge upper mounting brackets
- » Recessed and flat panels included
- » Quick and easy install - no drilling or cutting required
- » Patent D944699

**FINISH:** Black Powder Coat  
**MATERIAL:** Cold Roll Steel  
**WARRANTY:** 3 Year



## REAR PARTITION

- » Punch plate designed for maximum visibility
- » Sturdy no rattle, no squeak design
- » Conforms to headliner for minimal gap
- » Gusseted for additional rigidity and strength
- » Mounts to factory bolts, no drilling or cutting required\*
- » Poly window available - sold separately
- » Compatible with Defender Electronics Box (sold separately)
- \*Most applications

**FINISH:** Black Powder Coat  
**MATERIAL:** Steel  
**WARRANTY:** 3 Year



### POLY REAR PARTITION

- » Sturdy no rattle, no squeak design
- » Conforms to headliner for minimal gap
- » 1/4" polycarbonate window
- » Impact and shatter resistant
- » Gusseted for additional rigidity and strength
- » Mounts for factory bolts, some drilling required
- » Patent D944699
- » *\*Most applications*

FINISH: Black Powder Coat  
MATERIAL: Steel  
WARRANTY: 3 Year



### MODULAR SINGLE CELL

- » Quick & easy install with no drilling required
- » All hardware is black coated stainless steel
- » Polycarbonate window
- » Anti scratch 1/4" window
- » 16 gauge tubular powder coated steel

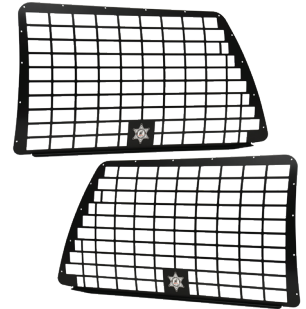
FINISH: Black Powder Coat  
MATERIAL: Steel  
WARRANTY: 3 Year



### DOOR COVER PANELS

- » Door cover protection for rear passenger and driver side doors
- » Easily installs over existing OEM door panel
- » Quick installation\*
- » Made from strong ABS material
- » Sold in sets of (2)
- » \*Drilling required

FINISH: Black  
MATERIAL: ABS  
WARRANTY: Limited Lifetime



### SIDE WINDOW GUARDS

- » Creates a secure, confined passenger compartment
- » Constructed with high strength steel
- » Punched rectangular design provides maximum visibility and full window protection
- » Designed for quick and easy installation\*
- » Black powder coat finish
- » \*Drilling required

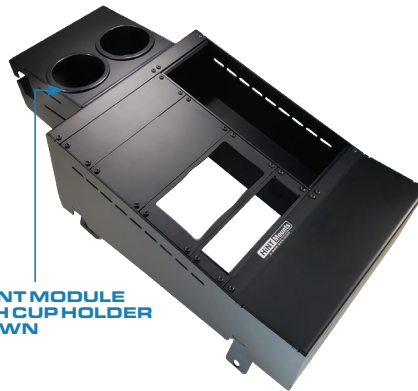
FINISH: Black Powder Coat  
MATERIAL: Steel  
WARRANTY: 3 Year



### PRISONER SEATS

- » Made from strong ABS material
- » Includes Defender Ready Buckle Seat Belt System
- » Easy installation
- » Quicker suspect loading due to increased room
- » Quicker, safer and more thorough biohazard cleanup
- » Flat, crevice-free surface eliminates need to search for dangerous contraband or missing evidence
- » Formed to fit vehicle contours

FINISH: Black  
MATERIAL: ABS  
WARRANTY: Limited Lifetime



FRONT MODULE WITH CUP HOLDER SHOWN

### CONSOLES

- » Low ergonomic design to maximize space inside the vehicle
- » Front mounting area for cup holders or storage tray
- » Inclined equipment opening 14" opening to mount equipment
- » Heavy duty 1/8" steel designed to support computer mounts
- » Mounts directly to floor
- » Black powder coat finish
- » \*Front Module P/N 800-0020 (sold separately)
- » \*Faceplates (sold separately)



### UNIBASE LAPTOP MOUNT

- » Adjustable mounting feet
- » Mounting plate bolts directly to the console
- » Double arm with G.R.I.P. Tilt/Swivel Articulation places laptop in optimum position
- » Pivoting 1" solid shafts
- » Two 360° pivoting points
- » Telescoping 1" x 10" solid steel post and 1.25" x 7" sq. steel post
- » "T" knob and "L" handle provide infinite adjustment
- » Hosts all brands of docking stations with adapter plate (not included)



# CHEVROLET

## TAHOE PPV

PRODUCTS	YEAR RANGE		PART NUMBER	FOOTNOTES
Push Bumper Elite	2021	2025	36-4045	Will Interfere With Parking Sensor If Equipped. Requires Minor Trimming. May Require Parking Sensors To Be Permanently Disabled By An Authorized GM Service Technician If Equipped.
Pit Bar Elite	2021	2025	36-4045PB	Requires Drilling Of The Bumper And/Or Valance.
Wing Wrap Elite	2021	2025	36-4045W	-
Modular Front Partition	2021	2025	35-10095	-
Modular Single Cell	2021	2025	35-210095	-
Rear Partition	2021	2025	35-12065	-
Poly Rear Partition	2021	2025	35-220652	-
Rear Partition Poly Window	2021	2025	35-120652	-
Side Window Guards	2021	2025	35-16065	Requires Drilling
Door Cover Panels	2021	2025	35-15065	Requires Drilling
Prisoner Seats	2021	2025	35-14065	Requires Drilling

CONSOLES	YEAR RANGE		PART NUMBER	DESCRIPTION
Console	2021	2025	800-0017	14"(W) console w/ 9x13" Opening. Includes (1) 4x12" Side Storage Box, Faceplates (sold separately)
Console Front Module	2021	2025	800-0020	Includes: (2) Cup Holders, Relocation Cutout for USB Ports, & Side Slotted Mounting Surfaces

MOUNTS	YEAR RANGE		PART NUMBER	DESCRIPTION
Unibase Laptop Mount	2021	2025	500-0050	12" Post w/ Double Arm & 500-0069 (AP-UNIV) on Under the Seat Base
Tablet & Keyboard Mount	2021	2025	500-0033	12" Tablet Post w/ 500-0004 (UDB-01); 10" Keyboard Post & Adjustable Tray for 12" Keyboard; Mid-Section on Under the Seat Base

LIGHT CHANNELS	SOLID	2 LIGHT	4 LIGHT	2 LIGHT	4 LIGHT	2 LIGHT	4 LIGHT
Manufacturer	No Light	SoundOff Signal nForce		Soundoff Mpower HD		Code 3 Chase	
Number of Lights	Solid	2 Light	4 Light	2 Light	4 Light	2 Light	4 Light
Part Number	36-6015	36-6015S2	36-6015S4	36-6015SMP2	36-6015SMP4	36-6015C2CH	36-6015C4CH

LIGHT CHANNELS	2 LIGHT	4 LIGHT	2 LIGHT	4 LIGHT	2 LIGHT	4 LIGHT
Manufacturer	Code 3 MR6		Federal Signal Micro Pulse6		Whelen ION-Series	
Number of Lights	2 Light	4 Light	2 Light	4 Light	2 Light	4 Light
Part Number	36-6015SMP2	36-6015SMP4	36-6015F2MP	36-6015F4MP	36-6015W2	36-6015W4

011625



For California Residents Only-Prop. 65 Warning  
 WARNING: Some products may contain chemicals such as DEHP, which can cause cancer, birth defects or other reproductive harm. For more info go to [www.p65warnings.ca.gov](http://www.p65warnings.ca.gov)

SEARCH #WESTINPUBLICSAFETY  
 & STAY CONNECTED!



CALL FOR MORE INFO:  
 800-345-8476

320 W. COVINA BLVD.  
 SAN DIMAS, CA 91773  
 WESTINPUBLICSAFETY.COM