



WESTIN[®]

PUBLIC SAFETY



DODGE
DURANGO PURSUIT

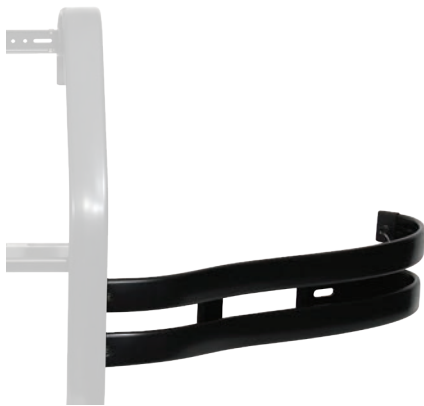


PUSH BUMPER ELITE

Westin's Public Safety Push Bumper Elite is made of heavy duty HRPO steel with 4 gauge uprights featuring 2-3/4" wide rubber strips. The Push Bumper Elite is designed with maximum safety features and options in mind. It offers customization for your agency's specific needs and provides the best in strength, durability, and protection. Choose a Light Channel to complete your Push Bumper Elite front-end protection unit, available in solid (no light openings), 2, 3 or 4 Light options. Westin's Push Bumper Elite is US patent pending.

- » Heavy duty 4 gauge steel uprights
- » Interchangeable Light Channel (sold separately)
- » Wider 2-3/4" rubber strips
- » Pre-drilled for side-mounting LED lights
- » Pre-drilled to add Elite Wing Wraps (sold separately)
- » Lower tube for extra protection and strength
- » Pre-drilled to add PIT Bars (sold separately)

FINISH: E-Coated / Black Powder Coat
LIGHT CHANNEL: Sold Separately
MATERIAL: HRPO Steel
WARRANTY: 3 Year



PIT BAR ELITE

- » Push Bumper Elite Required (sold separately)
- » Fully welded mounting brackets for maximum strength
- » Dual 2-3/4" wide rubber strips match the Push Bumper Elite and provide vehicle protection
- » Bolts directly to Push Bumper Elite
- » Design for implementing PIT maneuvers
- » Plastic end caps for a clean finished look
- » Heavy Duty reinforcing brackets
- » Bolts on to Push Bumper
- » Black powder coated steel bars
- » U.S. PATENT: US D755,094 S

FINISH: E-COATED / Black Powder Coat
MATERIAL: 7 Gauge HRPO Steel
VISIBLE HARDWARE: Black Plated Stainless Steel
WARRANTY: 3 Year



WING WRAP ELITE

- » Vehicle specific contour design provides the best overall look and fit
- » Vertical 1-1/2" diameter support bar absorbs the impact in the event of a collision
- » Push Bumper EliteXD Required (sold separately)
- » 1-1/2" diameter mild steel tube
- » PIT Bar EliteXD Required (sold separately)
- » Bolts directly to pre-drilled Push Bumper Elite* and PIT Bar Elite* into a one-piece assembly (*required & sold separately)

FINISH: E-COATED / Black Powder Coat
MATERIAL: 14 Gauge HRPO Steel
VISIBLE HARDWARE: Black Plated Stainless Steel
WARRANTY: 3 Year



LIGHT CHANNELS

- » Made of 14 gauge HRO steel
- » For use with Push Bumper Elite and Elite XD
- » Available in Solid (no light openings), 2 Light, 3 Light, and 4 Light option*
- » Available to accommodate Whelen, Code 3, and Federal Signal lights
- * 3 light option available for Code 3 "Chase" lights only.

FINISH: E-COATED / Black Powder Coat
MATERIAL: 14 Gauge HRPO Steel
VISIBLE HARDWARE: Black Plated Stainless Steel
WARRANTY: 3 Year

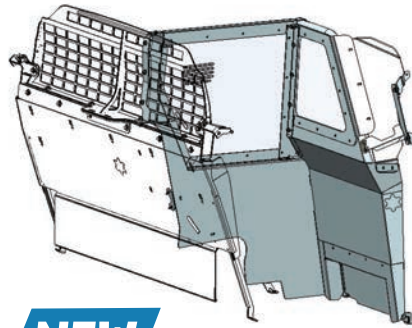


NEW

MODULAR FRONT PARTITION

- » 18 gauge 1.5" tubular frame
- » 16 gauge powder coated steel
- » Ships Parcel Post – lower cost than freight!
- » Recessed foot wells included
- » Tamper proof hardware used on all exposed hardware in prisoner area
- » Anti-glare/scratch resistant windows
- » 10 gauge upper mounting brackets
- » Recessed and flat panels included
- » Quick and easy install - no drilling or cutting required
- » Patent Pending

FINISH: Black Powder Coat
MATERIAL: Cold Roll Steel
WARRANTY: 3 Year

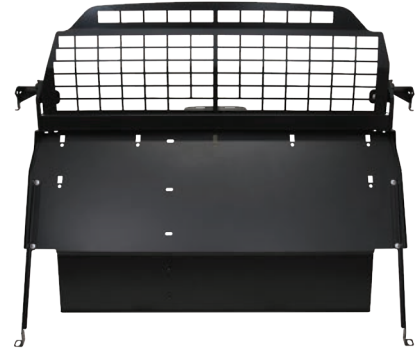


NEW

MODULAR SINGLE CELL PARTITION

- » Quick & easy install with no drilling required
- » All hardware is black coated stainless steel
- » Polycarbonate window
- » Anti scratch ¼" window
- » 16 gauge tubular powder coated steel

FINISH: Black Powder Coat
MATERIAL: Steel
WARRANTY: 3 Year



REAR PARTITION

- » Punch plate designed for maximum visibility
- » Sturdy no rattle, no squeak design
- » Conforms to headliner for minimal gap
- » Gusseted for additional rigidity and strength
- » Mounts to factory bolts, no drilling or cutting required
- » Poly window available - sold separately
- » Compatible with Defender Electronics Box (sold separately)

FINISH: Black Powder Coat
MATERIAL: Steel
WARRANTY: 3 Year



DOOR COVER PANELS

- » Door cover protection for rear passenger and driver side doors
- » Easily installs over existing OEM door panel
- » Quick installation*
- » Made from strong ABS material
- » Sold in sets of (2)
- *Drilling required

FINISH: Black
MATERIAL: ABS
WARRANTY: Limited Lifetime



PRISONER SEATS

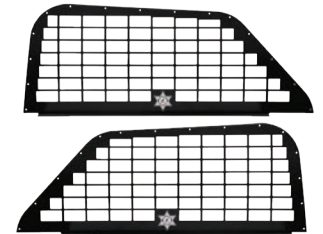
- » Made from strong ABS material
- » Includes Defender Ready Buckle Seat Belt System
- » Easy installation
- » Quicker suspect loading due to increased room
- » Quicker, safer and more thorough biohazard cleanup
- » Flat, crevice-free surface eliminates need to search for dangerous contraband or missing evidence
- » Formed to fit vehicle contours

FINISH: Black
MATERIAL: ABS
WARRANTY: Limited Lifetime



UNIBASE LAPTOP MOUNT

- » Adjustable mounting feet
- » Mounting plate bolts directly to the console
- » Double arm with G.R.I.P. Tilt/Swivel Articulation places laptop in optimum position
- » Pivoting 1" solid shafts
- » Two 360° pivoting points
- » Telescoping 1" x 10" solid steel post and 1.25" x 7" sq. steel post
- » "T" knob and "L" handle provide infinite adjustment
- » Hosts all brands of docking stations with adapter plate (not included)



SIDE WINDOW GUARDS

- » Creates a secure, confined passenger compartment
- » Constructed with high strength steel
- » Punched rectangular design provides maximum visibility and full window protection
- » Designed for quick and easy installation*
- » Black powder coat finish
- *Drilling required

FINISH: Black Powder Coat
MATERIAL: Steel
WARRANTY: 3 Year

PRODUCTS	MODEL	YEAR	RANGE	PART NUMBER	FOOTNOTES
Push Bumper Elite	Durango Pursuit	2021	2025	36-4075	Requires Minor Trimming. Requires Drilling of the bumper and/or valance. Light channel required, (sold separately).
Pit Bar Elite	Durango Pursuit	2021	2025	36-4075PB	PIT Bar Elite and Wing Wraps (sold separately).
Wing Wrap Elite	Durango Pursuit	2021	2025	36-4075W	Push Bumper and PIT Bar required (sold separately).
Modular Front Partition	Durango Pursuit	2021	2025	35-10075	-
Modular Single Cell	Durango Pursuit	2021	2025	35-220755	Use with full Prisoner Seat P/N 35-14075
Modular Single Cell	Durango Pursuit	2021	2025	35-220765	Use with OE or Single Prisoner Seat
Driver Side Modular Front Partition	Durango Pursuit	2021	2025	35-10075-D	Requires Modular Single Cell
Rear Partition	Durango Pursuit	2021	2025	35-12075	-
Side Window Guards	Durango Pursuit	2021	2025	35-16075	-
Door Cover Panels	Durango Pursuit	2021	2025	35-15075	-
Prisoner Seat	Durango Pursuit	2021	2025	35-14075	-

MOUNTS	YEAR RANGE	PART NUMBER	DESCRIPTION
Unibase Laptop Mount	2011 2025	500-0022	12" Post w/ Double Arm & 500-0069 (AP-UNIV) on Under the Seat Base
Tablet & Keyboard Mount	2011 2025	500-0013	12" Tablet Post w/ 500-0004 (UDB-01); 10" Keyboard Post & Adjustable Tray for 12" Keyboard; Mid-Section on Under the Seat Base

LIGHT CHANNELS	SOLID	2 LIGHT	4 LIGHT	2 LIGHT	4 LIGHT	2 LIGHT	3 LIGHT
Manufacturer	No Light	SoundOff Signal nForce		Soundoff Mpower HD		Code 3 Chase	
Number of Lights	Solid	2 Light	4 Light	2 Light	4 Light	2 Light	3 Light
Part Number	36-6005	36-6005S2	36-6005S4	36-6005SMP2	36-6005SMP4	36-6005C2CH	36-6005C3CH

LIGHT CHANNELS	2 LIGHT	4 LIGHT	2 LIGHT	4 LIGHT	2 LIGHT	4 LIGHT
Manufacturer	Code 3 MR6		Federal Signal Micro Pulse6		Whelen ION-Series	
Number of Lights	2 Light	4 Light	2 Light	4 Light	2 Light	4 Light
Part Number	36-6005SMP2	36-6005SMP4	36-6005F2MP	36-6005F4MP	36-6005W2	36-6005W4

012125



For California Residents Only-Prop. 65 Warning
 WARNING: Some products may contain chemicals such as DEHP, which can cause cancer, birth defects or other reproductive harm. For more info go to www.p65warnings.ca.gov

**SEARCH #WESTINPUBLICSAFETY
& STAY CONNECTED!**



**CALL FOR MORE INFO:
800-345-8476**

**320 W. COVINA BLVD.
SAN DIMAS, CA 91773
WESTINPUBLICSAFETY.COM**